

FIGURE I. EDO ATTACHMENT GEAR MODEL 696-12 FOR EDO 696-3500 FLOATS ON CESSNA 185

RELEASED: MAY, 1981

TABLE 1. EDO ATTACHMENT GEAR INSTALLATION MODEL 696-12 FOR CESSNA 185 ON 696-3500 FLOATS
KEY TO FIGURE 1.

REF NO.	QTY. PER			PART NUMBER	PART NAME	REF NO.	QTY. PER			PART NUMBER	PART NAME
	FLT.	ASY.	UNT.				FLT.	ASY.	UNT.		
1	-	1	-	696-1210-11	Strut-Fwd., L.H.	35	-	1	-	16792	Cover Plate, L.H.
2	-	1	-	696-1210-12	Strut-Fwd., R.H.	36	-	1	-	16793	Cover Plate, R.H.
3	1	2	-	696-1211	Strut-Diag.	37	1	2	-	16794	Gasket, Cover
4	-	1	-	696-1212-11	Strut-Aft, L.H.	38	1	2	-	46063	Spray Rail Assy.
5	-	1	-	696-1212-12	Strut-Aft, R.H.	38-1	-	-	1	46064	Spray Strip
6	1	2	-	38-3013	Spreader Assy.	38-2	-	-	5	46065	Clip
7	1	2	-	3395-9875	Tierod Assy, Spreader	38-3	-	-	25	MS20470AD5-6	Rivet
7-1	-	-	1	AN665-61L	Terminal, L.H.	38-4	-	-	25	MS20470AD5-8	Rivet
7-2	-	-	1	AN665-61R	Terminal, R.H.	39	1	2	-	37706	Step Assy-Fwd. Strut
7-3	-	-	2	AN396-19	Pin, Flathead	39-1	-	-	1	37706-2	Brace
7-4	-	-	2	AN381-3-12	Cotter Pin	39-2	-	-	1	37706-3	Tube
7-5	-	-	1	AN316-5L	Checknut, L.H.	39-3	-	-	1	37706-1	Cap
7-6	-	-	1	AN316-5R	Checknut, R.H.	39-4	-	-	1	AN535-10-6	Drive Screw
8	1	2	-	3397-6675	Tierod Assy, Aft	40	2	4	-	AN24-31A	Bolt
8-1	-	-	1	AN665-80LA	Terminal, L.H.	41	2	4	-	AN960PD416	Washer
8-2	-	-	1	AN665-80RA	Terminal, R.H.	42	2	4	-	AN364-428	Nut
8-3	-	-	2	AN396-21	Pin, Flathead	43	-	1	-	597-1142-1	Step Installation, L.H.
8-4	-	-	2	AN381-3-12	Cotter Pin	43-1	-	-	1	5036-9	Step
8-5	-	-	1	AN316-6L	Checknut, L.H.	43-2	-	-	1	AN4-20A	Bolt
8-6	-	-	1	AN316-6R	Checknut, R.H.	43-3	-	-	1	AN4-21A	Bolt
9	1	2	-	3397-7050	Tierod Assy., Fwd.	43-4	-	-	4	AN960PD416	Washer
				SEE ITEMS 8-1 THRU 8-6		43-5	-	-	2	AN365-428A	Nut
10	-	1	-	38947	Fitting, Fwd. Fus.,L.H.	44	-	1	-	597-1142-2	Step Installation, R.H.
11	-	1	-	38948	Fitting, Fwd. Fus.,R.H.	44-1	-	-	1	5036-10	Step
12	2	4	-	3107-23	Eyebolt					SEE ITEMS 43-2 THRU 43-5	
13	4	8	-	AN960PD716	Washer	45	1	2	-	48735	Step Assy.*
14	2	4	-	AN365-720	Nut	45-1	-	-	1	48736	Clamp
15	2	4	-	AN25-28A	Bolt	45-2	-	-	1	46067-2	Clamp
16	4	8	-	AN960PD516L	Washer	45-3	-	-	1	46067	Tube Assy.
17	2	4	-	AN364-524	Nut	45-4	-	-	4	33596	Filler
18	-	1	-	68394-1	Fitting, Fwd. Deck,L.H.	45-5	-	-	2	AN5-11A	Bolt
19	-	1	-	68394-2	Fitting, Fwd. Deck,R.H.	45-6	-	-	2	AN960PD516	Washer
20	6	12	-	3369	Spacer	45-7	-	-	2	AN365-524	Nut
21	1	2	-	3368-26	Wirepull, Fwd. Deck	46	-	1	-	582-1241	Faring Installation
22	1	2	-	AN27-30A	Bolt	46-1	-	-	1	37570	Faring Assy., Fwd.L.H.
23	2	4	-	AN960PD716L	Washer	46-2	-	-	1	37571	Faring Assy., Fwd.R.H.
24	2	4	-	AN364-720	Nut	46-3	-	-	1	37572	Faring Assy., Aft L.H.
25	-	1	-	36652	Fitting, Aft Fus.,L.H.	46-4	-	-	1	37573	Faring Assy., Aft R.H.
26	-	1	-	36653	Fitting, Aft Fus.,R.H.	46-5	-	-	2	37712	Clamp, Leading Edge
27	2	4	-	AN5-32A	Bolt	46-6	-	-	4	37713	Clamp, Side
28	2	4	-	AN5-12A	Bolt	46-7	-	-	2	37574	Clamp Assy., Aft
29	8	16	-	AN960PD516	Washer	46-8	-	-	10	AN526C-832R6	Screw
30	4	8	-	AN365-524	Nut	46-9	-	-	2	AN364-832	Nut
31	-	1	-	68395-1	Fitting, Aft Deck, L.H.	46-10	-	-	8	C-7000-832-C	Tinnerman Nut
32	-	1	-	68395-2	Fitting, Aft Deck, R.H.	46-11	-	-	18	AN526C-832R9	Screw
33	1	2	-	3368-28	Wirepull, Aft Deck	46-12	-	-	18	SS8K160	Rivnut
34	1	2	-	AN27-31A	Bolt						

* Part No. 48735, Step Assy. is an alternate for Items 43 & 44.

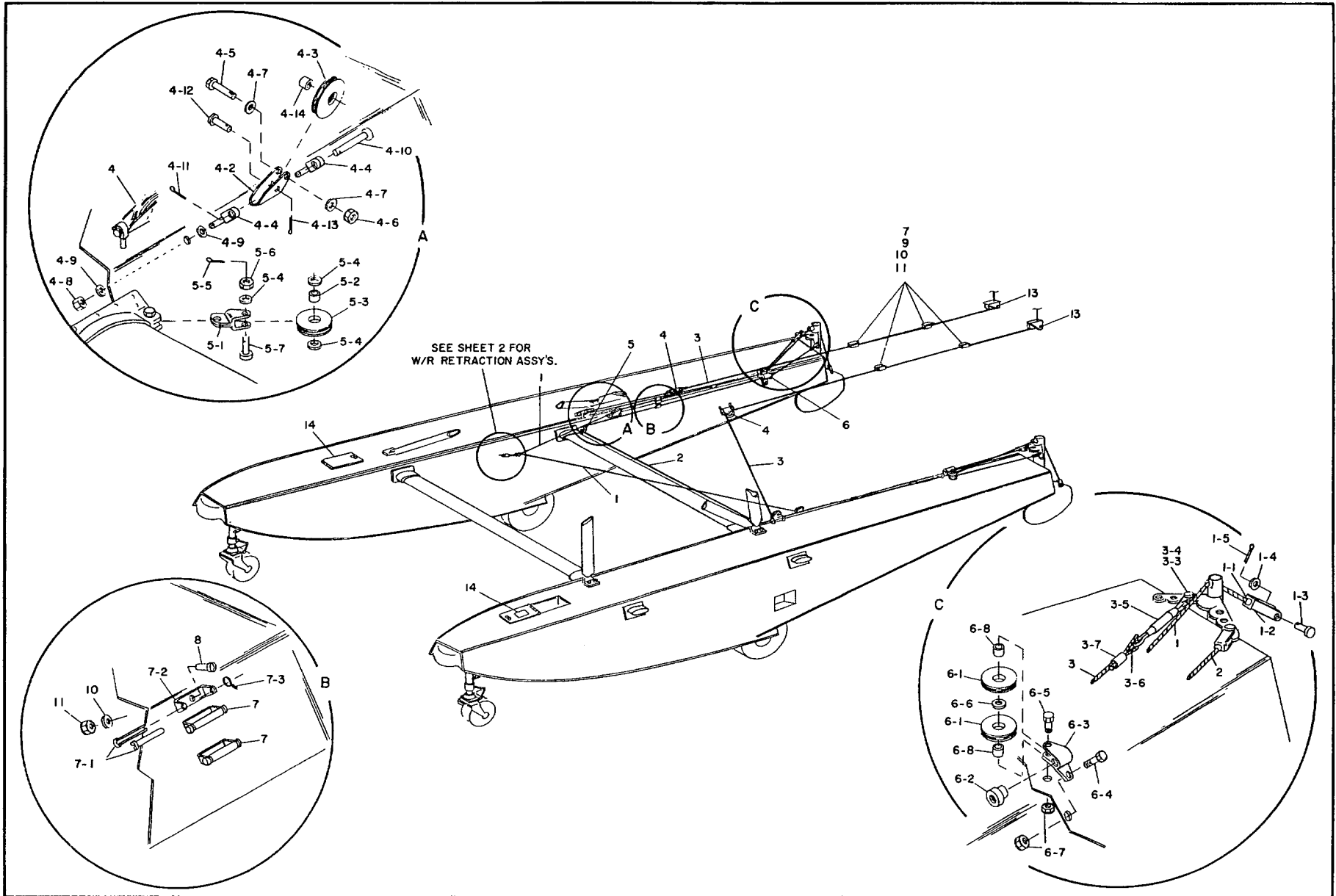
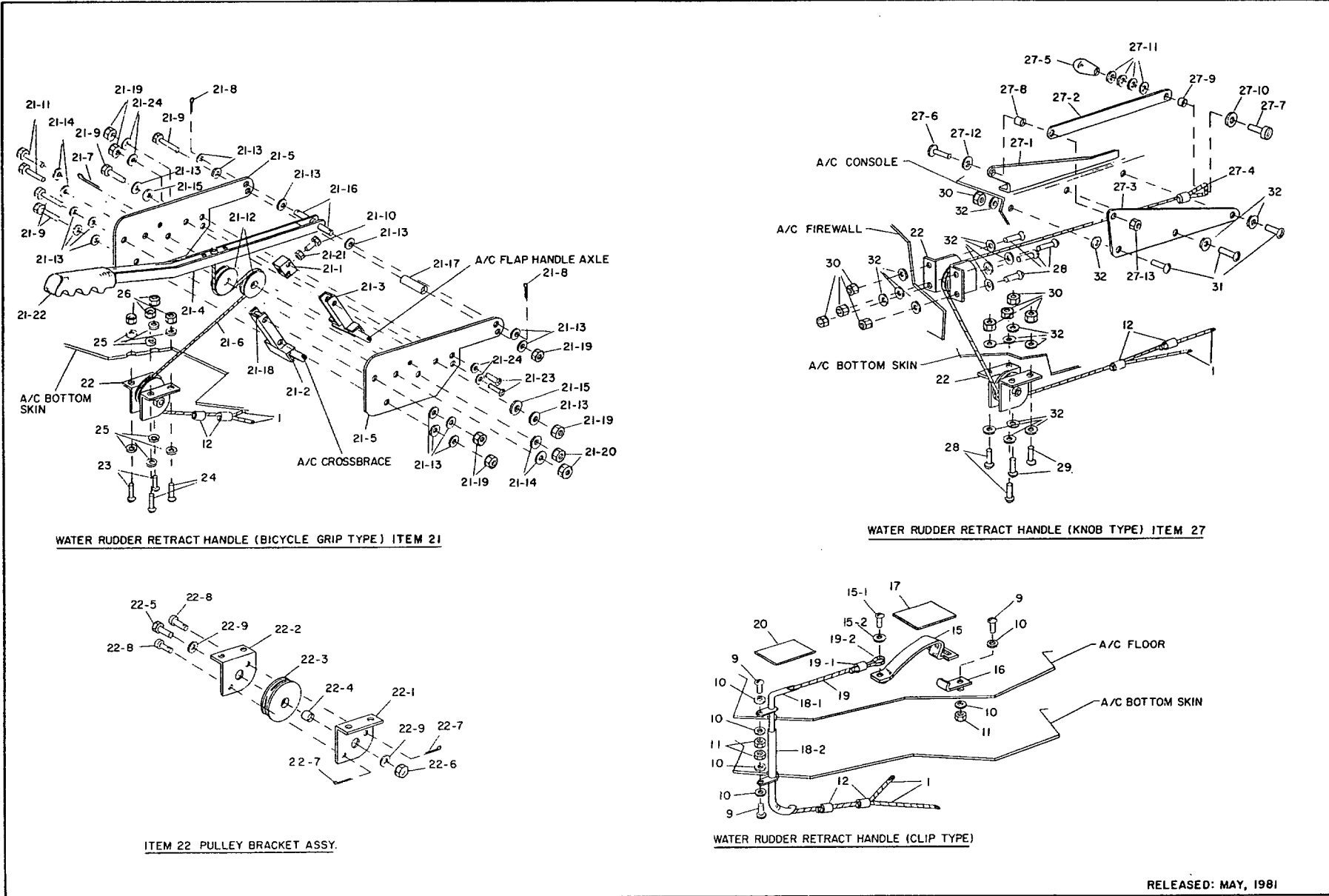


FIGURE 2. EDO WATER RUDDER CONTROLS MODEL 696-12 (SHEET 1 OF 2) FOR
EDO 696-3500 FLOATS ON CESSNA 185

RELEASED: MAY, 1981

TABLE 2. EDO WATER RUDDER CONTROLS, INSTALLATION MODEL 696-12 FOR CESSNA 185 ON 696-3500 FLOATS
KEY TO FIGURE 2.

REF NO.	QTY. PER			PART NUMBER	PART NAME	REF NO.	QTY. PER			PART NUMBER	PART NAME
	FLT.	ASY.	UNT.				FLT.	ASY.	UNT.		
1	1	2	-	3343-240.0-3355	Cable Assy., W/R Retract	5-6	-	-	1	AN310-3	Nut
1-1	-	-	1	AN664C3	Terminal, Ball End	5-7	-	-	1	AN3-6	Bolt
1-2	-	-	1	RA2500-3	Terminal	6	1	2	-	3925	D'ble Pulley & F'ld Assy
1-3	-	-	1	AN393-9	Pin, Flathead	6-1	-	-	2	0915-1	Pulley
1-4	-	-	1	AN960-10L	Washer	6-2	-	-	1	38-081	Fairlead
1-5	-	-	1	AN381-2-6	Cotter Pin	6-3	-	-	1	38-099	Housing, D'ble Pulley
2	-	1	-	3343-284.0-3353	Cable Assy., Interfloat	6-4	-	-	1	AN3-12A	Bolt
2-1	-	-	1	AN664C3	Terminal, Ball End	6-5	-	-	1	AN3-14A	Bolt
2-2	-	-	1	RA2500-3	Terminal	6-6	-	-	1	AN960D10L	Washer
2-3	-	-	1	AN393-9	Pin, Flathead	6-7	-	-	2	MS20364-1032	Nut
2-4	-	-	1	AN960-10L	Washer	6-8	-	-	2	0210	Bushing
2-5	-	-	2	AN381-2-6	Cotter Pin	7	6	12	-	68-w-654	Fairlead Assy.
2-6	-	-	1	AN393-11	Pin, Flathead	7-1	-	-	2	0494	Fairlead
2-7	-	-	1	AN130-16S	Turnbuckle	7-2	-	-	1	68-w-654-1	Bracket
2-8	-	-	1	AN100C4	Thimble, Wire Cable	7-3	-	-	A/R	AN995C41-2	Lockwire
2-9	-	-	1	28-2-G	Nicopress Sleeve	8	-	8	-	AN526-1032-10	Screw
3	1	2	-	3342-340.0-3353	Cable Assy., Control	9	-	7	-	AN526-1032-8	Screw
3-1	-	-	1	RA2500-3	Terminal	10	-	18	-	AN960PD10	Washer
3-2	-	-	1	AN664C3	Terminal, Ball End	11	-	15	-	AN365-1032	Nut
3-3	-	-	1	AN381-2-6	Cotter Pin	12	-	2	-	28-2-G	Nicopress Sleeve
3-4	-	-	1	AN393-11	Pin, Flathead	13	1	2	-	AN381-4-20	Cotter Pin
3-5	-	-	1	AN130-16S	Turnbuckle	14	1	2	-	606-1279	Placard, Baggage Compt.
3-6	-	-	1	AN100C4	Thimble, Wire Cable	15 *	-	1	-	0367	W/R Ret.Hdl.(Clip Type)
3-7	-	-	1	28-2-G	Nicopress Sleeve	15-1	-	-	1	AN525-10-8	Screw
4	3	6	-	60-W-911	Pulley Bkt. Assy.	15-2	-	-	1	AN960D10	Washer
4-1	-	-	1	60-W-911-1	Pulley Bkt. Sub-Assy.	16	-	1	-	88-WS-503	Hook
4-2	-	-	1	0209	Bracket	17	-	1	-	5029	Placard
4-3	-	-	1	0915-1	Pulley	18	-	1	-	2831	Fairlead Tube Assy.
4-4	-	-	2	00-W-850	Eyebolt	18-1	-	-	1	2832	Tube Assy., Upper
4-5	-	-	1	AN3-7A	Bolt	18-2	-	-	1	2833	Tube Assy., Lower
4-6	-	-	1	AN365-1032	Locknut	19	-	1	-	3340-70.0-3355	Cable Assy., Ret. Fwd.
4-7	-	-	2	AN960D10	Washer	19-1	-	-	1	28-2-G	Nicopress Sleeve
4-8	-	-	2	AN365-428	Locknut	19-2	-	-	1	AN100C4	Thimble, Wire Cable
4-9	-	-	2	AN960PD416	Washer	20	-	1	-	5031	Placard
4-10	-	-	1	AN394-73	Pin, Flathead	21 *	-	1	-	696-1230-1	W/R Ret.Hdl.(Byc. Grip)
4-11	-	-	1	AN381-2-8	Cotter Pin	21-1	-	-	1	696-1224	Block
4-12	-	-	1	AN393-15	Pin, Flathead	21-2	-	-	1	696-1225-2	Brace Assy.
4-13	-	-	1	AN381-2-6	Cotter Pin	21-3	-	-	1	696-1226-2	Clamp Assy.
4-14	-	-	1	0210	Bushing	21-4	-	-	1	696-1227-12	Handle
5	1	2	-	38-144	Pulley Bkt. Assy.(Single)	21-5	-	-	2	696-1231	Plate
5-1	-	-	1	38-145	Bracket Assy.	21-6	-	-	1	3354-60.0-3355	Cable Assy.
5-2	-	-	1	0210	Bushing	21-7	-	-	1	AN381-3-18	Cotter Pin
5-3	-	-	1	0915-1	Pulley	21-8	-	-	2	AN381-2-6	Cotter Pin
5-4	-	-	3	AN960-10L	Washer	21-9	-	-	4	AN3-12A	Bolt
5-5	-	-	1	AN381-2-8	Cotter Pin	21-10	-	-	1	696-1215-11	Bolt, Hex
						21-11	-	-	2	AN4-12A	Bolt



WATER RUDDER RETRACT HANDLE (BICYCLE GRIP TYPE) ITEM 21

WATER RUDDER RETRACT HANDLE (KNOB TYPE) ITEM 27

ITEM 22 PULLEY BRACKET ASSY.

WATER RUDDER RETRACT HANDLE (CLIP TYPE)

FIGURE 2. EDO WATER RUDDER CONTROLS MODEL 696-12 (SHEET 2 OF 2) FOR EDO 696-3500 FLOATS ON CESSNA 185

RELEASED: MAY, 1981

TABLE 2. EDO WATER RUDDER CONTROLS, INSTALLATION MODEL 696-12 FOR CESSNA 185 ON 696-3500 FLOATS
KEY TO FIGURE 2.

REF NO.	QTY. PER			PART NUMBER	PART NAME	REF NO.	QTY. PER			PART NUMBER	PART NAME
	FLT.	ASY.	UNT.				FLT.	ASY.	UNT.		
21-12	-	-	2	MS24566-3B	Pulley	31	-	5	-	AN526C1032R9	Screw
21-13	-	-	20	AN960-10L	Washer	32	-	22	-	AN960PD10	Washer
21-14	-	-	4	AN960PD416L	Washer						
21-15	-	-	2	AN960516L	Washer						
21-16	-	-	2	AN393-9	Pin, Flathead						
21-17	-	-	1	NAS43DD3-52	Spacer						
21-18	-	-	2	NAS43DD3-32	Spacer						
21-19	-	-	6	AN365-1032A	Nut						
21-20	-	-	2	AN365-428A	Nut						
21-21	-	-	1	MS35650-302	Nut						
21-22	-	-	1	1" Dia.	Bicycle Grip						
21-23	-	-	2	AN525-10R22	Screw						
21-24	-	-	6	AN960-10	Washer						
22	-	1	-	696-1221-1	Pulley Bkt Assy.						
22-1	-	-	1	696-1221-11-1	Pulley Bkt.						
22-2	-	-	1	696-1221-11-2	Pulley Bkt.						
22-3	-	-	1	0915	Pulley						
22-4	-	-	1	0210	Bushing						
22-5	-	-	1	AN3-7A	Bolt						
22-6	-	-	1	AN365-1032	Nut						
22-7	-	-	2	AN381-2-6	Cotter Pin						
22-8	-	-	2	AN393-15	Pin, Flathead						
22-9	-	-	2	AN960PD10	Washer						
23	-	2	-	AN526-832R6	Screw						
24	-	2	-	AN526-832R9	Screw						
25	-	8	-	AN960PD8	Washer						
26	-	4	-	AN365-832A	Nut						
27 *	-	1	-	696-1235-1	W/R Ret.Hdl.(Knob Type)						
27-1	-	-	1	696-1183-12	Ret.Hdl.Bkt.(R.H.)						
27-2	-	-	1	696-1184-1	Retract Handle						
27-3	-	-	1	696-1236-11	Plate, W/R Retract						
27-4	-	-	1	3340-72.0-3355	Cable						
27-5	-	-	1	POK-72	Knob						
27-6	-	-	1	AN525-10R10	Screw						
27-7	-	-	1	AN501D516-20	Screw						
27-8	-	-	1	AA-346-1	Bearing						
27-9	-	-	1	NAS43DD5-20	Spacer						
27-10	-	-	1	AN945-5P	Washer						
27-11	-	-	4	AN960-516	Washer						
27-12	-	-	1	AN960PD10L	Washer						
27-13	-	-	1	AN364-1032	Nut						
See Item 22	-	-	2	696-1221-1	Pulley Bracket Assy.						
28	-	6	-	AN3-4A	Bolt						
29	-	2	-	AN3-5A	Bolt						
30	-	13	-	AN365-1032	Nut						

* Use applicable P/N'S for W/R Retract Assy. Use items 15 thru 20 for "clip type", items 21 thru 26 for "bicycle type", and items 27 thru 32 for "knob type".

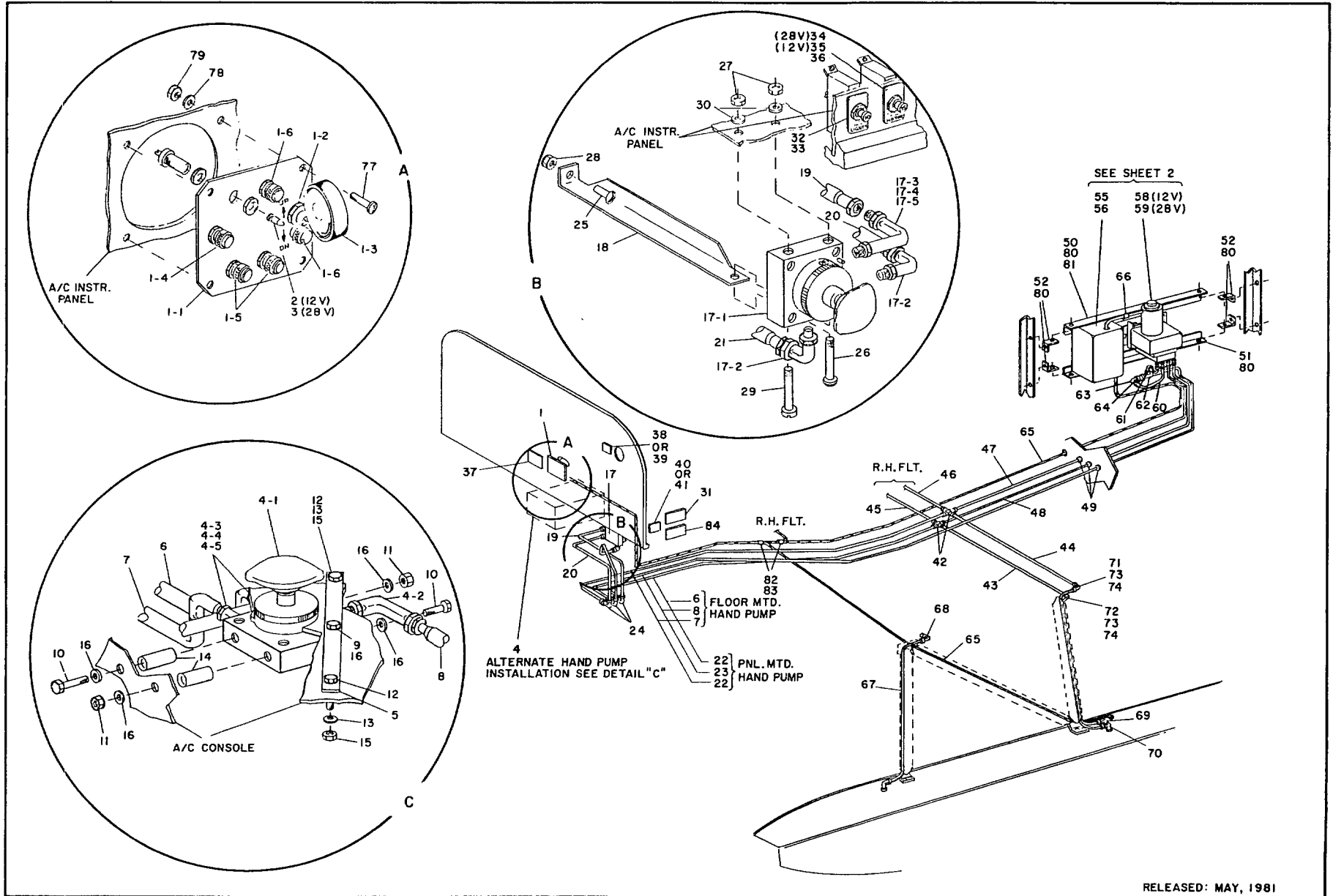
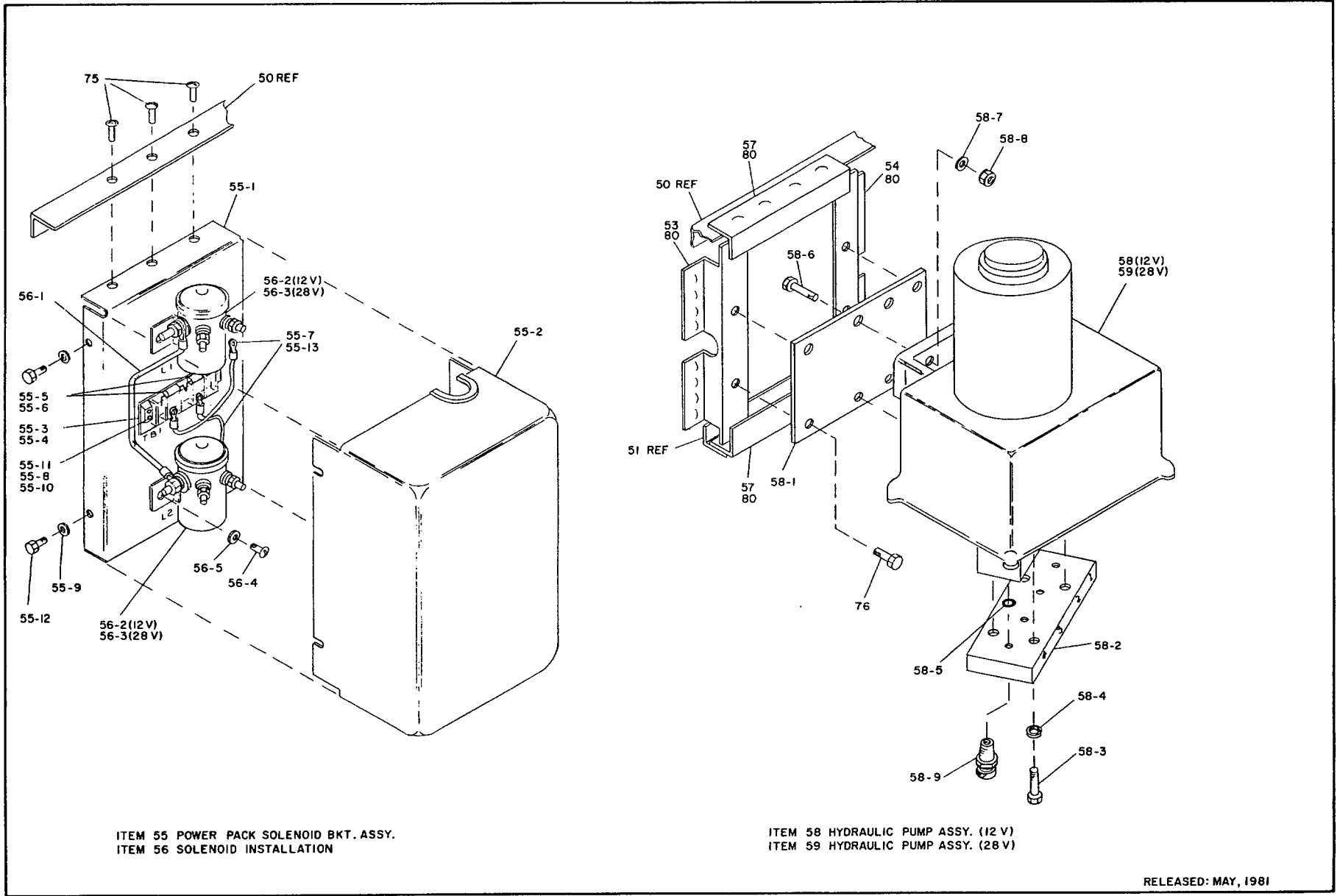


FIGURE 3. EDO ELECTRIC-HYDRAULIC POWER PACK & BRAKE INSTALLATION (SHEET 1 OF 2) FOR EDO 696-3500 AMPHIBIOUS FLOATS ON CESSNA 185 (INSTALLATION MODEL 696-12)

TABLE 3. EDO ELECTRIC-HYDRAULIC POWER PACK & BRAKE INSTL., INSTALLATION MODEL 696-12 FOR CESSNA 185 ON 696-3500 FLOATS
KEY TO FIGURE 3.

REF NO.	QTY. PER			PART NUMBER	PART NAME	REF NO.	QTY. PER			PART NUMBER	PART NAME
	FLT.	ASY.	UNT.				FLT.	ASY.	UNT.		
1	-	1	-	597-1280-1	Control Panel Assy.	20-3	-	-	3	2624	Bumper
1-1	-	-	1	597-1281	Plate, Control Panel	21	-	1	-	597-1294	Tube Assy. (Res.)
1-2	-	-	1	MS25125-E3	Switch	21-1	-	-	2	MS20819-4D	Sleeve
1-3	-	-	1	0861233-2	Knob	21-2	-	-	2	AN818-4D	Nut, Hex
1-4	-	-	1	801-1030-0331-504	Ind. Lt., Red	21-3	-	-	2	2624	Bumper
1-5	-	-	2	801-1030-0333-504	Ind. Lt., Amber	22	-	2	-	597-1295-970	Flex Hose Assy.
1-6	-	-	2	801-1030-0334-504	Ind. Lt., Blue	22-1	-	-	2	3901-04544	Coupling
2	-	5	-	330	Bulb, 12V } See Note 1	23	-	1	-	597-1295-1530	Flex Hose Assy.
3	-	5	-	327	Bulb, 28V }	23-1	-	-	2	3901-04544	Coupling
4	-	1	-	597-1265-3	Hand Pump Assy. (Flr.Mtd.)	24	-	3	-	AN821-4D	Elbow
					See Note 2	25	-	1	-	AN3-3	Bolt
4-1	-	-	1	30-0050/A-50	Hand Pump	26	-	1	-	AN4-32A	Bolt
4-2	-	-	1	C5515X4	Elbow	27	-	2	-	AN365-428	Nut
4-3	-	-	2	AN832-4D	Union	28	-	1	-	MS20365-1032	Nut
4-4	-	-	2	AN924-4D	Nut	29	-	1	-	1/2-28 x 3" Lg.	Socket Head Cap Screw
4-5	-	-	2	AN6290-4	O-Ring	30	-	2	-	AN960PD416L	Washer
5	-	1	-	696-1275	Bracket, Hand Pump	31	-	1	-	597-1274	Placard
6	-	1	-	597-1295-810	Flex Hose Assy.	32	-	1	-	109-210-101	Ckt. Bkr. (10 Amp)
6-1	-	-	2	3901-04544	Coupling	33	-	1	-	597-1264-1	Nameplate
7	-	1	-	597-1295-820	Flex Hose Assy.	34	-	1	-	109-220-101	Ckt. Bkr. 28V } (See note 1)
7-1	-	-	2	3901-04544	Coupling	35	-	1	-	109-235-101	Ckt. Bkr. 12V }
8	-	1	-	597-1295-1241	Flex Hose Assy.	36	-	1	-	597-1264	Nameplate
8-1	-	-	2	3901-04544	Coupling	37	-	1	-	696-1278	Placard, Ldg. & C.G. Lmt.
9	-	1	-	AN4-4A	Bolt	38	-	1	-	696-1276	Placard, Vne(kts) } See
10	-	2	-	AN4-35A	Bolt	39	-	1	-	696-1280	Placard, Vne(mph) } Note 4
11	-	2	-	AN364-428	Nut	40	-	1	-	696-1277	Plcd, Va & G.W. (kts) } See
12	-	2	-	AN526-832-R6	Screw	41	-	1	-	696-1281	Plcd, Va & G.W. (mph) } Note 4
13	-	6	-	AN960PD8	Washer	42	-	2	-	AN827-4D	Cross
14	-	2	-	NAS43DD4-44	Spacer	43	-	1	-	696-1272-1	Tube Assy.
15	-	2	-	C8104-832-373	Speed Nut	43-1	-	-	2	AN819-4D	Ferrule
16	-	5	-	AN960PD416L	Washer	43-2	-	-	2	AN818-4D	Nut
17	-	1	-	597-1265-1	Hand Pump Assy. (Inst.pnl)	43-3	-	-	1	2614	Bumper
					See Note 3	44	-	1	-	696-1272-2	Tube Assy.
17-1	-	-	1	30-0050/A-50	Hand Pump	44-1	-	-	2	AN819-4D	Ferrule
17-2	-	-	2	C5515X4	Elbow	44-2	-	-	2	AN818-4D	Nut
17-3	-	-	1	AN833-4D	Elbow	44-3	-	-	2	2614	Bumper
17-4	-	-	1	AN924-4D	Nut	45	-	1	-	696-1272-3	Tube Assy.
17-5	-	-	1	AN6290-4	O-Ring	45-1	-	-	2	AN819-4D	Ferrule
18	-	1	-	597-1263	Brace, Hand Pump	45-2	-	-	2	AN818-4D	Nut
19	-	1	-	597-1293-1	Tube Assy. (Dn)	46	-	1	-	696-1272-4	Tube Assy.
19-1	-	-	2	MS20819-4D	Sleeve	46-1	-	-	2	AN819-4D	Ferrule
19-2	-	-	2	AN818-4D	Nut, Hex	46-2	-	-	2	AN818-4D	Nut
19-3	-	-	3	2624	Bumper	47	-	1	-	597-1295-563	Flex Hose Assy.
20	-	1	-	597-1293-2	Tube Assy. (Up)	47-1	-	-	2	3901-04544	Coupling
20-1	-	-	2	MS20819-4D	Sleeve	48	-	1	-	597-1295-592	Flex Hose Assy.
20-2	-	-	2	AN818-4D	Nut, Hex	48-1	-	-	2	3901-04544	Coupling



RELEASED: MAY, 1981

FIGURE 3. EDO ELECTRIC-HYDRAULIC POWER PACK & BRAKE INSTALLATION (SHEET 2 OF 2) FOR EDO 696-3500 AMPHIBIOUS FLOATS ON CESSNA 185 (INSTALLATION MODEL 696-12)

TABLE 3. EDO ELECTRIC-HYDRAULIC POWER PACK & BRAKE INSTL., INSTALLATION MODEL 696-12 FOR CESSNA 185 ON 696-3500 FLOATS
KEY TO FIGURE 3.

REF NO.	QTY. PER			PART NUMBER	PART NAME	REF NO.	QTY. PER			PART NUMBER	PART NAME
	FLT.	ASY.	UNT.				FLT.	ASY.	UNT.		
49	-	3	-	MS35489-19	Grommet	62	-	1	-	AN826-4D	Tee
50	-	1	-	597-1262-1	Angle, Upper	63	-	1	-	MS20822-4D	Elbow
51	-	1	-	597-1262-2	Angle, Lower	64	-	1	-	483-1/8D-2-2	Check Valve
52	-	4	-	597-1262-4	Clip	65	-	22 ft.	-	3405	Cable
53	-	1	-	597-1267-1	Support Bracket	66	-	1	-	B4072	Butt Splice
54	-	1	-	597-1267-2	Support Bracket	67	-	2	-	2205-580-4	Tube Assy.
55	-	1	-	597-1260-1	Pwr.Pack Sol.Bkt.Assy.	67-1	-	-	2	AN819-3D	Sleeve
55-1	-	-	1	597-1282-1	Solenoid Mtg.Bkt.Assy.	67-2	-	-	2	AN818-3D	Nut
55-2	-	-	1	597-1283-1	Cover Assy.,Sol.Bkt.	67-3	-	-	4	2623	Bumper
55-3	-	-	1	600AC-6	Terminal Bd.	68	-	2	-	AN894-4-3D	Bushing (See Note 6)
55-4	-	-	1	MS600-6-1A	Marker Strip	69	-	2	-	1648-512-3	Tube Assy.
55-5	-	-	2	1N4004	Diode	69-1	-	-	2	AN819-4D	Sleeve
55-6	-	-	6	PV18-6R	Lug	69-2	-	-	2	AN818-4D	Nut
55-7	-	-	2	PV18-56R	Lug	69-3	-	-	3	2624	Bumper
55-8	-	-	4	MS15795-705	Washer	70	-	2	-	1648-532-3	Tube Assy.
55-9	-	-	4	AN960PD10	Washer	70-1	-	-	2	AN819-4D	Sleeve
55-10	-	-	4	MS21042-06	Nut	70-2	-	-	2	AN818-4D	Nut
55-11	-	-	4	MS35206-230	Screw	70-3	-	-	3	2624	Bumper
55-12	-	-	4	AN3-4A	Bolt	71	-	2	-	AN833-4D	Elbow 90°
55-13	-	-	A/R	MIL-W-16878	Wire (18AWG)	72	-	2	-	AN837-4D	Elbow 45°
56	-	1	-	597-1225	Solenoid Instl. See Note 5	73	-	4	-	AN924-4D	Nut
56-1	-	-	1	597-1224	Cable	74	-	8	-	AN960PD716	Washer
56-2	-	-	2	597-1226-1	Solenoid(12V) } See Note 1	75	-	6	-	AN3-3A	Bolt
56-3	-	-	2	597-1226-2	Solenoid(28V) }	76	-	4	-	AN4-5A	Bolt
56-4	-	-	4	MS35207-264	Screw	77	-	4	-	NAS602-8	Screw
56-5	-	-	4	AN960PD10	Washer	78	-	4	-	AN960PD8	Washer
57	-	2	-	696-1177-13	Angle	79	-	4	-	AN365-832	Nut
58	-	1	-	597-1272-1	Elec-Hyd. Pump (12V)	80	-	106	-	MS20470AD4-4	Rivet
58-1	-	-	1	597-1268	Mounting Bracket	81	-	14	-	MS20470AD4-5	Rivet
58-2	-	-	1	597-1269	Subplate Assy.	82	-	6	-	BSN14	Butt Splice
58-3	-	-	4	AN4-7A	Bolt	83	-	7	-	BSN18	Butt Splice
58-4	-	-	4	MS35338-44	Washer	84	-	1	-	597-1266	Placard
58-5	-	-	4	AN6290-4	O-Ring						
58-6	-	-	4	AN5-7A	Bolt						
58-7	-	-	4	AN960PD516	Washer						
58-8	-	-	4	AN365-524	Nut						
58-9	-	-	4	AN816-4D	Union						
59	-	1	-	597-1227-1	Elec-Hyd. Pump (28V)						
60	-	1	-	696-1273-1	Tube Assy.						
60-1	-	-	2	MS20819-4D	Sleeve						
60-2	-	-	2	AN818-4D	Nut						
61	-	1	-	696-1273-2	Tube Assy.						
61-1	-	-	2	MS20819-4D	Sleeve						
61-2	-	-	2	AN818-4D	Nut						

- NOTES:
1. Use appropriate part number for 12V or 28V system.
 2. Items 4 thru 16 required for floor mounted hand pump only.
 3. Items 17 thru 30 required for Instrument Panel mounted hand pump only.
 4. Use appropriate part number according to aircraft calibration (knots or mph).
 5. Specify 12V or 28V system.
 6. Required only if aircraft is equipped with 1/4" brake line.