

RELEASED: MAY, 1981

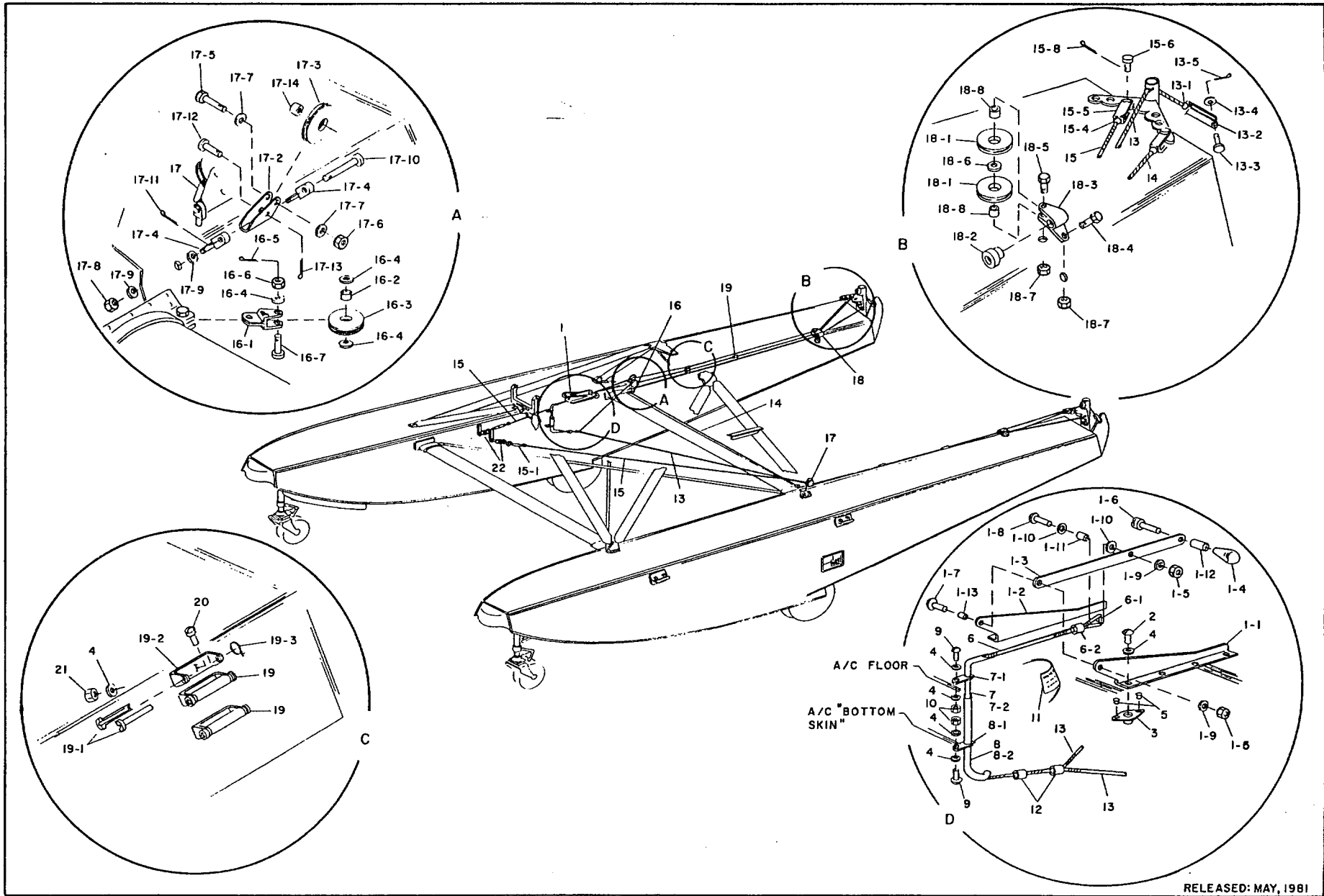
FIGURE 1. EDO ATTACHMENT GEAR MODEL 696-11 FOR EDO 696-3500 FLOATS ON CESSNA 206

TABLE 1. EDO ATTACHMENT GEAR INSTALLATION MODEL 696-11 FOR CESSNA 206 ON 696-3500 FLOATS

KEY TO FIGURE 1.

REF NO.	QTY. PER			PART NUMBER	PART NAME	REF NO.	QTY. PER			PART NUMBER	PART NAME
	FLT.	ASY.	UNT.				FLT.	ASY.	UNT.		
1	1	2	-	696-1113	Strut-Fwd.	33	-	6	-	3369	Spacer
2	1	2	-	696-1110	Strut-Diag.	34	1	2	-	3368-21	Wirepull-Deck
3	-	1	-	696-1111	Strut-Aft. L.H.	35	1	2	-	582-1141	Step Assy.
4	-	1	-	696-1112	Strut-Aft. R.H.	35-1	-	-	1	5036-11	Step
5	1	2	-	38-3013	Spreader Assy.	35-2	-	-	2	AN4-2A	Bolt
6	1	2	-	3395-9585	Tierod Assy.-Spreader	35-3	-	-	4	AN960PD416	Washer
6-1	-	-	1	AN665-61L	Terminal, L.H.	35-4	-	-	2	AN365-428A	Nut
6-2	-	-	1	AN665-61R	Terminal, R.H.	36	1	2	-	46063	Spray Rail Assy.
6-3	-	-	2	AN396-19	Pin, Flathead	36-1	-	-	1	46064	Spray Strip
6-4	-	-	2	AN381-3-12	Cotter Pin	36-2	-	-	5	46065	Clip
6-5	-	-	1	AN316-5L	Checknut, L.H.	36-3	-	-	25	MS20470AD5-6	Rivet
6-6	-	-	1	AN316-5R	Checknut, R.H.	36-4	-	-	25	MS20470AD5-8	Rivet
7	1	2	-	3397-6750	Tierod Assy.	37*	1	2	-	NAS146-57	Bolt
7-1	-	-	1	AN665-80LA	Terminal, L.H.	38*	1	2	-	696-1109	Bushing
7-2	-	-	1	AN665-80RA	Terminal, R.H.						
7-3	-	-	2	AN396-21	Pin, Flathead						
7-4	-	-	2	AN381-3-12	Cotter Pin						
7-5	-	-	1	AN316-6L	Checknut, L.H.						
7-6	-	-	1	AN316-6R	Checknut, R.H.						
8	-	1	-	40786	Support Strut-Fwd. Fus.						
9	1	2	-	40772	Fitting, Fwd. Fus.						
10	-	1	-	40795	Tube Assy.-Fwd.Strt.Supp.						
11	-	1	-	AN5-24A	Bolt						
12	-	9	-	AN960PD516	Washer						
13	-	1	-	AN970-5	Washer						
14	-	1	-	1452-054	Nut, Barrel						
15	-	2	-	AN7-30A	Bolt						
16	-	14	-	AN960PD716	Washer						
17	-	6	-	MS20364-720A	Nut						
18	-	4	-	AN27-34A	Bolt						
19	-	4	-	MS20364-524A	Nut						
20	-	1	-	40663	Fitting, Fwd.Deck, L.H.						
21	-	1	-	40664	Fitting, Fwd.Deck, R.H.						
22	1	2	-	40630	Fitting, Fwd. Strut						
23	-	4	-	AN25-29A	Bolt						
24	-	1	-	40724	Ftg.,Aft.Fus.Attach, L.H.						
25	-	1	-	40725	Ftg.,Aft Fus.Attach, R.H.						
26	-	2	-	3107-21	Eyebolt						
27	-	2	-	MS2036520A	Nut						
28	-	1	-	40644	Ftg., Rear Deck, L.H.						
29	-	1	-	40645	Ftg., Rear Deck, R.H.						
30	-	2	-	AN26-29A	Bolt						
31	-	4	-	AN960PD616	Washer						
32	-	2	-	MS20364-624A	Nut						

* REPLACES AIRCRAFT SUPPLIED P/N NAS146-38



RELEASED: MAY, 1981

FIGURE 2. EDO WATER RUDDER CONTROLS MODEL 696-11
EDO 696-3500 FLOATS ON CESSNA 206

TABLE 2. EDO WATER RUDDER CONTROLS, INSTALLATION MODEL 696-11 FOR CESSNA 206 ON 696-3500 FLOATS
KEY TO FIGURE 2.

REF NO.	QTY. PER			PART NUMBER	PART NAME	REF NO.	QTY. PER			PART NUMBER	PART NAME
	FLT.	ASY.	UNT.				FLT.	ASY.	UNT.		
1	-	1	-	696-1182-1	W/R Retract Handle Assy.	15	1	2	-	3351-216.0-3343	Cable Assy. W/R Control
1-1	-	-	1	696-1183-11	Retract handle Bkt. L.H.	15-1	-	-	1	AN140-16S	Turnbuckle
1-2	-	-	1	696-1183-12	Retract handle Bkt. R.H.	15-2	-	-	1	AN100C4	Thimble
1-3	-	-	1	696-1184	Retract Handle	15-3	-	-	1	28-2-G	Nicopress Sleeve
1-4	-	-	1	P0K-72	Knob	15-4	-	-	1	AN664C3	Terminal, Ball End
1-5	-	-	2	AN364-1032	Nut	15-5	-	-	1	RA2500-3	Terminal
1-6	-	-	1	AN501D516-20	Screw	15-6	-	-	1	AN393-9	Pin, Flathead
1-7	-	-	1	AN525-10R10	Screw	15-7	-	-	1	AN960-10L	Washer
1-8	-	-	1	AN525-10R16	Screw	15-8	-	-	1	AN381-2-6	Cotter Pin
1-9	-	-	2	AN960PD10L	Washer	16	1	2	-	38-144	Pulley Bkt. Assy.(Single
1-10	-	-	2	AN970-3	Washer	16-1	-	-	1	38-145	Bracket Assy.
1-11	-	-	1	NAS43DD3-28	Spacer	16-2	-	-	1	0210	Bushing
1-12	-	-	1	NAS43DD5-40	Spacer	16-3	-	-	1	0915-1	Pulley
1-13	-	-	1	AA-346-1	Bearing	16-4	-	-	3	AN960-10L	Washer
2	-	8	-	AN3-3A	Bolt.	16-5	-	-	1	AN381-2-8	Cotter Pin
3	-	8	-	AN366F-1032A	Nutplate	16-6	-	-	1	AN310-3	Nut
4	-	20	-	AN960PD10	Washer	16-7	-	-	1	AN3-6	Bolt
5	-	16	-	MS20426AD3-5	Rivet	17	2	4	-	60-W-911	Pulley Bracket Assy.
6	-	1	-	3340-41.0-3355	Cable Assy.	17-1	-	-	1	60-W-911-1	Pulley Bkt. Sub-Assy.
6-1	-	-	1	AN100C4	Thimble	17-2	-	-	1	0209	Bracket
6-2	-	-	1	28-2-G	Nicopress Sleeve	17-3	-	-	1	0915-1	Pulley
7	-	1	-	2832	Fairlead Tube Assy.	17-4	-	-	2	00-W-850	Eyebolt
7-1	-	-	1	2832-2	Flange	17-5	-	-	1	AN3-7A	Bolt
7-2	-	-	1	2832-1	Tube	17-6	-	-	1	AN365-1032	Locknut
8	-	1	-	2833	Fairlead Tube Assy.	17-7	-	-	2	AN960D10	Washer
8-1	-	-	1	2833-2	Flange	17-8	-	-	2	AN365-428	Locknut
8-2	-	-	1	2833-1	Tube	17-9	-	-	2	AN960PD416	Washer
9	-	2	-	AN525-10R6	Screw	17-10	-	-	1	AN394-73	Pin, Flathead
10	-	2	-	MS20365-1032	Nut	17-11	-	-	1	AN381-2-8	Cotter Pin
11	-	1	-	696-1187-11	Placard	17-12	-	-	1	AN393-15	Pin, Flathead
12	-	2	-	28-2-G	Nicopress Sleeve	17-13	-	-	1	AN381-2-6	Cotter Pin
13	1	2	-	3343-180.0-3355	Cable Assy. W/R Retract	17-14	-	-	1	0210	Bushing
13-1	-	-	1	AN664C3	Terminal, Ball End	18	1	2	-	3925	D'ble Pulley & F'ld Assy
13-2	-	-	1	RA2500-3	Terminal	18-1	-	-	2	0915-1	Pulley
13-3	-	-	1	AN393-9	Pin, Flathead	18-2	-	-	1	38-081	Fairlead
13-4	-	-	1	AN960-10L	Washer	18-3	-	-	1	38-099	Housing,D'ble. Pulley
13-5	-	-	1	AN381-2-6	Cotter Pin	18-4	-	-	1	AN3-12A	Bolt
14	-	1	-	3343-288.0-3353	Cable Assy, Interfloat	18-5	-	-	1	AN3-14A	Bolt
14-1	-	-	1	AN664C3	Terminal, Ball End	18-6	-	-	1	AN960D10L	Washer
14-2	-	-	1	RA2500-3	Terminal	18-7	-	-	2	MS20364-1032	Nut
14-3	-	-	1	AN393-9	Pin, Flathead	18-8	-	-	2	0210	Bushing
14-4	-	-	1	AN960-10L	Washer	19	4	8	-	68-W-654	Fairlead Assy.
14-5	-	-	2	AN381-2-6	Cotter Pin	19-1	-	-	2	0494	Fairlead
14-6	-	-	1	AN393-11	Pin, Flathead	19-2	-	-	1	68-W-654-1	Bracket
14-7	-	-	1	AN130-16S	Turnbuckle	19-3	-	-	A/R	AN995C41-2	Lockwire
14-8	-	-	1	AN100C4	Thimble, Wire Cable	20	4	8	-	AN526-1032-10	Screw
14-9	-	-	1	28-2-G	Nicopress Sleeve	21	4	8	-	AN365-1032	Nut
						22	1	2	-	0-376	Spring

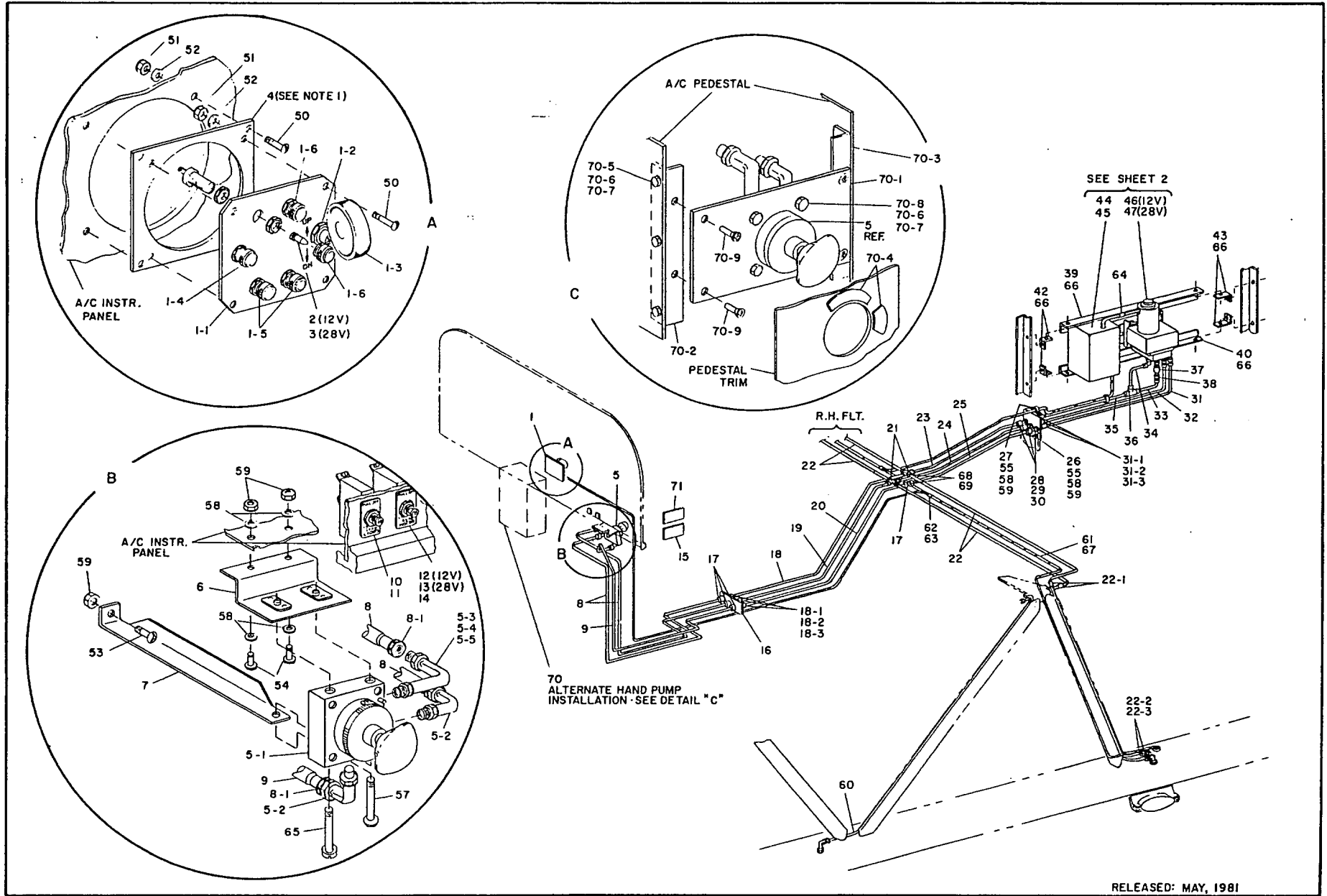


FIGURE 3. EDO ELECTRIC-HYDRAULIC POWER PACK & BRAKE INSTALLATION (SHEET 1 OF 2) FOR EDO 696-3500 AMPHIBIOUS FLOATS ON CESSNA 206 (INSTALLATION MODEL 696-11)

TABLE 3. EDO ELECTRIC-HYDRAULIC POWER PACK & BRAKE INSTALLATION MODEL 696-11 FOR CESSNA 206 ON 696-3500 FLOATS
KEY TO FIGURE 3

REF NO.	QTY. PER			PART NUMBER	PART NAME	REF NO.	QTY. PER			PART NUMBER	PART NAME
	FLT.	ASY.	UNT.				FLT.	ASY.	UNT.		
1	-	1	-	597-1280-1	Control Panel Assy.	23	-	1	-	1648-91-8	Tube Assy. (Up)
1-1	-	-	1	597-1281	Plate, Control Panel	24	-	1	-	1648-90-8	Tube Assy. (Dn)
1-2	-	-	1	MS25125-E3	Switch	25	-	1	-	1648-89-8	Tube Assy. (Res)
1-3	-	-	1	0861233-2	Knob	26	-	1	-	696-1178	Bracket
1-4	-	-	1	801-1030-0331-504	Ind. Lt., Red	27	-	1	-	MS21919DF8	Clamp
1-5	-	-	2	801-1030-0333-504	Ind. Lt., Amber	28	-	3	-	AN832-4D	Union
1-6	-	-	2	801-1030-0334-504	Ind. Lt., Blue	29	-	3	-	AN924-4D	Nut
2	-	5	-	330	Bulb (12V)	30	-	3	-	AN960PD716	Washer
3	-	5	-	327	Bulb (28V) } (See note 2)	31	-	1	-	696-1173-1	Tube Assy. (Res)
4	-	1	-	696-1188-11	Adapter Plate(See note 1)	31-1	-	1	-	2624	Bumper
5	-	1	-	597-1265-2	Emerg. Hand Pump	31-2	-	2	-	AN819-4D	Sleeve
5-1	-	-	1	30-0050/A-50	Hand Pump	31-3	-	2	-	AN818-4D	Nut
5-2	-	-	2	C5515X4	Elbow	32	-	1	-	696-1173-2	Tube Assy. (Dn)
5-3	-	-	1	AN833-4D	Elbow	33	-	1	-	696-1173-3	Tube Assy. (Up)
5-4	-	-	1	AN924-4D	Nut	34	-	1	-	696-1173-4	Tube Assy.
5-5	-	-	1	AN6290-4	O-Ring	35	-	1	-	1648-182-1	Tube Assy. (Up)
6	-	1	-	696-1175-1	Bracket, Hand Pump	36	-	1	-	AN824-4D	Tee
7	-	1	-	597-1263-11	Brace, Hand Pump	37	-	1	-	483-1/80-2-2	Check Valve
8	-	2	-	597-1295-420	Flex Hose Assy.(Up/Dn)	38	-	1	-	AN816-4D	Union
8-1	-	-	2	3901-04544	Coupling	39	-	1	-	696-1177-11	Angle, Upper
9	-	1	-	597-1295-450	Flex Hose Assy.(Res)	40	-	1	-	696-1177-12	Angle, Lower
10	-	1	-	109-210-101	Circuit Breaker (10A)	41	-	2	-	696-1177-13	Angle
11	-	1	-	597-1264-1	Nameplate	42	-	2	-	597-1262-3	Clip
12	-	1	-	109-235-101	Ckt.Bkr.(12V)	43	-	2	-	597-1262-4	Clip
13	-	1	-	109-220-101	Ckt.Bkr.(28V) (See note 2)						
14	-	1	-	597-1264	Nameplate						
15	-	1	-	597-1266	Placard						
16	-	1	-	696-1179	Spacer						
17	-	4	-	AN815-4D	Union						
18	-	1	-	1648-412-4	Tube Assy. (Up)						
18-1	-	-	A/R	2624	Bumper						
18-2	-	-	2	AN819-4D	Sleeve						
18-3	-	-	2	AN818-4D	Nut						
19	-	1	-	1648-422-4	Tube Assy. (Dn)						
20	-	1	-	1648-432-4	Tube Assy. (Res)						
21	-	2	-	AN827-4D	Cross						
22	-	4	-	696-1172-1	Tube Assy. (Aft Strut)						
22-1	-	-	5	2624	Bumper						
22-2	-	-	1	MS20819-4D	Sleeve						
22-3	-	-	1	AN818-4D	Nut						

NOTES:
1. Item 4, Adapter Plate, used only if A/C Instrument Panel has square cutout.
2. Specify 12 Volt or 28 Volt System.

31-7

TABLE 3. EDO ELECTRIC-HYDRAULIC POWER PACK & BRAKE INSTALLATION MODEL 696-11 FOR CESSNA 206 ON 696-3500 FLOATS
KEY TO FIGURE 3

REF NO.	QTY. PER			PART NUMBER	PART NAME	REF NO.	QTY. PER			PART NUMBER	PART NAME
	FLT.	ASY.	UNT.				FLT.	ASY.	UNT.		
44	-	1	-	597-1260-1	Pwr.Pack Sol.Bkt.Assy.	53	-	7	-	AN3-3A	Bolt
44-1	-	-	1	597-1282-1	Soleniod Mtg.Bkt. Assy.	54	-	2	-	AN3-4A	Bolt
44-2	-	-	1	597-1283-1	Cover Assy, Sol. Bkt.	55	-	3	-	AN3-5A	Bolt
44-3	-	-	1	600AC-6	Terminal Board	56	-	4	-	AN4-5A	Bolt
44-4	-	-	1	MS600-6-1A	Marker Strip	57	-	1	-	AN4-32A	Bolt
44-5	-	-	2	1N4004	Diode	58	-	10	-	AN960PD10	Washer
44-6	-	-	6	PV18-6R	Lug	59	-	6	-	AN365-1032	Nut
44-7	-	-	2	PV18-56R	Lug	60	-	2	-	2205-850-4	Tube Assy.
44-8	-	-	4	MS15795-705	Washer	61	-	22ft	-	3405	Cable Assy.
44-9	-	-	4	AN960PD10	Washer	62	-	6	-	BSN14	Buttsplice
44-10	-	-	4	MS21042-06	Nut	63	-	7	-	BSN18	Buttsplice
44-11	-	-	4	MS35206-230	Screw	64	-	3	-	B4072	Buttsplice
44-12	-	-	4	AN3-4A	Bolt	65	-	1	-	1/2-28 x 3" Lg.	Capscrew
44-13	-	-	A/R	MIL-W-16878	Wire (18 AWG)	66	-	110	-	MS20470AD4-4	Rivet
45	-	1	-	597-1225	Sol.Instl. (See note 2)	67	-	10	-	PV18-6R	Terminal Lug
45-1	-	-	1	597-1224	Cable	68	-	4	-	AN818-4D	Nut
45-2	-	-	2	597-1226-1	Sol.(12V) } (See note 2)	69	-	4	-	AN819-4D	Sleeve
45-3	-	-	2	597-1226-2	Sol.(28V) }	70	-	A/R	-	696-1116	Kit, Alternate Hand Pump Installation
45-4	-	-	4	MS35207-264	Screw						
45-5	-	-	4	AN960PD10	Washer	70-1	-	-	1	696-1117	Mounting Plate
46	-	1	-	597-1272-2	Hydraulic Pump Assy. 12V (See note 2)	70-2	-	-	1	696-1118-1	Mtg. Angle, L.H.
						70-3	-	-	1	696-1118-2	Mtg. Angle, R.H.
46-1	-	-	1	597-1268	Mtg.Bkt.Hyd. Pump	70-4	-	-	1	696-1214	Placard
46-2	-	-	1	597-1269-1	Subplate Assy.	70-5	-	-	6	AN3-3A	Bolt
46-3	-	-	-		Intentionally Left Blank	70-6	-	-	10	AN960PD10	Washer
46-4	-	-	4	AN4-7A	Bolt	70-7	-	-	10	AN365D1032	Nut
46-5	-	-	4	MS35338-44	Washer	70-8	-	-	4	AN3-14A	Bolt
46-6	-	-	4	AN6290-4	O-Ring	70-9	-	-	4	AN507-832-8	Screw
46-7	-	-	4	AN5-7A	Bolt	71	-	1	-	597-1274	Placard
46-8	-	-	4	AN960PD0516	Washer						
46-9	-	-	4	AN365-524	Nut						
46-10	-	-	2	AN816-4D	Union						
46-11	-	-	1	AN911-10	Union						
46-12	-	-	1	MS20822-4D	Union						
47	-	1	-	597-1227-2	Hydraulic Pump Assy. 28V (See note 2)						
48	-	1	-	597-1267-1	Support Bracket						
49	-	1	-	597-1267-2	Support Bracket						
50	-	8	-	NAS 602-8	Screw						
51	-	8	-	AN365-832	Nut						
52	-	8	-	AN960PD8L	Washer						

NOTES:
1. Item 4, Adapter Plate, used only if A/C Instrument Panel has square cutout.
2. Specify 12 Volt or 28 Volt System.

31-9