

Figure #1  
EDO ATTACHMENT GEAR

(CONFIGURATION "B")

TABLE 1. EDO ATTACHMENT GEAR (CONFIGURATION "B")  
 FOR PIPER PA 18 SERIES AIRPLANES ON MOD. 089/089A-2000 FLOATS  
 (Installation Assembly Models 089/089A23 & 26)

KEY TO FIGURE 1.

REF. NO.	PART NAME AND ATTACHING HARDWARE	PART NUMBERS	
		OLD INSTL.	NEW (1969)
1-2	Strut - Forward L/R	* 14397	69475
	Bolt - Upper	* AN6-17A	AN26-26A
	Bolt - Lower	* AN6-17A	AN26-26A
	Washer	AN960PD616	
	Nut	* AN365-624	* AN364-624
3-4	Strut - Diagonal L/R	* 14399	69476
	Bolt - Upper	* AN5-15A	AN25-26A
	Bolt - Lower	* AN5-15A	AN25-26A
	Washer	AN960PD516	
	Nut	* AN365-524	AN364-524
5-6	Strut - Aft L/R	* 14401	69477
	Bolt - Upper	* AN5-14A	AN25-26A
	Bolt - Lower	* AN5-14A	AN25-26A
	Washer	AN960PD516	
	Nut	AN365-524	AN364-524
7	Tie Rod Assy. - Forward	3394-4800	
	Wirepull Forward Float L/R	88-C-709-3.5-27	
	Spacer	88-C-710	
	Bolt	AN6-26A	
	Washer	AN960PD616	
	Nut	AN365-624	
	Wirepull Forward Fuselage L/R	14393	
	Bolt	AN4-25A	
	Washer (Under Bolt Head)	AN690PD416	
	Washer (Under Nut)	AN960-416	
	Nut	AN365-428	
	Bushing (On PA18 & 18A150 Only)	14412	
	Bushing (Not on PA18 & 18A150)	14413	
8	Tie Rod Assy. - Aft	3394-4625	
	Wirepull Aft Float L/R	88-C-709-1.2-29	
	Spacer	88-C-710	
	Bolt	AN6-26A	
	Washer	AN960PD616	
	Nut	AN365-624	
9-10	Wirepull Aft Fuselage L/R	Part of Aft Fus. Attachment Fitting (See Ref. No. 18-19)	
	Spreader Assy. - Forward/Aft	89-C-703	
	Tube - Spreader	89-C-703-1	
	Fitting - Spreader End	88-C-704	
	Bolt	AN6DD24A	
	Washer	AN960PD616	
	Nut	AN315D6R	
	Plate - Spreader End	88-C-705	

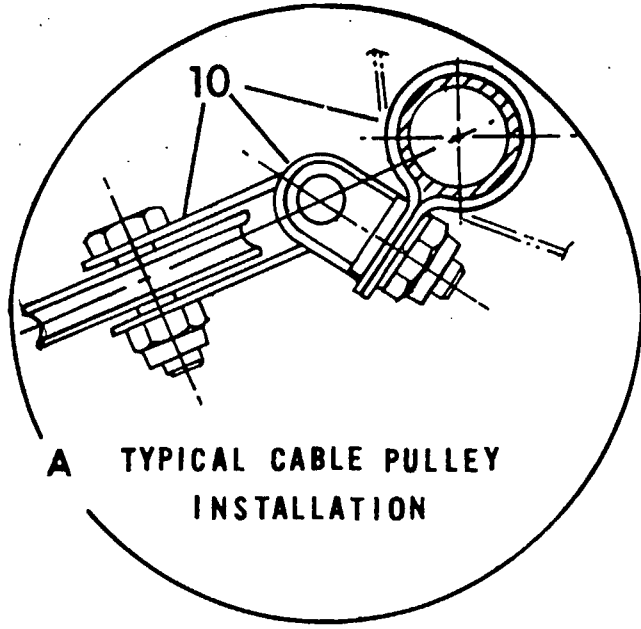
2.50

TABLE 1. EDO ATTACHMENT GEAR (CONFIGURATION "B")  
 FOR PIPER PA 18 SERIES AIRPLANES ON MOD. 089/089A-2000 FLOATS  
 (Installation Assembly Models 089/089A23 & 26)

KEY TO FIGURE 1.

REF. NO.	PART NAME AND ATTACHING HARDWARE	PART NUMBERS	
		OLD INSTL.	NEW (1969)
11	Eyebolt - Spreader End		88-C-706
	Washer		AN960PD616
	Nut		AN365-624
	Tie Rod Assy. - Spreader		3393-8700
	Wirepull - Spreader		88-C-708-3.8-42
	Spacer		88-C-710
	Bolt		AN6-24A
12-13	Washer		AN960PD616
	Nut		AN365-624
	Float Deck Attach. Forward L/R		
	Fitting - Forward Float Swivel	* 14394	69472
	Bolt		AN6-33A
14-15	Washer		AN960PD616
	Nut		AN365-624
	Float Deck Attach. Aft L/R		
	Fitting - Aft Float Swivel	* 14395L/96R	69473-1L/-2R
16-17	Bolt		AN6-34A
	Washer		AN960PD616
	Nut		AN365-624
	Fuselage Attachment - Forward L/R		
18-19	Fitting - Fwd. Fuselage Swivel L/R	14391L/92R	69471-1L/-2R
	Bolt		AN6-34A
	Washer		AN960PD616
	Nut		AN365-624
18-19	Fuselage Attachment Aft L/R		
	Fitting Aft Fuselage L/R	* 14403	69474
	Angle Bolt		14408
	- Saddle Plate		05990
	Washer		AN960PD416
	Nut		AN365-428
	"U" Bolt		14409
	Washer		AN960PD10
	Nut		AN365-1032

\* NOTE: All old struts and old float/fuselage attachment fittings have been superseded by new struts and their respective float/fuselage attachment fittings.  
 When ordering new struts as replacements for old struts, the respective float/fuselage attachment fittings and hardware must also be ordered. Such replacements require FAA Form 337 Approval.



FWD  
←

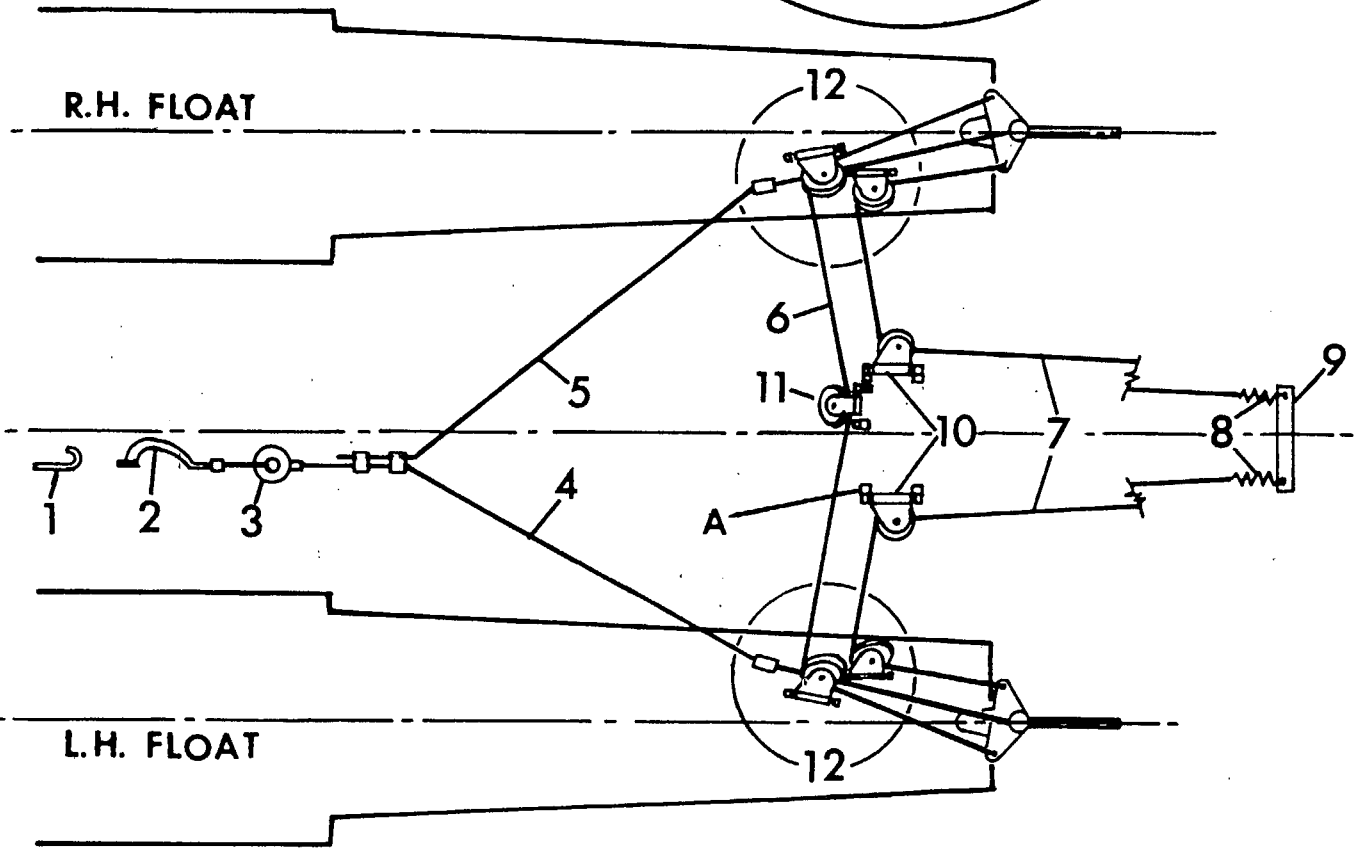


Figure #2  
EDO WATER RUDDER CONTROLS  
(Schematic)

(CONFIGURATION "B")

TABLE 2. EDO WATER RUDDER CONTROLS (CONFIGURATION "B")  
 FOR PIPER PA 18 SERIES AIRPLANES ON MOD. 089/089A-2000 FLOATS  
 (Installation Assembly Models 089/089A23 & 26)

KEY TO FIGURE 2.

REF. NO.	PART NAME AND ATTACHING HARDWARE	PART NUMBERS Figure in ( ) Indicates Quantity per Installation
1	Hook - Retracting Cable Handle Screw Washer Nut	60-W-043 (1) AN526-1032-12 (1) AN960-10 (1) AN365-1032 (1)
2	Handle, Retract Screw, Chain Attachment	0367 (1) AN504-6-8 (1)
3	Fairlead Tube Assy. Screw Floorboard Attachment Washer Nut	92-Ws-509 (1) AN525-832-12 (3) AN960-8 (3) AN365-832 (3)
4	Cable Assy. - Retract (Long) Nicro Press Sleeve	3340-216-3355 (1) 28-2-G
5	Cable Assy. - Retract (Short)	3340-216-3355 (1)
6	Cable Assy. - Interfloat	3343-192-3353 (1)
7	Cable Assy. - Rudder Control	3340-224-3350 (2)
8	Spring	D-376 (2)
9	Extension, Rudder Horn Bolt Washer Nut	92-Ws-508 (1) AN4-6A (2) AN960-D416 (2) AN365-428 (2)
10	Pulley Bracket Assy. (Fuselage) Consisting Of { Pulley Bracket Sub-Assembly Pin, Flat Head Pin, Cotter Eyebolt Washer Nut Clamp, Tube	60-W-911 (2)  60-W-911-1 (2) AN394-73 (2) AN381-2-8 (2) 00-W-850 (4) AN960PD416 (4) AN365-428 (4) 2258-6 (4)

TABLE 2. EDO WATER RUDDER CONTROLS (CONFIGURATION "B")  
 FOR PIPER PA 18 SERIES AIRPLANES ON MOD. 089/089A-2000 FLOATS  
 (Installation Assembly Models 089/089A23 & 26)

KEY TO FIGURE 2.

REF. NO.	PART NAME AND ATTACHING HARDWARE	PART NUMBERS Figure in ( ) Indicates Quantity per Installation
11	Pulley Bracket Assy. (Interfloat) Consisting Of Pulley Bracket Sub-Assembly Pin - Flat Head Pin - Cotter Eyebolt Washer Nut Clamp, Tube	2256 (1)  2256-1 (1) AN394-41 (1) AN381-2-8 (1) 00-W-850 (2) AN960PD416 (2) AN365-428 (2) 2258-4 (2)
12	Deck Hardware, Water Rudder Control Consisting Of { Pulley Bracket Assy. (For Breakdown See Item #10) { Spacer (Inside Float on Eyebolt) { Fairlead Assy. Consisting Of { Fairlead { Bracket { Spacer, Fairlead { Screw { Washer { Nut	89-Ws-505 (2)  60-W-911 (4)  92-Ws-506-1 (2) 68-W-654 (2)  0494 (4) 68-W-654-1 (2) 2712 (2) AN526-1032-18 (2) AN960PD10 (2) AN365-1032 (2)