

TABLE OF CONTENTS

Edo Inst. Model No.	Edo Float Model No.	Cessna Airplane Model No.	Edo Attachment Gear	Edo W/R Controls For Cessna		Edo Electrical System	Edo Hydraulic System
				180C & UP	180, A & B		
271	249-2870	180	Fig. 1 Pg. 4 Table 1 Pg. 5	Fig. 2 Pg. 6 Table 2 Pg. 7	Fig. 3 Pg. 8		
318	289-2700 Amphibious				Table 3 Pg. 9	Fig. 4 Pg. 10 Table 4 Pg. 11	
493	439-2705 Amphibious					Fig. 5 Pg. 12 Table 5 Pg. 13	Fig. 6 Pg. 14 Table 6 Pg. 15,17

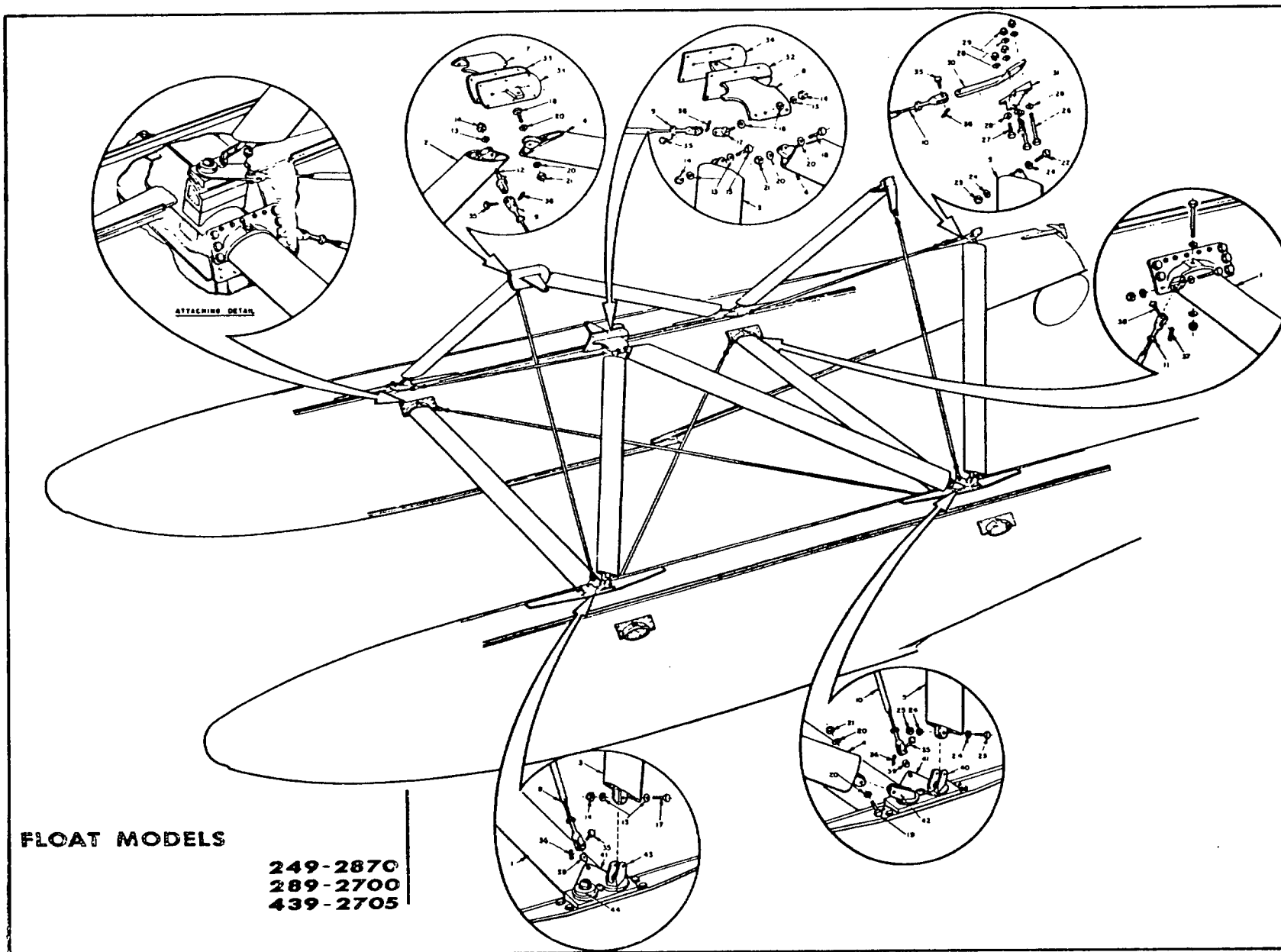


FIGURE 1. EDO ATTACHMENT GEAR FOR
EDO 249-2870 FLOATS ON CESSNA 180 AIRPLANE (INSTL. MOD. 271)
EDO 289-2700 AMPHIBIOUS FLOATS ON CESSNA 180 AIRPLANE (INSTL. MOD. 318)
EDO 439-2705 AMPHIBIOUS FLOATS ON CESSNA 180 AIRPLANE (INSTL. MOD. 493)

Handwritten notes:
 12510
 27671
 37672

TABLE 1. EDO ATTACHMENT GEAR NO. 271, 318 AND 493
 KEY TO FIGURE 1

REF. NO.	PART NUMBER	PART NAME	REF. NO.	PART NUMBER	PART NAME
1	16550	Spreader Tube (2 Req.)	25 ✓	AN365-624	Nut (4 Req.)
2	16784	Front Strut Assy. R/H	26 ✓	AN5-33A	Bolt (4 Req.)
3	16784	Front Strut Assy. L/H	27 ✓	AN5-14A	Bolt (4 Req.)
4	16786	Diagonal Strut Assy. (2 Req.)	28 ✓	AN960D516	Washer (16 Req.)
5	16788	Rear Strut Assy. L/H	29 ✓	AN365-524	Nut (8 Req.)
6	16788	Rear Strut Assy. R/H	30 ✓	16780	Wirepull Rear Fuselage LH
7 ✓	16777	Front Fuselage Fitting RH		16781 ✓	Wirepull Rear Fuselage RH
8 ✓	16776	Front Fuselage Fitting LH	31 ✓	16778	Fitting Rear Fuselage LH
9 ✓	16790	Crosswire Assy. Front (2 Req.)		16779	Fitting Rear Fuselage RH
10 ✓	16791	Crosswire Assy. Rear (2 Req.)	32 ✓	16792	Cover Plate LH
11	16710	Spreader Wire Assy. (2 Req.)	33 ✓	16793	Cover Plate RH
12	08260	Eyebolt (2 Req.)	34 ✓	16794	Gasket (2 Req.)
13 ✓	AN960D716	Washer (8 Req.)	35 ✓	AN396-21	F.H. Pin (8 Req.)
14 ✓	AN365-720	Nut (5 Req.)	36 ✓	AN381-3-12	Cotter Pin (8 Req.)
15 ✓	AN7-15A	Bolt	37 ✓	AN381-2-8	Cotter Pin (4 Req.)
16	08261	Spacer (2 Req.)	38 ✓	AN394-15	F.H. Pin (4 Req.)
17 ✓	AN7-17A	Bolt (2 Req.)	39 ✓	AN960-616	Washer (4 Req.)
18 ✓	AN5-14A	Bolt (2 Req.)	40 ✓	1407-46	Rear Channel Fitting (2 Req.)
19 ✓	AN5-16A	Bolt (2 Req.)	41	1547-23	Wirepull Front (2 Req.)
20 ✓	AN960D516	Washer (8 Req.)		1547-27	Wirepull Rear (2 Req.)
21 ✓	AN365-524	Nut (4 Req.)	42	1409-25	Int. Channel Fitting (2 Req.)
22 ✓	AN6-16A	Bolt (2 Req.)	43	1408-50	Front Channel Fitting (2 Req.)
23 ✓	AN6-17A	Bolt (2 Req.)	44	16547	Spacer (2 Req.)
24	AN960D616	Washer (8 Req.)			

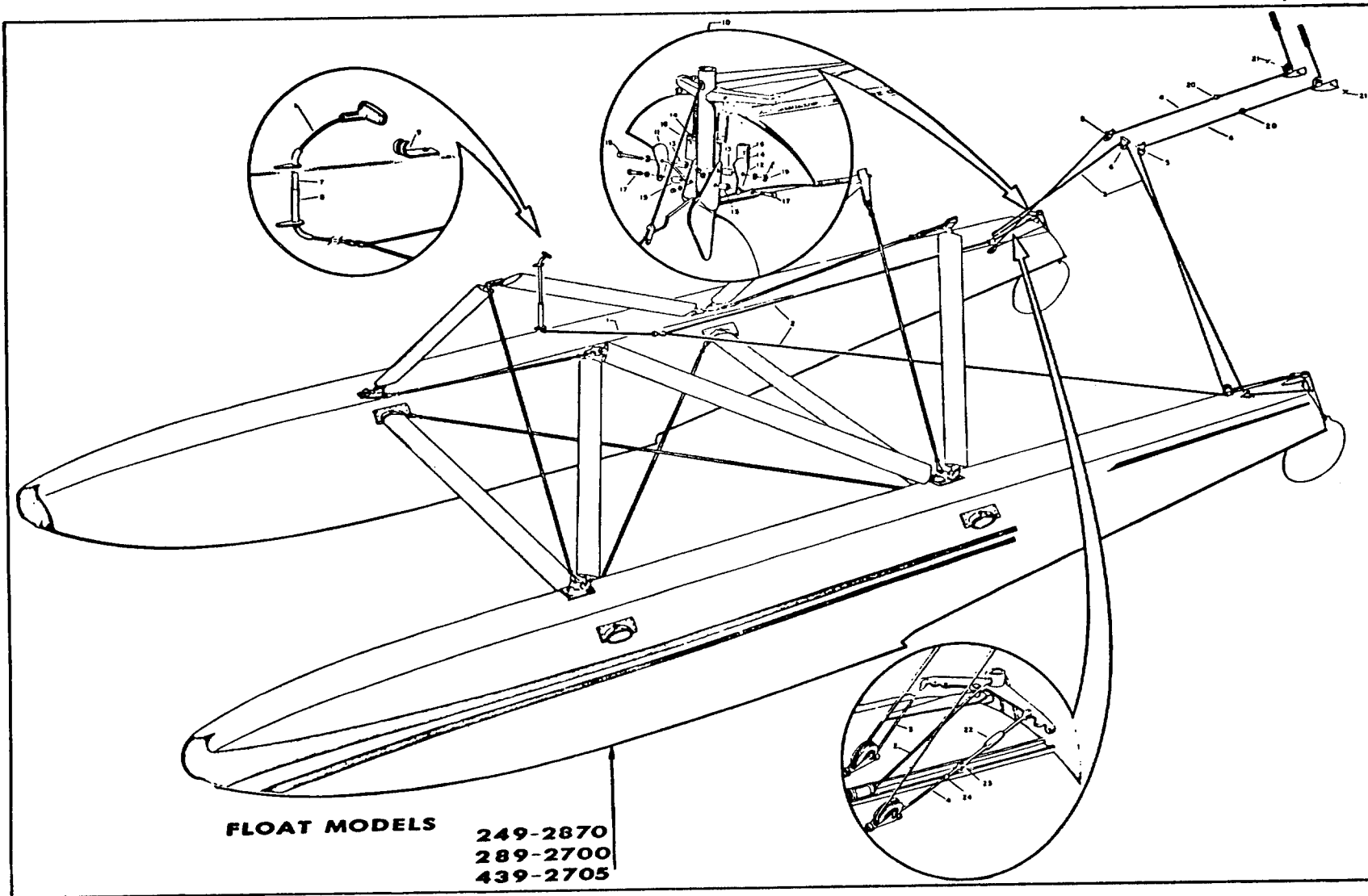


FIGURE 2. EDO WATER RUDDER CONTROLS FOR
 EDO 249-2870 FLOATS ON CESSNA 180C AND UP AIRPLANES (INSTL. MOD. 271)
 EDO 289-2700 AMPHIBIOUS FLOATS ON CESSNA 180C AND UP AIRPLANES (INSTL. MOD. 318)
 EDO 439-2705 AMPHIBIOUS FLOATS ON CESSNA 180C AND UP AIRPLANES (INSTL. MOD. 493)

TABLE 2. EDO WATER RUDDER CONTROLS NO. 271, 318 AND 493 (CESSNA 180C AND UP)
KEY TO FIGURE 2

REF. NO.	PART NUMBER	PART NAME	REF. NO.	PART NUMBER	PART NAME
1 ✓	2706-4	Cable Assy.-Fwd. Retracting	6 ✓	00-W-850	Eyebolt (4 Req.)
	28-2-G	Nico-Press Sleeve		AN394-73	Pin-Flat Head (2 Req.)
	2705	Tee Handle		2256	Pulley Bracket Assembly
	9-0608-11	Spring		0915	Pulley
	3/32-7 x 7	Control Cable-Stainless (4' Req.)		00-W-850	Eyebolt (2 Req.)
2 ✓	AN664C3	Ball End	2257	Bracket	
	2707-18	Cable Assy.-Aft Retracting (2 Req.)	AN394-41	Pin-Flat Head	
	28-2-G	Nico-Press Sleeve	7 2832 { #2831	Fairlead Tube (Upper)	
	3/32-7 x 7	Control Cable-Stainless (36' Req.)	8 2833	Fairlead Tube (Lower)	
	RA-2500-3	Terminal (2 Req.)	9 2708	Hook	
3 ✓	AN664C3	Ball End (2 Req.)	10 2880	Water Rudder Centering Lock (Includes Items 11-19)	
	1571-16	Cable Assy.-Interfloat	11 2881	Cam LH	
	AN130-16S	Turnbuckle Assembly	12 2882	Cam RH	
	AN100C4	Thimble	13 2883	Spacer - 7/16 Hole (2 Req.)	
	28-2-G	Nico-Press Sleeve	14 2884	Spacer-Rub Strip (8 Req.)	
4 ✓	3/32-7 x 7	Control Cable-Stainless (16' Req.)	15 2895	Spacer-191 Hole (2 Req.)	
	RA-2500-3	Terminal	16 2896	Rubbing Strip (2 Req.)	
	AN664C3	Ball End	17 AN3-20A	Bolt (2 Req.)	
	2707-16	Cable Assy.-Control (2 Req.)	18 AN7-60	Bolt	
	3/32-7 x 7	Control Cable-Stainless (32' Req.)	19 AN320-7	Nut	
5 ✓	RA-2500-3	Terminal (2 Req.)	20 68-W-654	Fairlead (2 Req.)	
	AN664C3	Ball End (2 Req.)	21 AN281-4-20	Pin - Cotter (2 Req.)	
	60-W-911	Pulley Bracket Assy. (2 Req.)	22 AN130-16S	Turnbuckle Assembly (2 Req.)	
	0209	Bracket (2 Req.)	23 AN100C4	Thimble (2 Req.)	
	0915	Pulley (2 Req.)	24 28-2-G	Nico-Press Sleeve (2 Req.)	

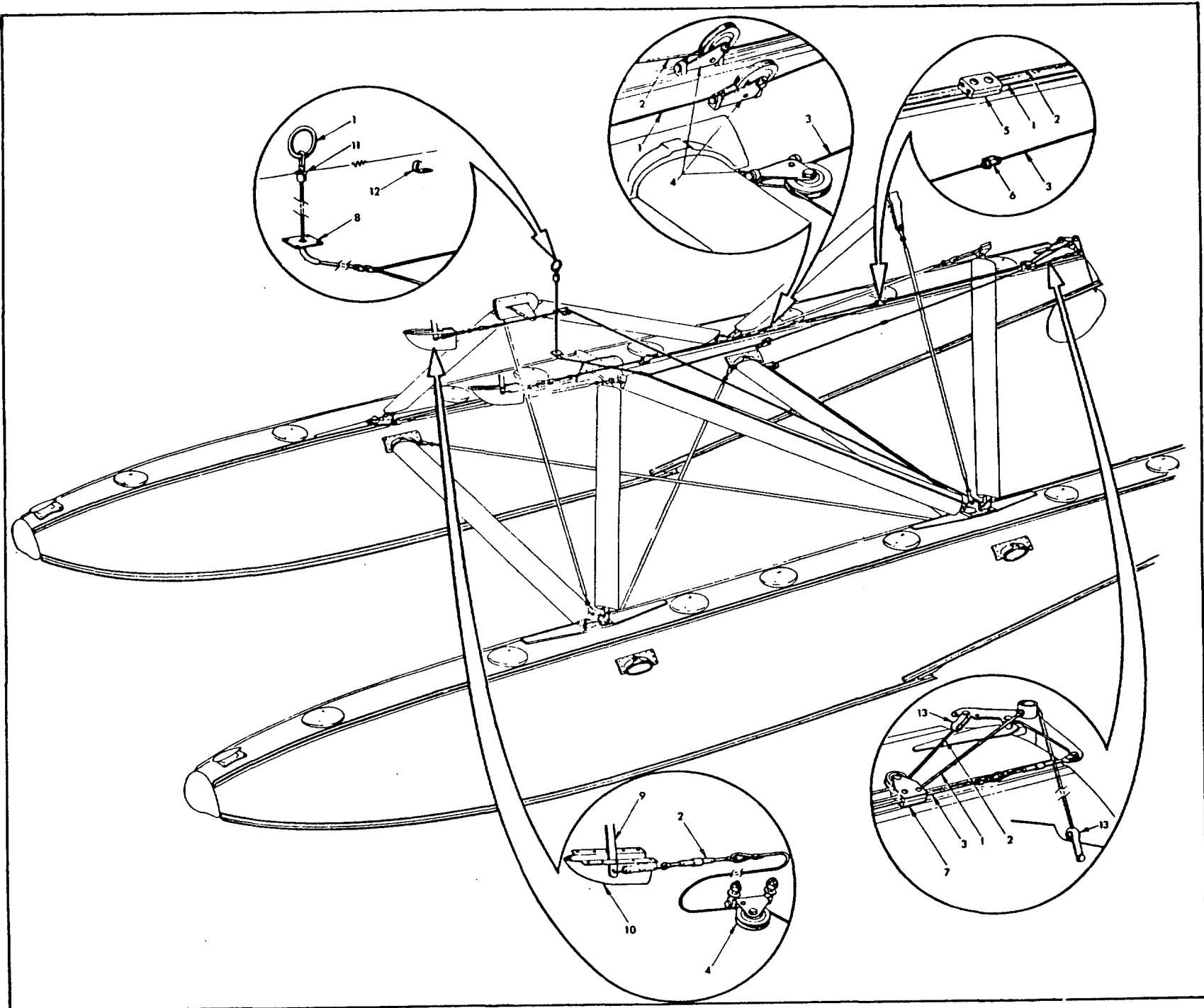


FIGURE 3. EDO WATER RUDDER CONTROLS FOR
 EDO 249-2870 FLOATS ON CESSNA 180, A & B AIRPLANES (INSL. ASS'Y MOD. 271)
 EDO 289-2700 AMPHIBIOUS FLOATS ON CESSNA 180, A & B AIRPLANES (INSL. ASS'Y MOD. 318)

TABLE 3. EDO WATER RUDDER CONTROLS MOD. 271 AND 318 (CESSNA 180, A & B)
KEY TO FIGURE 3

REF. NO.	PART NUMBER	PART NAME	REF. NO.	PART NUMBER	PART NAME
1	1573-20 AN664C3 AN393-9 AN381C2-6 AN100C-4 370-22003 (MBA) 28-8-G 3/32 Dia. 7 x 7 RA2500-3	Cable Assy.-W/R Retracting Ball End (2 Req.) Flat Head Pin (2 Req.) Cotter Pin (2 Req.) Thimble Ring Nicopress Sleeve (3 Req.) Cable (20' Req.) Fork End Strap-Tru-Lock (2 Req.)		AN960D416 AN960D10 AN310-3 AN3-7 00-W-850 09154 2504 (Formica) 0210 0209 5 16587	Washer (16 Req.) Washer (16 Req.) Nut (8 Req.) Bolt (8 Req.) Bolt (16 Req.) Pulley (8 Req.) Bracket (8 Req.) Fairlead Installation (2 Req.) Nut (4 Req.) Washer (4 Req.) Screw (4 Req.) Fairlead (4 Req.)
2	1572-18 AN664C3 AN393-9 AN100C-4 28-8-G 3/32 Dia. 7 x 7 D-376 AN381-2-6 AN140-16S RA2500-3	Cable Assy.-W/R Control (2 Req.) Ball End (2 Req.) Flat Head Pin (2 Req.) Thimble (2 Req.) Nicopress Sleeve (2 Req.) Cable (18' Req.) Spring (2 Req.) Cotter Pin (2 Req.) Turnbuckle Assy. (2 Req.) Fork End Strap-Tru-Lock (2 Req.)	6	AN365-428 AN960D416 AN525-416R22 16588 68-W-654 AN960D10 AN525-10R7 AN365-1032 0494 AN995-NC-41-2 68-W-654-1 16607 AN960D10 7 16585 & 16586	Fairlead Assy. (2 Req.) Washer (2 Req.) Screw (2 Req.) Nut (2 Req.) Fairlead (4 Req.) Lockwire (2 Req.) Bracket (2 Req.) Spacer (2 Req.) Washer (2 Req.) Pulley Bracket & Fairlead Assy. (1L & 1R) Nut (4 Req.) Washer (8 Req.) Fairlead (4 Req.) Pulley Brkt. Assy. (2 Req.) Screw (4 Req.)
3	1571-22 AN664C3 AN100C-4 28-8-G 3/32 Dia. 7 x 7 AN381-2-6 AN130-16S RA2500-3	Cable Assy.-W/R Interfloat Ball End Thimble Nicopress Sleeve Cable (22' Req.) Cotter Pin (2 Req.) Turnbuckle Assembly Fork End Strap-Tru-Lock	8	AN365-428 AN960D416 16588 16589 AN525-416R24 16765 9 16797 10 16757 11 0412006-1 0410108-2 12 16764 13 RA2500-3	Tube Assembly Horn Assy. (2 Req.) Fairing Assy. (2 Req.) Bushing Clip Fairlead Hook Fork End Strap-Tru-Lock
4	60-W-911 AN381-2-6 AN365-428 AN393-15 AN394-73 AN381-2-8	Pulley Bracket (8 Req.) Cotter Pin (8 Req.) Nut (16 Req.) Flat Head Pin (8 Req.) Flat Head Pin (8 Req.) Cotter Pin (16 Req.)			

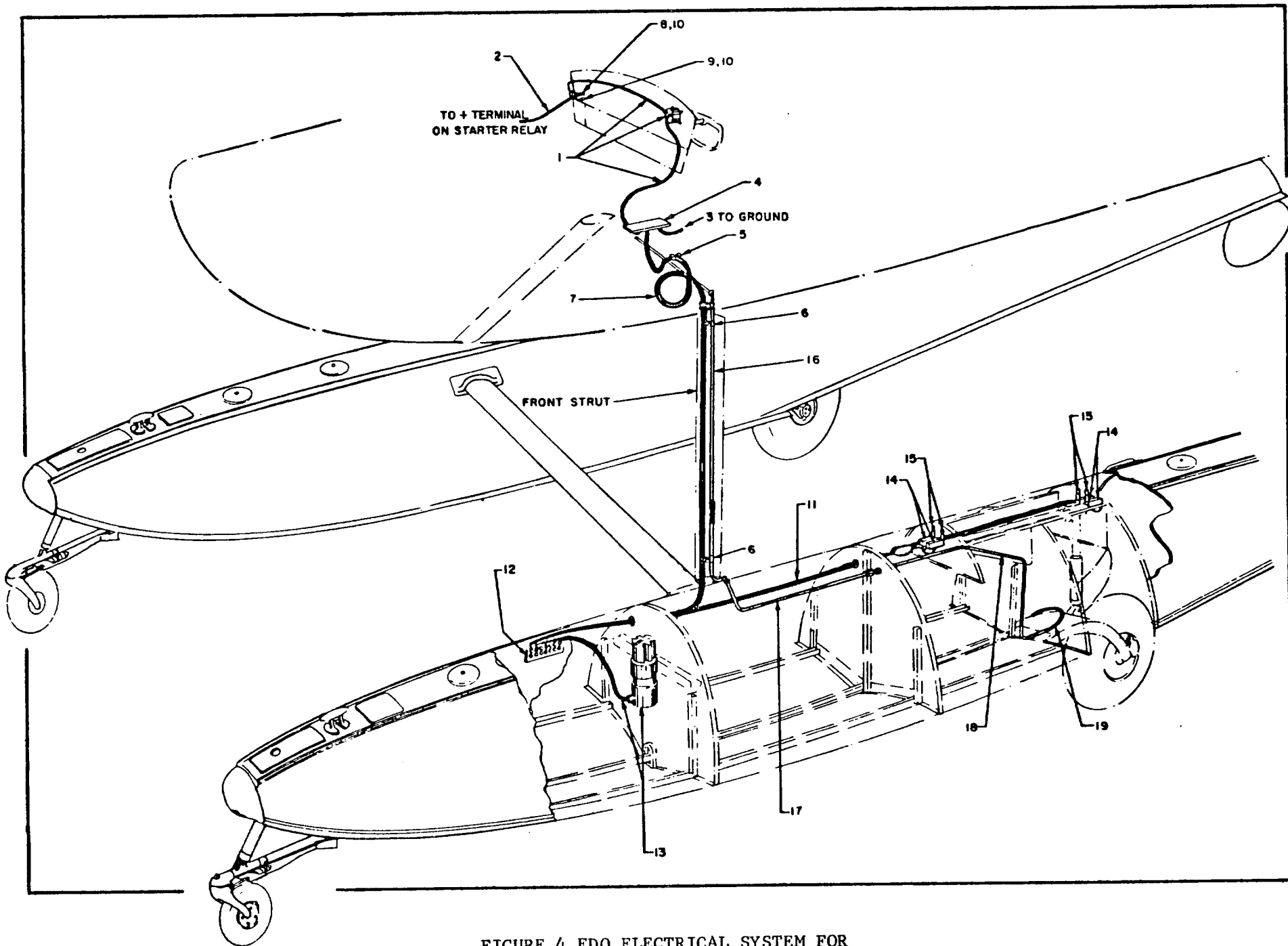


FIGURE 4 EDO ELECTRICAL SYSTEM FOR
EDO 289-2700 AMPHIBIOUS FLOATS ON CESSNA 180 AIRPLANE (INSTL. ASS'Y MOD. 318)

TABLE 4. EDO ELECTRICAL SYSTEM NO. 318
KEY TO FIGURE 4

REF. NO.	PART NUMBER	PART NAME	REF. NO.	PART NUMBER	PART NAME
1	23228	Control Box Assy.	10	PSM-10N	Circuit Breaker (1)(2 Req.)
2	23203-6	Cable	11	23203-2	Cable Assy.-Float Electrical L/H
3	23203-5	Cable-Grounding		23203-1	Cable Assy.-Float Electrical R/H
4	23229	Board Assy.-Terminal	12	20307	Terminal Strip-Float L/H
5	MS21919DF8	Clamp-Cable (4 Req.)		20308	Terminal Strip-Float R/H
6	MS21919DF4	Clamp-Cable (4 Req.)	13	A-426	Actuator Assy.
	AN-526-1032-10	Screw (8 Req.)	14	1HS6	Switch (2) (4 Req.)
	AN960D10	Washer (16 Req.)	15	MC2711B	Switch Actuator (2) (4 Req.)
	AN365-1032	Nut (8 Req.)	16	1648-503	Brake Line-Hydraulic L/H or R/H
7	23203-4	Cable Assy.-Electrical L/H	17	1648-170	Brake Line-Hydraulic L/H or R/H
	23203-3	Cable Assy.-Electrical R/H	18	1648-360	Brake Line-Hydraulic L/H or R/H
8	23257	Nameplate (Actuator L/H Wheels)	19	AN6271-4-18	Hose Assy.-Hydraulic
9	23258	Nameplate (Actuator R/H Wheels)	NOTES: (1) Spencer Thermostat Co. (2) Microswitch Corp.		

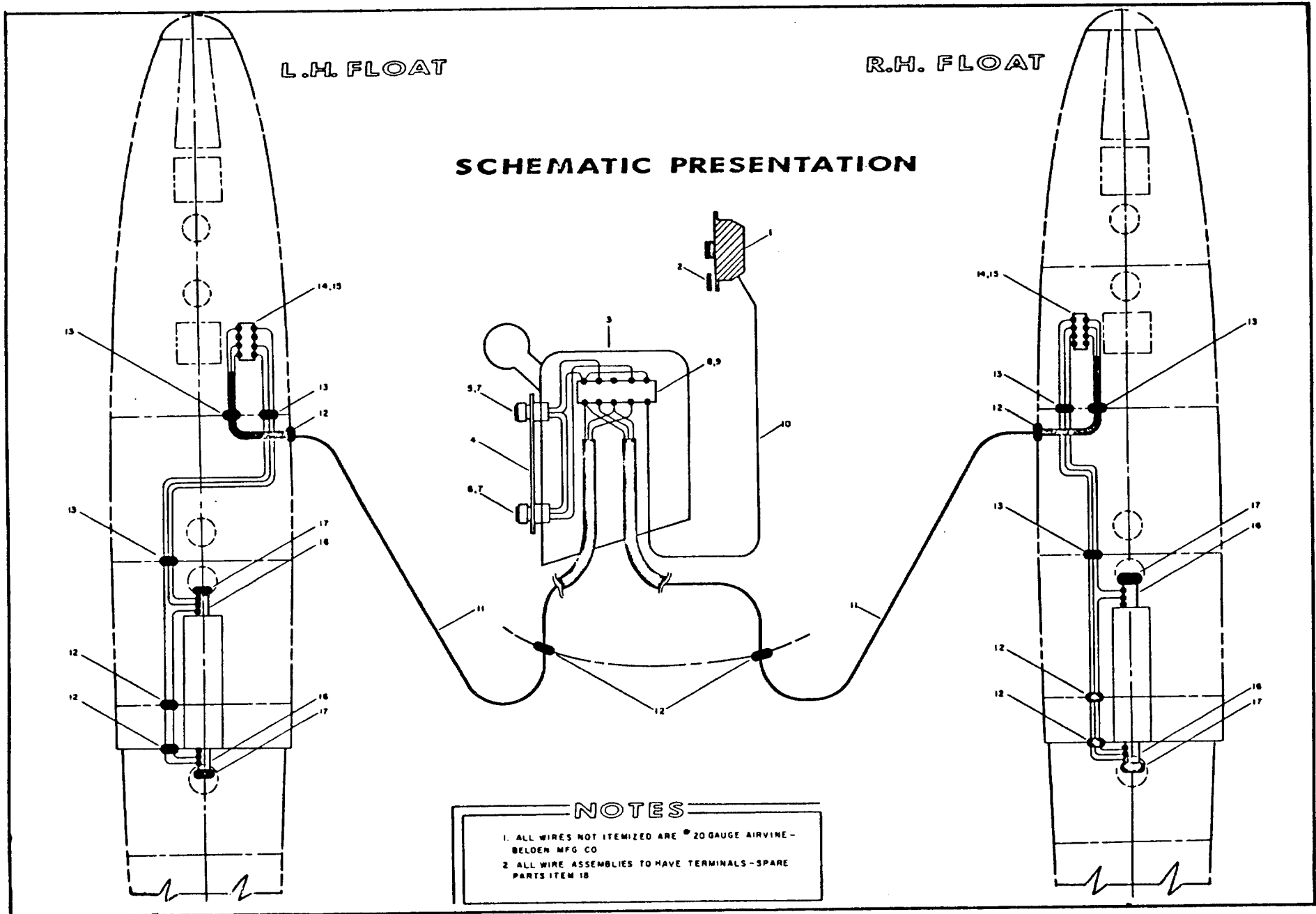


FIGURE 5 EDO ELECTRICAL SYSTEM FOR
EDO 439-2705 AMPHIBIOUS FLOATS ON CESSNA 180 AIRPLANE (INSTL. ASS'Y MOD. 493)

TABLE 5. EDO ELECTRICAL SYSTEM NO. 493
KEY TO FIGURE 5

REF. NO.	PART NUMBER	PART NAME	REF. NO.	PART NUMBER	PART NAME
1	PSM2N	Circuit Breaker (Spencer Thermostat)	11	#1896	Cable (Alpha Wire)(2 pc. 9 ft. ea.)
2	33535	Nameplate	12	AN931-3-10	Grommet (8 Req.)
3	35646	Elec. Assy.-Cockpit Control Unit (Includes Item 4-9)	13	AN931-5-13	Grommet (6 Req.)
4	35645	Placard	14	8-140	Terminal Strip (H.B. Jones)(2 Req.)
5	VM911M10	Dial Light-Blue (Dialco)	15	MSX-8-140	Terminal Strip Marker (H.B. Jones) (2 Req.)
6	VM911M4	Dial Light-Amber (Dialco)	16	1HS6	Microswitch (Minneapolis-Honeywell) (2 Req.)
7	#330	Light Bulb (Gen. Elec.)(2 Req.)	17	MC2711B	Plunger Actuator (Minneapolis- Honeywell)(4 Req.)
8	600 3/4 ST-5	Terminal Board (Kulka)	18	#31882	Terminal-Wire (Amphenol)(30 Req.)
9	XXXP (5-1)	Terminal Board Marker (Kulka)			
10	#18 Gauge	Wire-Airvine (Belden Mfg.) (1 pc. 6 ft.)			

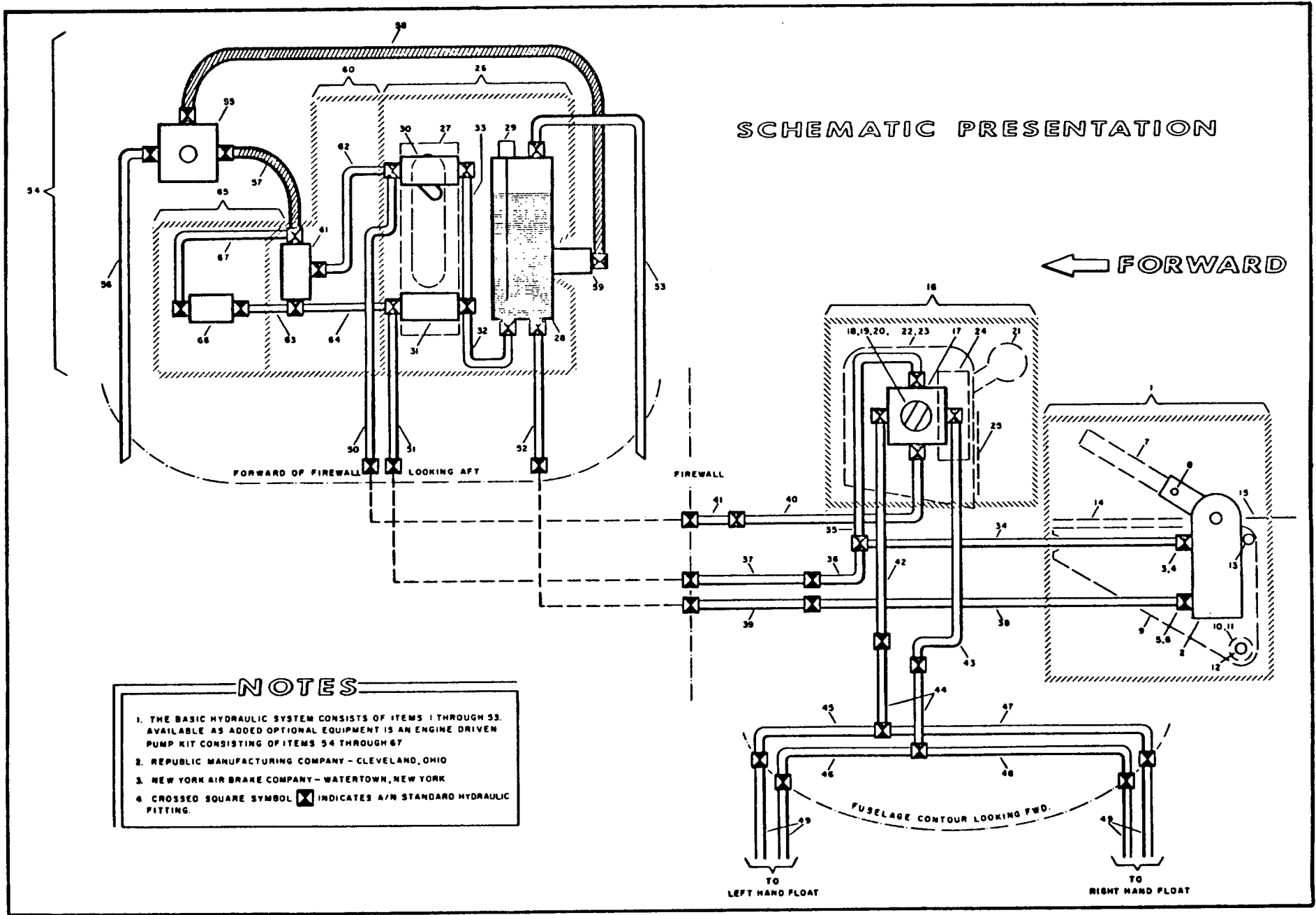


FIGURE 6 EDO HYDRAULIC SYSTEM FOR
EDO 439-2705 AMPHIBIOUS FLOATS ON CESSNA 180 AIRPLANE (INSTL. ASS^y MOD. 493)

TABLE 6. HYDRAULIC SYSTEM NO. 493
KEY TO FIGURE 6

REF. NO.	PART NUMBER	PART NAME	REF. NO.	PART NUMBER	PART NAME
1	None	Complete Hand Pump Group (Consists of Item 2-15)	29	32379	Plug - Dip Stick Filler
2	AN6201-1	Hand Pump (Alt=AN6248-2)	30	4091-1-3/8D	Strainer (See Note #2)
3	AN919-6D	Reducer	31	627-7-1/8	Relief Valve (See Note #2)
	AN815-4D	Union (With Alt. Hand Pump Only)	32	35509	Hydraulic Tube Assembly
4	AN6290-6	Gasket	33	35511	Hydraulic Tube Assembly
	AN6290-4	Gasket (With Alt. Hand Pump Only)	34	1648-192-2	Hydraulic Tube Assembly
5	AN919-11D	Reducer	35	36188	Hydraulic Tube Assembly
6	AN6290-8	Gasket	36	36218	Hydraulic Tube Assembly
7	32383	Handle	37	36220	Hydraulic Tube Assembly
8	AN23-28A	Bolt	38	36222	Hydraulic Tube Assembly
9	32385	Mounting Bracket	39	36224	Hydraulic Tube Assembly
10	32386	Spacer-Short	40	36190	Hydraulic Tube Assembly
11	32387	Spacer-Long	41	36192	Hydraulic Tube Assembly
12	AN4-62A	Bolt	42	36194	Hydraulic Tube Assembly
13	AN4-26A	Bolt	43	36196	Hydraulic Tube Assembly
14	33271	Placard-Fwd. Cover	44	1648-132-2	Hydraulic Tube Assembly (2 Req.)
15	32690	Placard-Aft Cover	45	1648-102-0	Hydraulic Tube Assembly
16	35644	Cockpit Control Unit (Includes Items 17-25)	46	1648-082-0	Hydraulic Tube Assembly
17	8541-1/8	Selector Valve (See Note #2)	47	1648-240-1	Hydraulic Tube Assembly
18	35624	Detent Cam	48	1648-220-1	Hydraulic Tube Assembly
19	35625	Bushing	49	1648-721-2	Hydraulic Tube Assembly (4 Req.)
20	35626	Washer-Special	50	1648-202-0	Hydraulic Tube Assembly
21	35621	Lever Arm	51	1648-112-0	Hydraulic Tube Assembly
22	35630	Box Assembly	52	2621-100-0	Hydraulic Tube Assembly
23	35632	Lid-Box	53	32407	Vent Tube Assembly
24	35623	Stop-Lever Guard	54	35991	Kit - Engine Driven Pump (See Note #1)
25	35645	Placard	55	67B025	Pump - Engine Driven (See Note #3)
26	35593	Hydraulic Pak Assy. (Includes Items 27-33)	56	32444	Vent Tube Assembly
27	35508	Channel-Mounting Bracket	57	MS28741-5-0230	Hydraulic Hose Assembly (Alt= AN 6271-5-23)
28	32403	Reservoir Assembly	58	MS28741-6-0320	Hydraulic Hose Assy. (Alt=AN 6271-6-32)
			59	487-6D-2	Check Valve (See Note #2)

TABLE 6. EDO HYDRAULIC SYSTEM NO. 493
KEY TO FIGURE 6 (CON'T)

REF. NO.	PART NUMBER	PART NAME	REF. NO.	PART NUMBER	PART NAME
60	36008	Unloading Valve Assy. (Includes Items 61-64)	64	35517	Hydraulic Tube Assembly
61	2-1659-11	Unloading Valve (See Note #2)	65	36009	Check Valve Assembly (Includes Item 66 & 67)
62	35513	Hydraulic Tube Assembly	66	497-4D-2	Check Valve (See Note #2)
63	35515	Hydraulic Tube Assembly	67	35519	Hydraulic Tube Assembly