

Figure #1
EDO ATTACHMENT GEAR

TABLE 1. EDO ATTACHMENT GEAR
 FOR MAULE M4 210/220 AIRPLANE ON MODEL 248B2440 FLOATS
 (INSTALLATION ASSEMBLY MODEL 248B81)

KEY TO FIGURE 1

REF. NO.	PART NAME	PART NUMBER FIGURE IN () INDICATES QTY/IN STL.
1-2	Strut - FWD L/R Bolt - Upper Bolt - Lwr. Washer Nut	248B8102 AN26-28A AN26-28A AN960PD616 (4) AN364-624A (2)
3-4	Strut - Diagonal L/R Bolt - Upper Bolt - Lwr. Washer Nut	68595 AN25-26A AN25-26A AN960PD516 (4) AN364-524A (2)
5-6	Strut - Aft. L/R Bolt - Upper Bolt - Lwr. Washer Nut	68596 AN25-26A AN25-26A AN960PD516 (4) AN364-524A (2)
7	Tie Rod Assy. - Fwd Wire Pull Fwd. - Float L/R Spacer Wire Pull Fwd. - Fus. L/R	3395-6300 (2) 3092-24 3093 (3) 248B8116
8	Tie Rod Assy. - Aft Wire Pull Aft. - Float L/R Spacer Wire Pull Aft. - Fus. L.H. Wire Pull Aft. - Fus. R.H. Wire Pull Clamp L/R Bolt Washer Nut	3395-6125 (2) 3092-24 3093 (3) 68849 68850 69297 AN4-14A (2) AN960-416 (4) AN365-428A (2)
9-10	Spreader Assy. Fwd/Aft	16550
12	Fitting - Fwd. - Float L.H.	68588-1
13	Fitting - Fwd. - Float R.H.	68588-2
14	Fitting - Aft. - Float L.H.	68589-1
15	Fitting - Aft - Float R.H.	68589-2

TABLE 1. EDO ATTACHMENT GEAR
 FOR MAULE M4 210/220 AIRPLANE ON MODEL 248B2440 FLOATS
 (INSTALLATION ASSEMBLY MODEL 248B81)

KEY TO FIGURE 1

REF. NO.	PART NAME	PART NUMBER FIGURE IN () INDICATES QTY/INSTL.
16	Fitting - Fwd. - Fus. L.H. Bolt Washer Nut	68590-1 AN6-36A AN960PD616 (2) AN365-624A
17	Fitting - Fwd. - Fus. R.H. Bolt Washer Nut	68590-2 AN6-36A AN960PD616 (2) AN365-624A
18-19	Fitting - Aft - Fus. L/R Strap L/R Bolt Washer Nut	68591 68639 (2) AN5-11A (2) AN960PD516 (4) AN365-524A (2)
20	Step Assy. L/R Bolt Washer Nut	41046 AN24-29A (2) AN960-416 (2) AN364-428A (2)
21	Step L.H. Bolt Washer Nut	5036-7 AN4-17A (2) AN960PD416 (4) AN365-428A (2)
22	Step R.H. Bolt Washer Nut	5036-8 AN4-17A (2) AN960PD416 (4) AN365-428A (2)

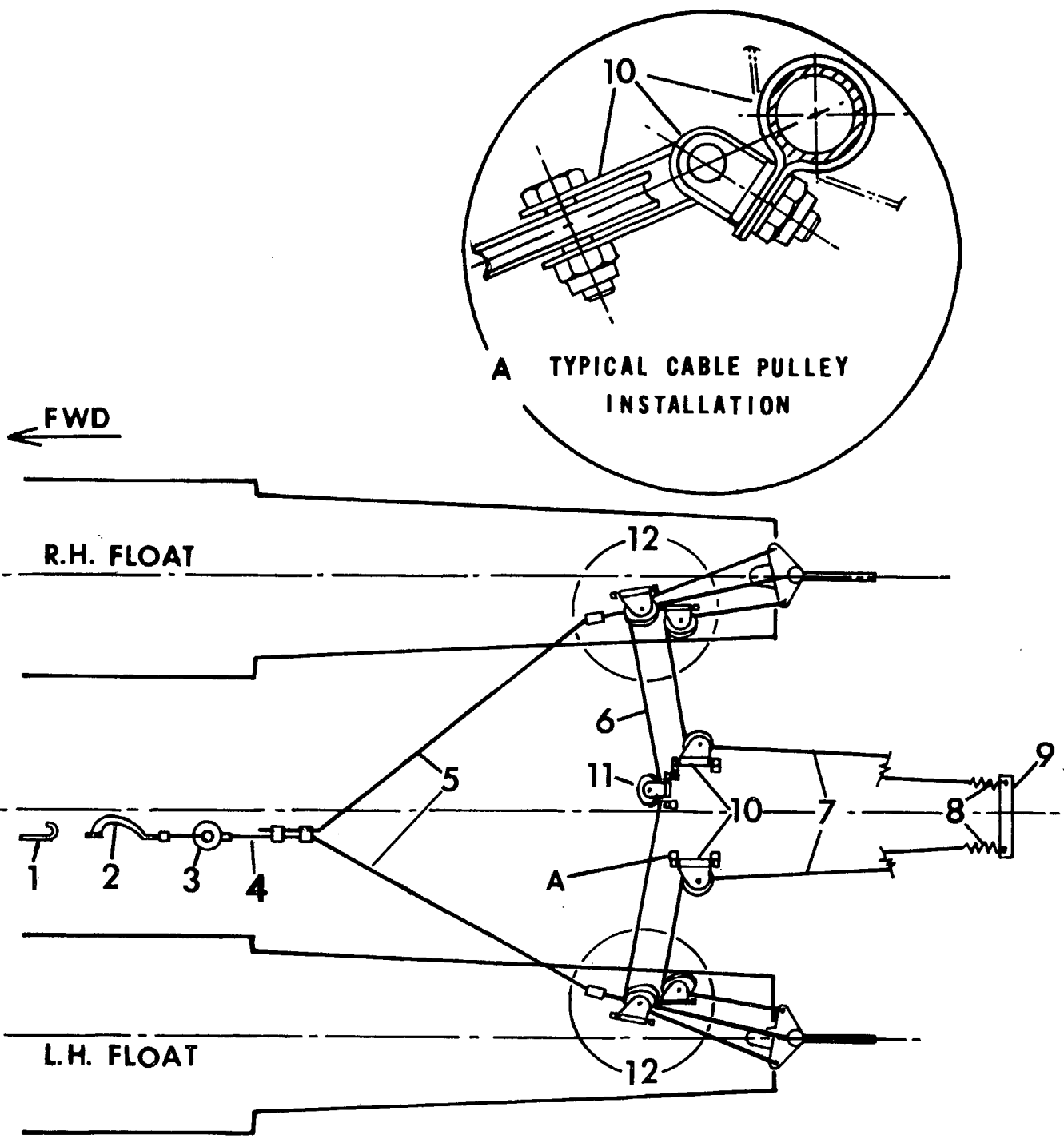


Figure #2
 EDO WATER RUDDER CONTROLS
 (Schematic)

TABLE 2. EDO WATER RUDDER CONTROLS
 FOR MAULE M4 210/220 AIRPLANE ON MODEL 248B2440 FLOATS
 (INSTALLATION ASSEMBLY MODEL 248B81)

KEY TO FIGURE 2.

REF. NO.	PART NAME	PART NUMBER FIGURE IN () INDICATES QTY/INSL.
1	Hook Assy.	47954
2	Handle Assy.	0367
3	Fairlead Tube Assy. Screw Nut Washer Washer	62753 AN526-1032-12 (3) AN365-1032A (3) AN960PD10 (3) AN970-3 (3)
4	Cable Assy. - Fwd. Retr. Nicopress Sleeve	3355-96.0-3355 28-2-G
5	Cable Assy. - Aft - Retr. Nicopress Sleeve	3343-144.0-3355 (2) 28-2-G (2)
6	Cable Assy. - Interfloat	3343-180.0-3353
7	Cable Assy. - Rudder Control	3343-180.0-3551 (2)
8	Spring	D-376 (2)
9	Tiller Arm Bolt Washer Nut	92-WS-508 AN4-6A (2) AN960PD416 (2) AN365-428A (2)
10	Pulley Bracket Assy. - Fus. Clamp	60-W-911 (2) 2258-6 (4)
11	Pulley Bracket Assy. - (Interfloat) Clamp	2256 (1) 2258-4 (2)
12	Deck Hardware Instl. Pulley Bracket Assy. Spacer Spacer Bracket Fairlead Half Washer Washer Screw Nut	16267 (2) 60-W-911 (4) 92-WS-506-1 (4) 2712 (2) 68-W-654-1 (2) 0494 (4) AN960PD416 (16) AN960PD10 (2) AN526-1032-18 (2) AN365-1032A (2)
13	Pulley (Supplied as part of item 10, 11, & 12)	0915