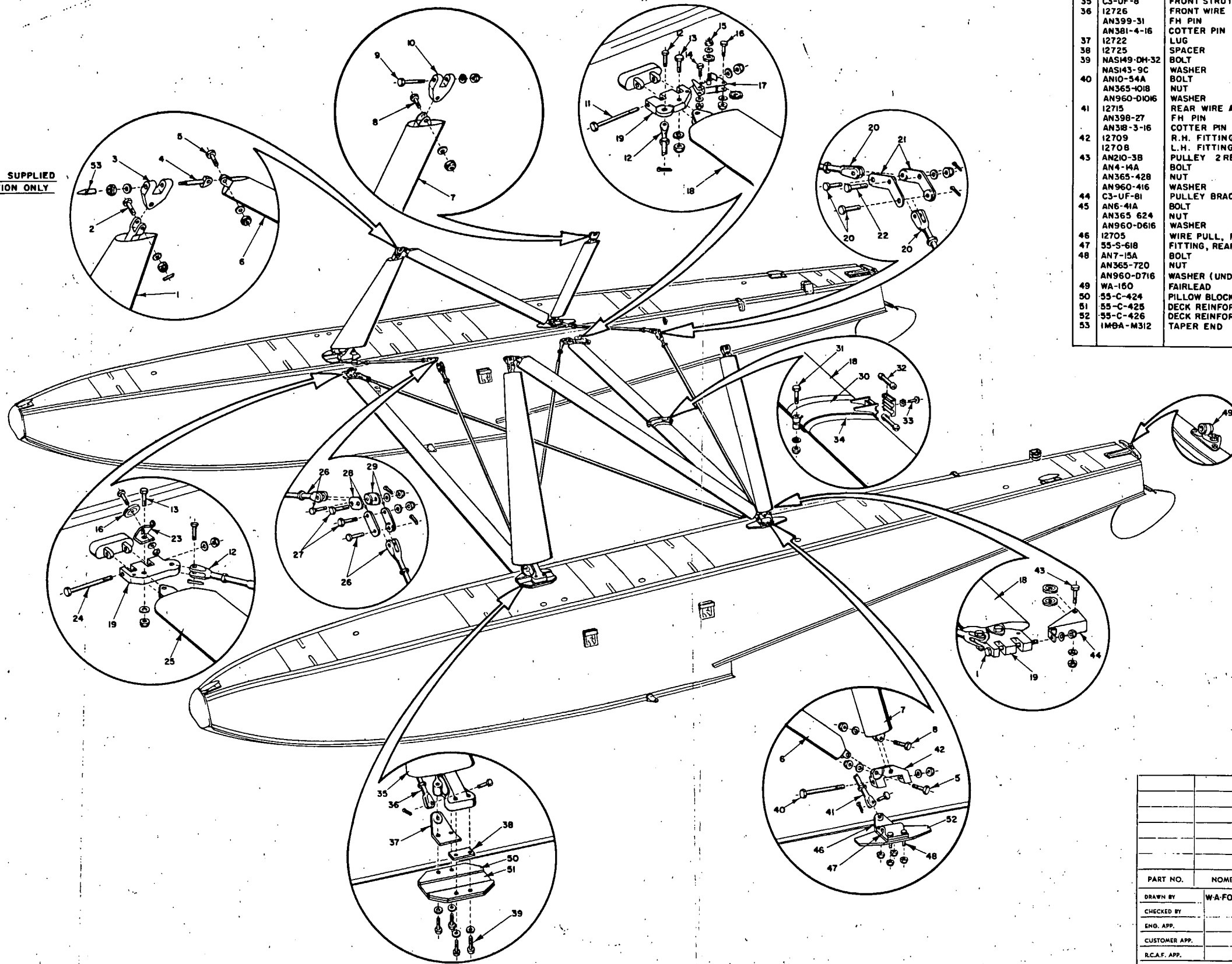


NOTE  
TAPER END - 53 SUPPLIED  
FOR INSTALLATION ONLY



ITEM	PART NO.	NOMENCLATURE	CHNG.	REVISIONS	BY	DATE	APP.
33	AN526-1032-2	SCREW	A	FIRST ISSUE			
34	AN936B-10	LOCK WASHER	B	CHNGD. ITEM 49 PART NO. TO READ WA-150	WAF	10-12-53	
35	C3-UF-8	FRONT STRUT ASSY. PORT	C	CHNGD. ITEM 49 PART NO. TO READ AN960-D1016			
36	12726	FRONT WIRE ASSEMBLY		AN960-D1016 - WASHER			
37	AN399-31	FH PIN		REFER NOTE 8 ITEM 39	W.A.F.	4-9-54	
38	12722	LUG					
39	NAS149-DH-32	SPACER					
40	NAS143-9C	BOLT					
41	AN10-54A	WASHER					
42	AN365-1018	NUT					
43	AN960-D1016	WASHER					
44	12715	REAR WIRE ASSEMBLY					
45	AN398-27	FH PIN					
46	AN318-3-16	COTTER PIN					
47	12709	R.H. FITTING					
48	12708	L.H. FITTING					
49	AN210-3B	PULLEY 2 REQ.					
50	AN4-14A	BOLT					
51	AN365-428	NUT					
52	AN960-416	WASHER					
53	C3-UF-81	PULLEY BRACKET, AFT PORT					
1	C3-UF-8-1	FRONT STRUT ASSY. ST'BD.					
2	AN10-37	BOLT					
3	AN310-10	NUT (AN381-4-28 COTTER PIN)					
4	AN960D1016	WASHER					
5	12730	FRONT FITTING, FUSE. SWIVEL					
6	12729	EYEBOLT					
7	AN365-820	NUT					
8	AN960-D816	WASHER					
9	AN6-17A	BOLT					
10	AN365-824	NUT					
11	AN960-D616	WASHER					
12	12727	DIAGONAL STRUT ASSY.					
13	12712	REAR STRUT ASSY.					
14	AN8-23A	BOLT					
15	AN365-820	NUT					
16	AN960 D816	WASHER					
17	AN10-25A	BOLT					
18	AN365-1018	NUT					
19	AN960-D1016	WASHER					
20	12721	REAR FITTING, FUSE. SWIVEL					
21	AN6-40A	BOLT					
22	AN365-624	NUT					
23	AN960-D616	WASHER					
24	12714	WIRE SPREADER ASSY.					
25	AN397-23	FH PIN					
26	AN381-3-14	COTTER PIN					
27	AN6-20A	BOLT					
28	AN365-624	NUT					
29	AN960-D616	WASHER					
30	AN365-15A	BOLT					
31	AN365-316	NUT					
32	AN960-416	WASHER					
33	AN210-3B	PULLEY					
34	AN365-428	NUT					
35	AN960-416	WASHER					
36	AN210-3B	PULLEY					
37	AN4-10A	BOLT					
38	AN365-428	NUT					
39	AN960-416	WASHER					
40	C3-UF-82	PULLEY BRACKET, REAR ST'BD.					
41	12718	REAR SPREADER ASSY.					
42	12716	FITTING, SPREADER					
43	12715	REAR WIRE ASSEMBLY					
44	AN399-49	FH PIN					
45	AN381-3-18	COTTER PIN					
46	12738	FITTING, REAR FUSE.					
47	12739	FORWARD LUG ASSEMBLY					
48	12742	AFTER LUG ASSEMBLY					
49	AN8-21A	BOLT					
50	AN363-820	NUT					
51	AN960-816	WASHER					
52	C3-UF-83	PULLEY BRACKET, FWD. ST'BD.					
53	AN6-40A	BOLT					
54	AN365-624	NUT					
55	AN960-D616	WASHER					
56	12717	FRONT SPREADER ASSEMBLY					
57	12726	FRONT WIRE ASSEMBLY					
58	AN399-55	FH PIN					
59	AN381-4-16	COTTER PIN					
60	AN10-24A	BOLT					
61	AN365-1018	NUT					
62	AN960-D1016	WASHER					
63	12734	FORWARD LUG					
64	12735	AFTER LUG					
65	3MBA-M284	FAIRLEAD ASSEMBLY					
66	AN3-13A	BOLT					
67	AN365-1032	NUT					
68	AN960-10	WASHER					
69	NO. 5	FAIRLEAD 2 REQ.					

PART NO.	NOMENCLATURE	NO. REQD.	STOCK SIZE	MATL.	MATL. SPEC.	HEAT TREAT	FINISH
W.A.FOGG 28-4-53							
TOLERANCES EXCEPT AS NOTED: ANGLES ± 1/2° FRACTIONS ± 1/32" DECIMALS ± .010"							
<b>MACDONALD BROS. AIRCRAFT LTD.</b>							
WINNIPEG — MANTOBA							
TITLE: INSTALLATION OF "EDO" 55-7170A FLOAT TO DMC3 "OTTER" A/C							
REQD. FOR				DRAWING NO.		CODE	
				4 MBA M305			