

Figure 1-Model 88-1650 Float Installation for Cessna-120-140

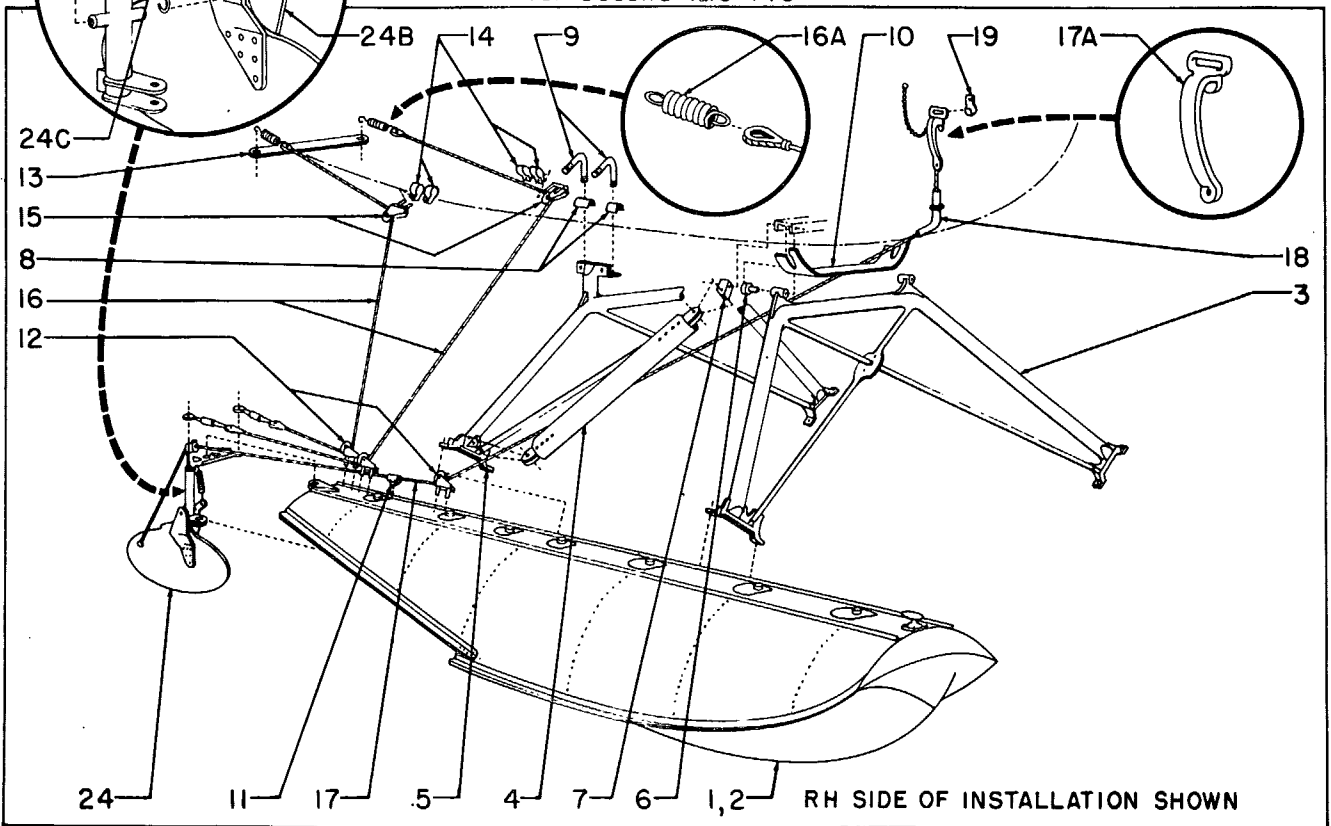


Figure 2-Model 89-2000 Float Installation for Piper PA-12

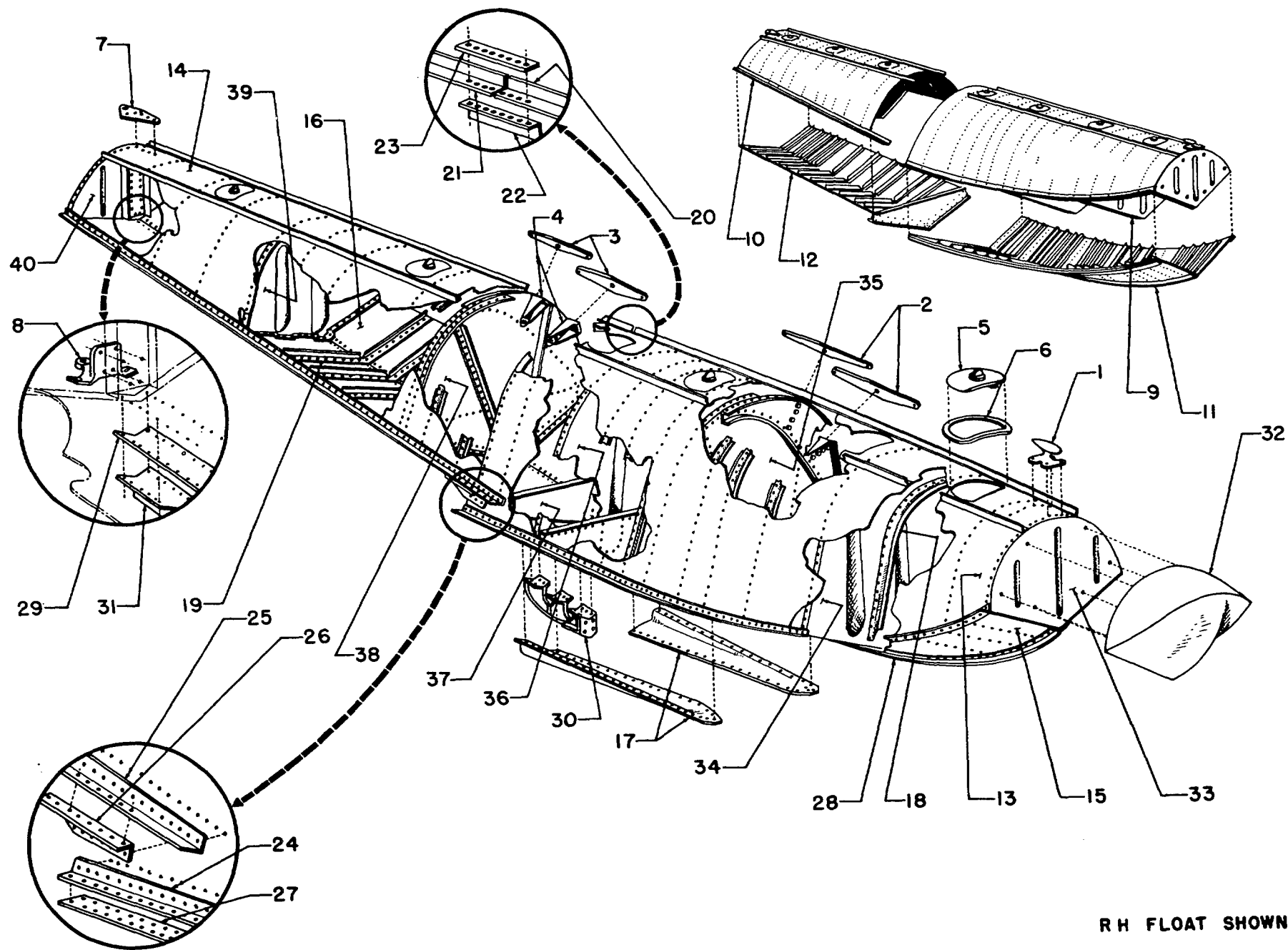


Ref. No.	Part Number	Part Name
1	88-A-010L	Float Assembly - Model 88-1650 LH <u>See Figure 3 for parts.</u>
2	88-A-010R	Float Assembly - Model 88-1650 RH (less water rudder assembly and control parts) <u>See Figure 3 for parts.</u>
3	88-S-128	Strut Assembly - Front Outboard
4	88-S-127	Strut Assembly - Diagonal
5	88-S-129L/R	Strut Assembly - Rear Outboard
6	88-S-141L/R	Strut Assembly - Front Inboard
7	88-S-142L/R	Strut Assembly - Rear Inboard
8	88-S-168	Link - Front
9	88-S-169L/R	Link - Rear
10	88-S-156	Fitting - Fuselage Front Inboard
11	88-S-134	Fitting - Fuselage Rear Inboard
12	88-S-145L/R	Fitting - Fuselage Front Outboard
13	88-S-151	Eyebolt-Special
14	88-S-163L/R	Step Assembly
15	88-S-161	Covers
16	68-W-654	Fairlead Assembly
17	60-W-911	Pulley Installation
18	88-S-160	Arm Installation - Water Rudder Control
19	0929-4	Cable Assembly - Water Rudder Control
19A	D-376	Spring - Control Cable
20	0928-5	Cable Assembly - Water Rudder Lift
20A	0367	Handle - Lift Cable
21	60-W-911	Pulley Installation
22	88-WS-504	Guide - Lift Cable
23	88-WS-503	Hook - Lift Cable Handle
24	88-W-070-10	Rudder Assembly - Water
24A	88-W-075	Post Assembly - Water Rudder
24B	88-W-078	Blade Assembly - Water Rudder
24C	88-W-079	Spring - Water Rudder

Key to Figure 1

Ref. No.	Part Number	Part Name
1	89-A-011L	Float Assembly - Model 89-2000 LH <u>See Figure 3 for parts.</u>
2	89-A-011R	Float Assembly - Model 89-2000 RH (less water rudder assembly and control parts) <u>See Figure 3 for parts.</u>
3	89-S-111	Truss Assembly - Front
4	89-S-144	Strut Assembly - Diagonal
5	89-S-112	Truss Assembly - Rear
6	89-S-118	Bushing - Eccentric
7	89-S-138	Fitting - Fuselage Diagonal Strut Connecting
8	89-S-147	Plate - Saddle
9	89-S-146	Bolt - Angle
10	89-S-165	Covers
11	68-W-654	Fairlead Assembly
12	60-W-911	Pulley Installation
13	92-WS-508	Arm - Water Rudder Control
14	89-WS-501-2	Clamp - Pulley Attaching
15	60-W-911	Pulley Installation
16	0929-3	Cable Assembly - Water Rudder Control
16A	D-376	Spring - Control Cable
17	0928-4	Cable Assembly - Water Rudder Lift
17A	0367	Handle - Lift Cable
18	89-WS-501-3	Guide - Lift Cable
19	89-WS-501-4	Hook - Lift Cable
24	88-W-070-10	Rudder Assembly - Water
24A	88-W-075	Post Assembly - Water Rudder
24B	88-W-078	Blade Assembly - Water Rudder
24C	88-W-079	Spring - Water Rudder

Key to Figure 2



R H FLOAT SHOWN

Figure 3-Float Parts



Ref. No.	Part Number	Part Name	
	Model 88-1650	Model 89-2000	
1	88-M-096	88-M-096	Cleat - Mooring
2	88-C-060-1	88-C-060-1	Pad - Strut Attaching Forward
3	88-C-060-2	88-C-060-2	Pad - Strut Attaching Aft
4	89-B-032-7	89-B-032-7	Fitting - Strut Attaching (Forward and Aft)
5	88-M-092	88-M-092	Cover Assembly - Deck Handhole
6	0949	0949	Gasket - Handhole Cover
7	88-W-072-3	88-W-072-3	Bracket - Water Rudder Deck (R float)
8	88-W-071	88-W-071	Bracket - Water Rudder Bottom (R float)
9	88-A-010-1L/R	89-A-011-1L/R	Top Assembly - Forward (L or R float)
10	88-A-010-2L/R	89-A-011-2L/R	Top Assembly - Aft (L or R float)
11	88-A-010-3	89-A-011-3	Bottom Assembly - Forward
12	88-A-010-4	89-A-011-4	Bottom Assembly - Aft
13	88-A-012-1	89-A-013-1	Skin - Forward Top
14	88-A-012-2	89-A-013-2	Skin - Aft Top
15	88-A-012-3L/R	89-A-013-3L/R	Skin - Forward Bottom
16	88-A-012-4	89-A-013-4	Skin - Aft Bottom
17	88-K-060L/R	89-K-061L/R	Scallop
18	88-K-050	88-K-050	Stiffener - Top (oversize)
19	88-K-051	88-K-051	Stiffener - Bottom (oversize)
20	88-A-010-5L/R	89-A-011-5L/R	Rail - Fwd Deck
21	88-A-010-6L/R	89-A-011-6L/R	Rail - Aft Deck
22	88-A-010-8	88-A-010-8	Splice - Deck Rail
23	88-A-010-9	88-A-010-9	Plate - Deck Rail Splice
24	88-K-054-1L/R	88-K-054-3L/R	Chine - Forward
25	88-K-054-2L/R	88-K-054-4L/R	Chine - Aft
26	88-A-010-10L/R	88-A-010-10L/R	Bracket - Chine
27	88-A-010-7	89-A-011-7	Strip - Chine Reinforcing
28	88-K-052-1	88-K-052-2	Keel - Forward
29	88-K-053-1	88-K-053-2	Keel - Aft
30	88-M-711	89-M-091	Skeg
31	88-W-072-4	88-W-072-4	Skid - Stern (L float)
32	88-M-093	88-M-093	Bumper Assembly - Bow
33	88-B-030	88-B-030	Bulkhead - Station 1
34	88-B-031	88-B-031	Bulkhead - Station 2
35	88-B-040L/R	89-B-032L/R	Bulkhead Assembly - Station 3 (L or R float)
36	—	89-B-033	Bulkhead Assembly - Station 3A
37	88-B-034	88-B-034	Step Assembly
38	88-B-039L/R	89-B-035L/R	Bulkhead Assembly - Station 4 (L or R float)
39	88-B-036	88-B-036	Bulkhead - Station 5
40	88-B-037	88-B-037	Transom Assembly

Key to Figure 3