

Figure 1- Model 88-1650 Float Installation for Cessna 120-140, (1948)

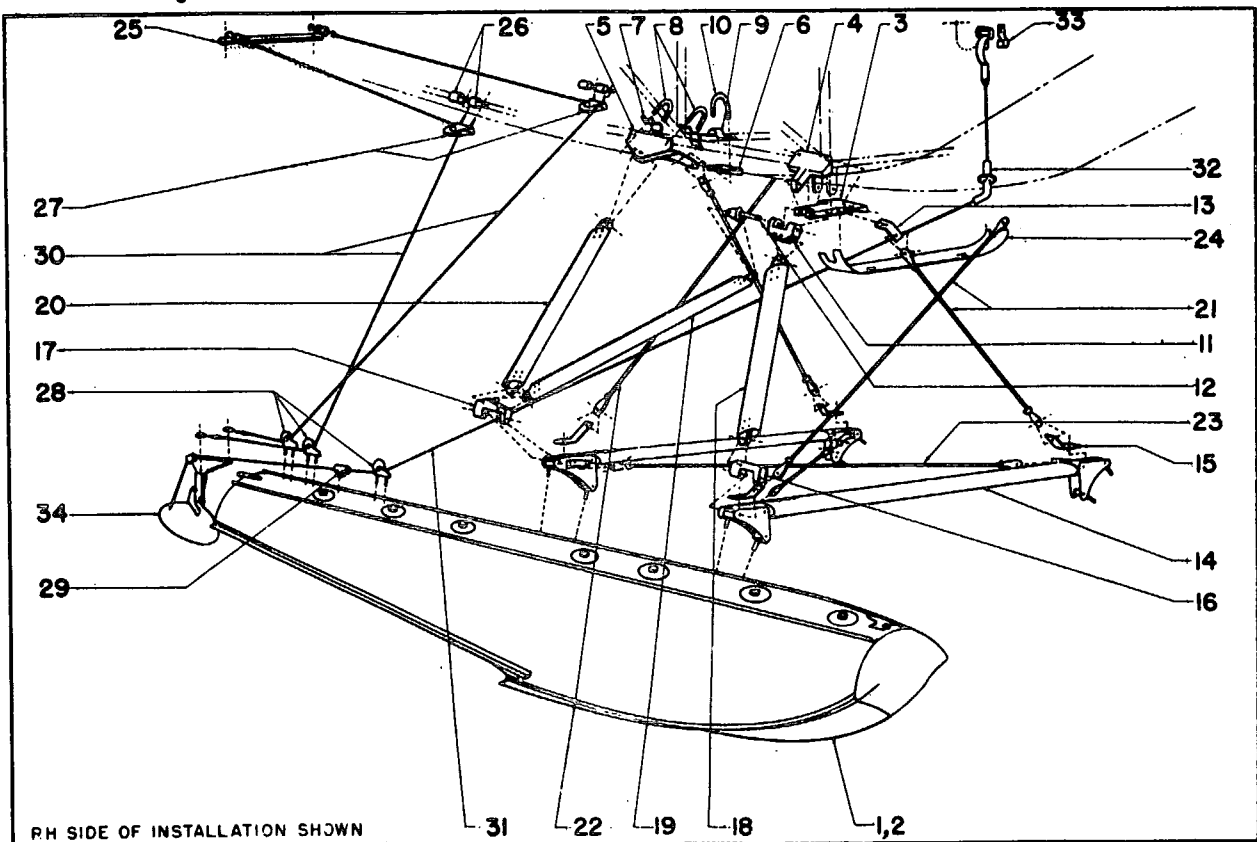


Figure 2- Model 89-2000 Float Installation for Piper PA-12, (1948)

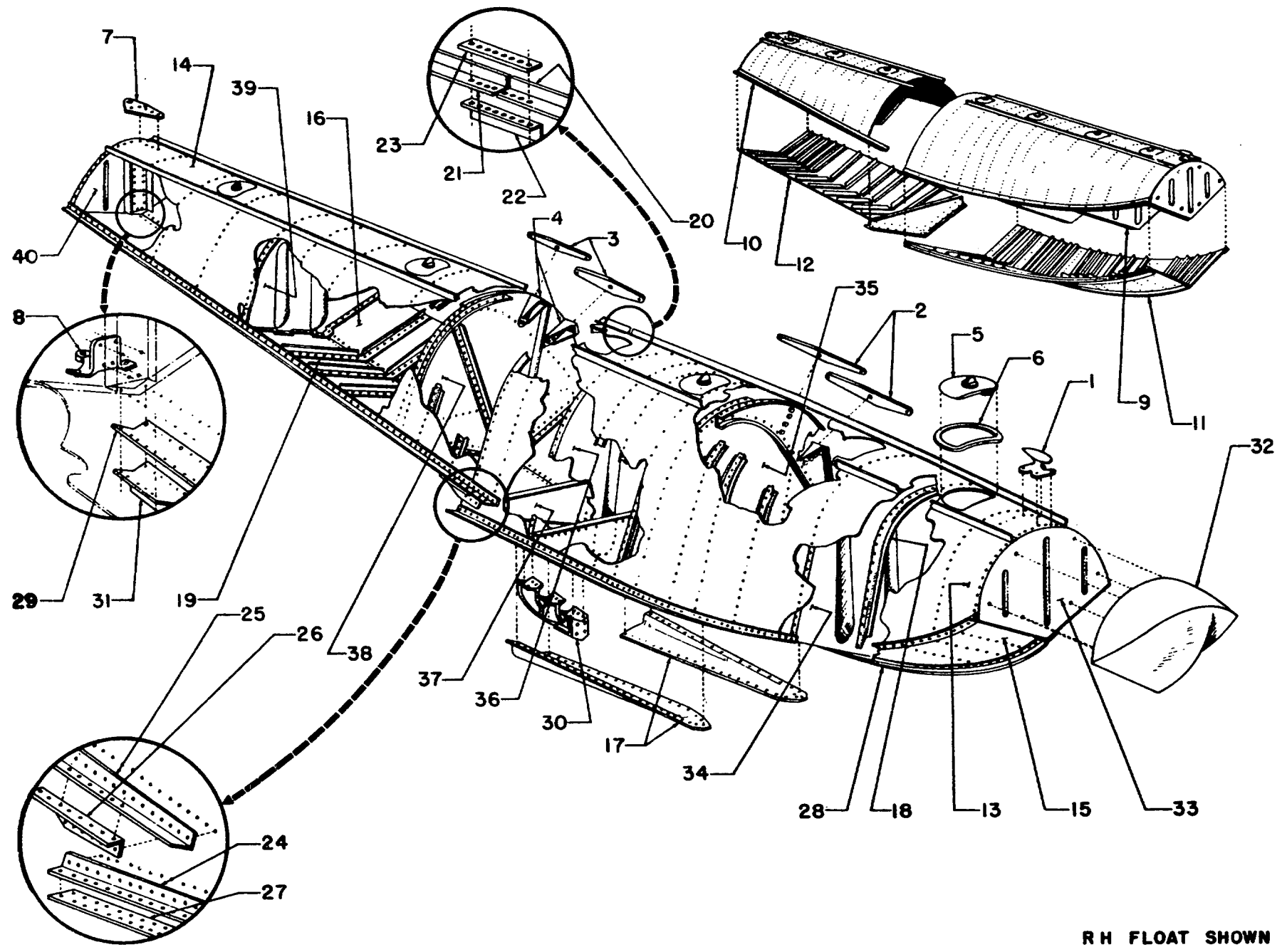
Ref. No.	Part Number	Part Name
1	88-A-010L	Float Assembly - Model 88-1650 LH See Figure 3 for parts,
2	88-A-010R	Float Assembly - Model 88-1650 RH (less water rudder assembly and control parts) See figure 3 for parts,
3	88-S-197-3	Plate - Fuselage Front Wirepull Doubler
4	88-S-197-1	Wirepull - Fuselage Front
5	88-S-197-2	Spacer - Fuselage Front Wirepull
6	88-S-198-1	Wirepull - Fuselage Rear
7	88-S-198-2	Spacer - Fuselage Rear Wirepull
8	88-S-196L/R	Fitting - Fuselage Front Outboard
9	** 0441115 (Cessna)	Wedge
10	88-S-151	Eyebolt - Special
11	88-S-164	Washer - Special Shim
12	88-S-199-1	Cover - Fuselage Front
13	88-S-199-2	Cover - Fuselage Rear
14	AN820-4	Cap - Flared Tube Fitting
15	88-C-702	Spreader Assembly - Float
	88-C-702-1	Tube - Spreader
	88-C-704	Fitting - Spreader End
	88-C-705	Plate - Spreader End
	88-C-708-1.5-34	Wirepull - Spreader Side
	88-C-706	Eyebolt
	88-C-708-1.5-34	Wirepull - Spreader Top
16	88-S-194	Fitting - Float Front Swivel
17	88-S-195	Fitting - Float Rear Swivel
18	88-S-128	Strut Assembly - Front
19	88-S-127	Strut Assembly - Diagonal
20	88-S-163L/R	Step Assembly
21	88-S-129L/R	Strut Assembly - Rear
22	92-S-200-11	Wire Assembly - Brace
23	92-S-200-10	Wire Assembly - Spreader
24	88-S-160-1	Arm - Water Rudder Control
25	88-S-160-2	Spacer - Water Rudder Control Arm
26	60-W-911	Pulley Installation - Fuselage
27	60-W-911	Pulley Installation - Float Deck
28	68-W-654	Fairlead Assembly - Float Deck
29	0929-4	Cable Assembly - Water Rudder Control
30	D-376	Spring - Control Cable
31	0928-5	Cable Assembly - Water Rudder Lift
	0367	Handle - Lift Cable
32	88-Ws-504	Guide - Lift Cable
33	88-Ws-505	Hook - Lift Cable
34	88-W-070-10	Rudder Assembly - Water
	88-W-075	Post Assembly - Water Rudder
	88-W-078	Blade Assembly - Water Rudder
	88-W-079	Spring - Water Rudder

** Existing airplane part.

Key to Figure 1

Ref. No.	Part Number	Part Name
1	89-A-011L	Float Assembly - Model 89-2000 LH See Figure 3 for parts,
2	89-A-011R	Float Assembly - Model 89-2000 RH (less water rudder assembly and control parts) See Figure 3 for parts,
3	89-S-203L/R	Fitting - Fuselage Front Bottom
4	89-S-204L/R	Fitting - Fuselage Front Side
5	89-S-187-1	Fitting Assembly - Fuselage Rear
6	89-S-187-6	Wedge - Fuselage Rear Fitting
7	89-S-189	Plate - Saddle
8	89-S-190	Bolt - Angle
9	89-S-188	Plate - Saddle
10	89-S-191	Bolt - U
11	89-S-185	Fitting - Fuselage Front Swivel
12	60-S-935	Eyebolt - Special
13	88-C-708-2.5-20	Wirepull - Fuselage Front Fitting
14	89-C-703	Spreader Assembly - Float
	89-C-703-1	Tube-Spreader
	88-C-704	Fitting - Spreader End
	88-C-705	Plate - Spreader End
	88-C-708-3.8-42	Wirepull - Spreader Side
	88-C-706	Eyebolt
15	88-C-708-1.5-24	Wirepull - Spreader Top
16	89-S-183	Fitting - Float Front Swivel
17	89-S-184	Fitting - Float Rear Swivel
18	89-S-181	Strut Assembly - Front
19	89-S-144	Strut Assembly - Diagonal
20	89-S-182	Strut Assembly - Rear
21	92-S-200-4	Wire Assembly - Front Cross
22	92-S-200-2	Wire Assembly - Rear Cross
23	92-S-200-9	Wire Assembly - Spreader
24	89-S-205	Cover
25	92-Ws-508	Arm - Water Rudder Control
26	89-Ws-501-2	Clamp - Pulley Attaching
27	60-W-911	Pulley Installation - Fuselage
28	60-W-911	Pulley Installation - Float Deck
29	68-W-654	Fairlead Assembly - Float Deck
30	0929-3	Cable Assembly - Water Rudder Control
	D-376	Spring - Control Cable
31	0928-4	Cable Assembly - Water Rudder Lift
	0367	Handle - Lift Cable
32	89-Ws-501-3	Guide - Lift Cable
33	89-Ws-501-4	Hook - Lift Cable
34	88-W-070-10	Rudder Assembly - Water
	88-W-075	Post Assembly - Water Rudder
	88-W-078	Blade Assembly - Water Rudder
	88-W-079	Spring - Water Rudder

Key to Figure 2



RH FLOAT SHOWN

Figure 3-Float Parts



Ref. No.	Part Number	Part Name
	Model 88-1650	Model 89-2000
1	88-M-096	88-M-096
2	88-C-060-1	88-C-060-1
3	88-C-060-2	88-C-060-2
4	89-B-032-7	89-B-032-7
5	88-M-092	88-M-092
6	0949	0949
7	88-W-072-3	88-W-072-3
8	88-W-071	88-W-071
9	88-A-010-1L/R	89-A-011-1L/R
10	88-A-010-2L/R	89-A-011-2L/R
11	88-A-010-3	89-A-011-3
12	88-A-010-4	89-A-011-4
13	88-A-012-1	89-A-013-1
14	88-A-012-2	89-A-013-2
15	88-A-012-3L/R	89-A-013-3L/R
16	88-A-012-4	89-A-013-4
17	88-K-060L/R	89-K-061L/R
18	88-K-050	88-K-050
19	88-K-051	88-K-051
20	88-A-010-5L/R	89-A-011-5L/R
21	88-A-010-6L/R	89-A-011-6L/R
22	88-A-010-8	88-A-010-8
23	88-A-010-9	88-A-010-9
24	88-K-054-1L/R	88-K-054-3L/R
25	88-K-054-2L/R	88-K-054-4L/R
26	88-A-010-10L/R	88-A-010-10L/R
27	88-A-010-7	89-A-011-7
28	88-K-052-1	88-K-052-2
29	88-K-053-1	88-K-053-2
30	88-M-711	89-M-091
31	88-W-072-4	88-W-072-4
32	88-M-093	88-M-093
33	88-B-030	88-B-030
34	88-B-031	88-B-031
35	88-B-040L/R	89-B-032L/R
36	-	89-B-033
37	88-B-034	88-B-034
38	88-B-039L/R	89-B-035L/R
39	88-B-036	88-B-036
40	88-B-037	88-B-037
		Cleat - Mooring
		Pad - Strut Attaching Forward
		Pad - Strut Attaching Aft
		Fitting - Strut Attaching (Forward and Aft)
		Cover Assembly - Deck Handhole
		Gasket - Handhole Cover
		Bracket - Water Rudder Deck (R float)
		Bracket - Water Rudder Bottom (R float)
		Top Assembly - Forward (L or R float)
		Top Assembly - Aft (L or R float)
		Bottom Assembly - Forward
		Bottom Assembly - Aft
		Skin - Forward Top
		Skin - Aft Top
		Skin - Forward Bottom
		Skin - Aft Bottom
		Scallop
		Stiffener - Top (oversize)
		Stiffener - Bottom (oversize)
		Rail - Fwd Deck
		Rail - Aft Deck
		Splice - Deck Rail
		Plate - Deck Rail Splice
		Chine - Forward
		Chine - Aft
		Bracket - Chine
		Strip - Chine Reinforcing
		Keel - Forward
		Keel - Aft
		Skeg
		Skid - Stern (L float)
		Bumper Assembly - Bow
		Bulkhead - Station 1
		Bulkhead - Station 2
		Bulkhead Assembly - Station 3 (L or R float)
		Bulkhead Assembly - Station 3A
		Step Assembly
		Bulkhead Assembly - Station 4 (L or R float)
		Bulkhead - Station 5
		Transom Assembly

Key to Figure 3