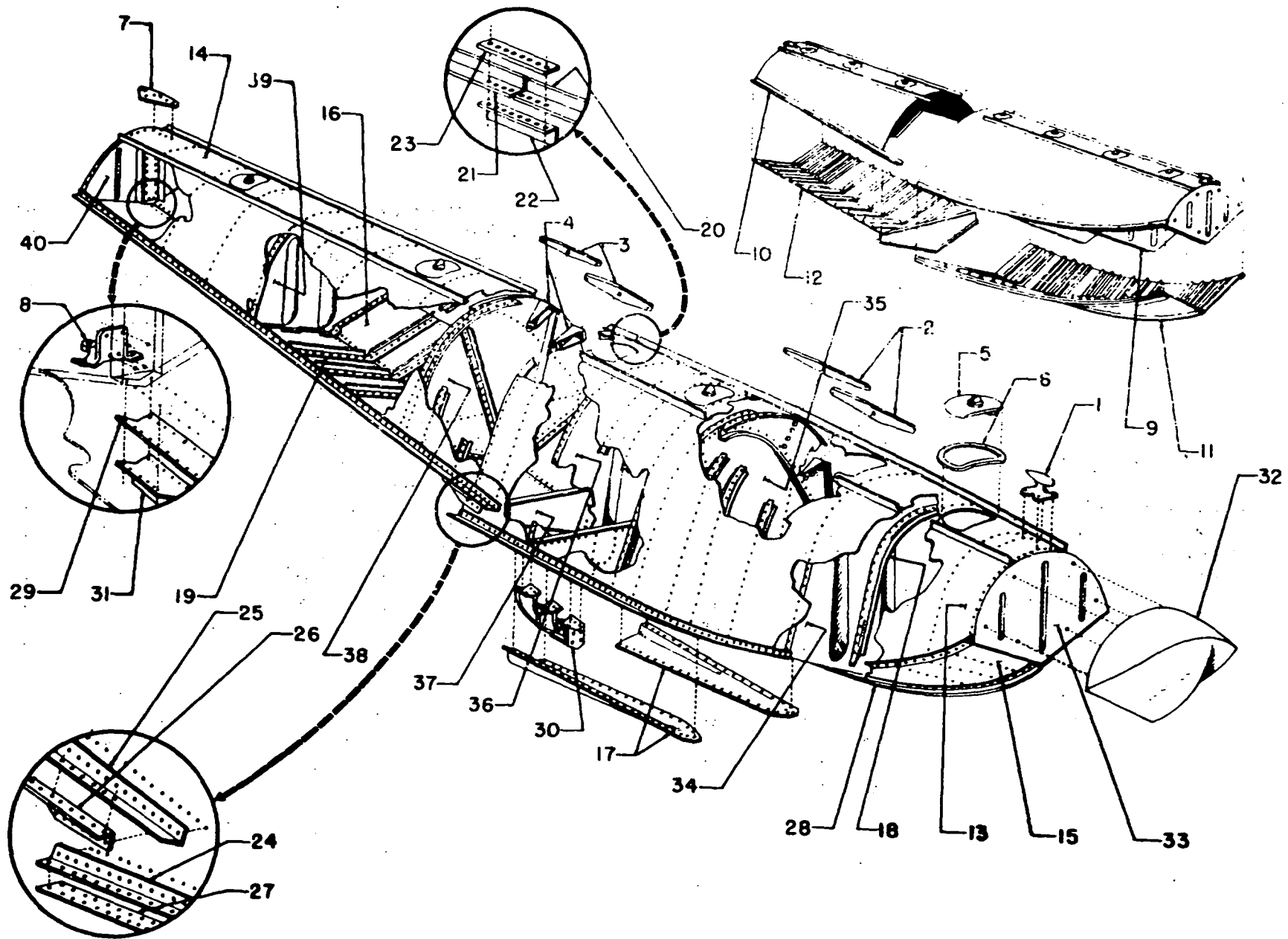


Figure 1 - Model 89-2000 Float Installation for Aeronca 15

KEY TO FIGURE 1

REF. NO.	PART NUMBER	PART NAME	REF. NO.	PART NUMBER	PART NAME
1	89-A-011L	Float Assembly - Model 89-2000 LH <u>See Figure 2 for parts.</u>	23	5-503 (Aeronca)	Cover - Fuselage Front Bottom
2	89-A-011R	Float Assembly - Model 89-2000 RH (less water rudder assembly and control parts) <u>See Figure 2 for parts.</u>	24	2-1428 (Aeronca)	Cover - Fuselage Front Side
3	000657	Fitting - Fuselage Front LH Swivel	25	1-617 (Aeronca)	Ring - Reinforcing
4	000658	Fitting - Fuselage Front RH Swivel	26	1-618 (Aeronca)	Cover - Fuselage Rear Handhole
5	000659	Wirepull - Fuselage Front LH Fitting	27	92-WS-508	Arm - Water Rudder Control
6	000660	Wirepull - Fuselage Front RH Fitting	28	89-WS-501-2	Clamp - Pulley Attaching
7	000680	Fitting Assembly - Fuselage Rear LH	29	60-W-911	Pulley Assembly - Fuselage Pulley
8	000681	Fitting Assembly - Fuselage Rear RH	30	524451	Pulley Assembly - Float Deck
9	000669	Spacer	31	60-W-911	Fairlead Assembly - Float Deck
10	AN741-T6P	Clamp - Tube	32	68-W-654	Cable Assembly - Water Rudder Control
11	000667	Plate - Saddle	33	0929	Rudder Control Spring - Control Cable
12	000666	Bolt - Angle	34	D-376	Cable Assembly - Water Rudder Lift
13	89-C-703	Spreader Assembly - Float Tube Spreader	35	0928	Handle - Lift Cable
	89-C-703-1	Fitting - Spreader End	36	0367	Guide - Lift Cable
	88-C-704	Plate - Spreader End		0001472	Hook - Lift Cable
	88-C-705	Wirepull - Spreader Side		0001474	Rudder Assembly - Water Post Assembly - Water Rudder
	88-C-708-3.8-42	Spacer		88-W-070-2	Blade Assembly - Water Rudder
	88-C-710	Eyebolt		88-W-075	Spring - Water Rudder
14	88-C-708-1.9-27	Wirepull - Spreader Top		88-W-078-1	Spacer
15	000656	Fitting - Float Front Swivel		88-W-079	Bushing
16	000661	Fitting - Float Rear LH Swivel		88-W-077-1	Blade Bracket LH
17	000662	Fitting - Float Rear RH Swivel		88-W-077-2	Blade Bracket RH
18	000676	Strut Assembly - Front		88-W-076-1	Water Rudder Blade Stop
19	000664	Strut Assembly - Diagonal		88-W-076-2	Fairlead
20	000665	Strut Assembly - Rear		88-W-075-6	
21	92-S-200-4	Wire Assembly - Front and Rear cross		38-081-1	
22	92-S-200-9	Wire Assembly - Float Spreader			



RH FLOAT SHOWN

Figure 2-Float Parts



Ref. No.	Part Number	Part Name
1	88-M-096	Cleat - Mooring
2	88-C-060-1	Pad - Strut Attaching Forward
3	88-C-060-2	Pad - Strut Attaching Aft
4	89-B-032-7	Fitting - Strut Attaching (Forward and Aft)
5	88-M-092	Cover Assembly - Deck Handhole
6	0949	Gasket - Handhole Cover
7	88-W-072-3	Bracket - Water Rudder Deck (R float)
8	88-W-071	Bracket - Water Rudder Bottom (R float)
9	89-A-011-1L/R	Top Assembly - Forward (L or R float)
10	89-A-011-2L/R	Top Assembly - Aft (L or R float)
11	89-A-011-3	Bottom Assembly - Forward
12	89-A-011-4	Bottom Assembly - Aft
13	89-A-013-1	Skin - Forward Top
14	89-A-013-2	Skin - Aft Top
15	89-A-013-3L/R	Skin - Forward Bottom
16	89-A-013-4	Skin - Aft Bottom
17	89-K-061L/R	Scallop
18	88-K-050	Stiffener - Top (oversize)
19	88-K-051	Stiffener - Bottom (oversize)
20	89-A-011-5L/R	Rail - Fwd Deck
21	89-A-011-6L/R	Rail - Aft Deck
22	88-A-010-8	Splice - Deck Rail
23	88-A-010-9	Plate - Deck Rail Splice
24	88-K-054-3L/R	Chine - Forward
25	88-K-054-4L/R	Chine - Aft
26	88-A-010-10L/R	Bracket - Chine
27	89-A-011-7	Strip - Chine Reinforcing
28	88-K-052-2	Keel - Forward
29	88-K-053-2	Keel - Aft
30	89-M-091	Skeg
31	88-W-072-4	Skid - Stern (L float)
32	88-M-093	Bumper Assembly - Bow
33	88-B-030	Bulkhead - Station 1
34	88-B-031	Bulkhead - Station 2
35	89-B-032L/R	Bulkhead Assembly - Station 3 (L or R float)
36	89-B-033	Bulkhead Assembly - Station 3A
37	88-B-034	Step Assembly
38	89-B-035L/R	Bulkhead Assembly - Station 4 (L or R float)
39	88-B-036	Bulkhead - Station 5
40	88-B-037	Transom Assembly

Key to Figure 2