

Figure #1
EDO ATTACHMENT GEAR

(CONFIGURATION "B")

TABLE 1. EDO ATTACHMENT GEAR (CONFIGURATION "B")
 FOR CHAMPION CITABRIA LEAF & OLEO GEAR AIRPLANES ON MOD. 089/089A-2000 FLOATS
 (Installation Assembly Model 089/089A31 & 32)

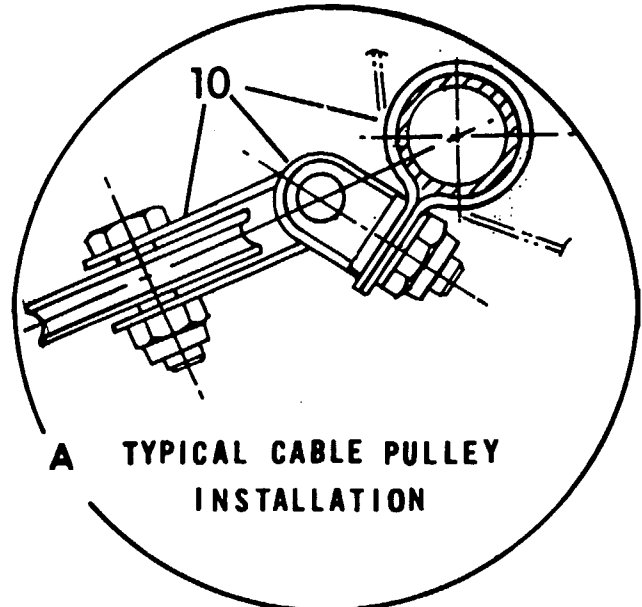
KEY TO FIGURE 1.

REF. NO.	PART NAME AND ATTACHING HARDWARE	PART NUMBERS	
		CITABRIA LEAF	CITABRIA OLEO
1-2	Strut - Forward L/R		69649
	Bolt - Upper		AN25-26A
	Bolt - Lower		AN25-26A
	Washer		AN960PD516
	Nut		AN364-524
3-4	Strut - Diagonal L/R		62650
	Bolt - Upper		AN25-26A
	Bolt - Lower		AN25-26A
	Washer		AN960PD516
	Nut		AN364-524
5-6	Strut - Aft L/R		62651
	Bolt - Upper		AN25-26A
	Bolt - Lower		AN25-26A
	Washer		AN960PD516
	Nut		AN364-524
7	Tie Rod Assy. - Forward		3392-4700
	Wirepull Fwd. Float L/R	88-C-708-1.7-29	88-C-708-5.2-26
	Spacer		88-C-710
	Bolt		AN6-26A
	Washer		AN960PD616
	Nut		AN365-624
	Wirepull Fwd. Fus. L/R	62633	68704
	Bolt	Existing	68703
	Washer	Champion	AN960PD616
	Nut	Hardware	AN365-624
8	Tie Rod Assy. - Aft		3392-4700
	Wirepull Aft Float L/R		88-C-708-2.5-26
	Spacer		88-C-710
	Bolt		AN6-26A
	Washer		AN960PD616
	Nut		AN365-624
	Wirepull Aft. Fus. L/R		62635-1L/-2R
	Bolt		AN4-16A
	Washer		AN960PD416
	Nut		AN365-428
9-10	Clamp		62636
	Spreader Assy. - Forward /Aft		89-C-703
	Tube - Spreader		89-C-703-1
	Fitting - Spreader End		88-C-704
	Bolt		AN6DD24A
	Washer		AN960PD616
	Nut		AN315D6R
Plate - Spreader End		88-C-705	

TABLE 1. EDO ATTACHMENT GEAR (CONFIGURATION 'B')
 FOR CHAMPION CITABRIA LEAF & OLEO GEAR AIRPLANES ON MCD. 089/089A-2000 FLOATS
 (Installation Assembly Model 089/089A31 & 32)

KEY TO FIGURE 1.

REF. NO.	PART NAME AND ATTACHING HARDWARE	PART NUMBERS		
		CITABRIA LEAF	CITABRIA OLEO	
11	Eyebolt - Spreader End		88-C-706	
	Washer		AN960PD616	
	Nut		AN365-624	
	Tie Rod Assy. - Spreader		3393-8700	
	Wirepull - Spreader		88-C-708-3.8-42	
	Spacer		88-C-710	
	Bolt		AN6-24A	
	Washer		AN960PD616	
	Nut		AN365-624	
	12-13	Float Deck Attach. Forward L/R		
		Fitting - Forward Float Swivel		62628
Bolt			AN6-34A	
Washer			AN960PD616	
14-15	Nut		AN365-624	
	Float Deck Attach. Aft L/R			
	Fitting - Aft Float Swivel		62630-1R/-2L	
	Fitting - Diagonal Float Swivel		62629-1	
	Bolt		AN6-42A	
16-17	Washer		AN960PD616	
	Nut		AN365-624	
	Fuselage Attachment-Forward L/R			
	Fitting - Fwd. Fuselage Attach. L/R	62631		
	Fitting - Fwd. Fuselage Swivel L/R	62632	68701-1L/-2R	
	Bolt	AN5-33A	68703	
	Washer	AN960PD516	AN960PD616	
	Washer (Shim)		AN960PD616	
	Nut	AN365-524	AN365-624	
	Drag Tube (Long)		68702-1	
Drag Tube (Short)		68702-2		
18-19	Fuselage Attachment Aft L/R			
	Fitting Aft Fuselage L/R		62634	
	Strap		62637	
	Bolt		AN4-11A	
	Nut		AN365-428	
	Washer		AN960PD416	



FWD ←

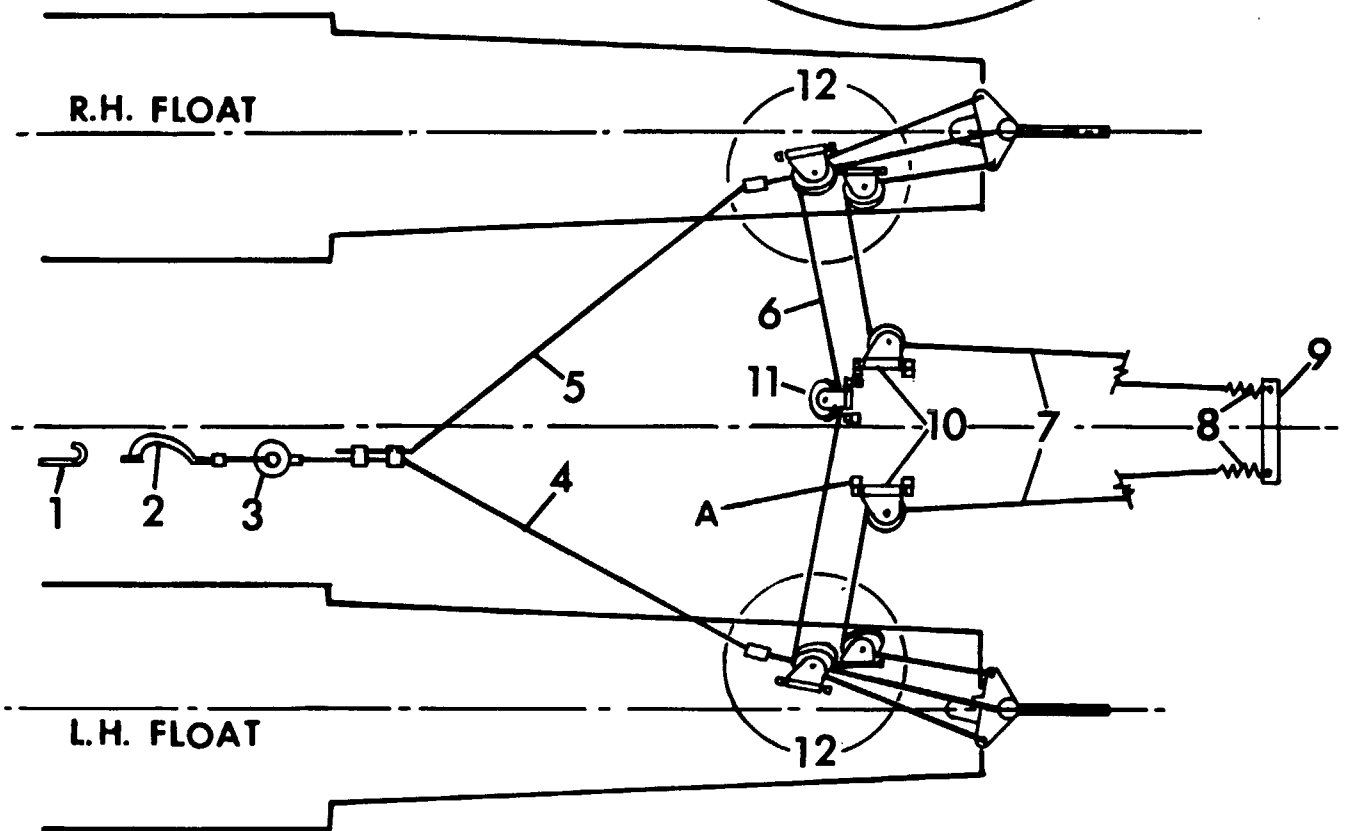


Figure #2
 EDO WATER RUDDER CONTROLS
 (Schematic)

(CONFIGURATION "B")

TABLE 1. EDO ATTACHMENT GEAR (CONFIGURATION "B")
 FOR CHAMPION CITABRIA LEAF & OLEO GEAR AIRPLANES ON MCD. 089/089A-20CG FLOATS
 (Installation Assembly Model 089/089A31 & 32)

KEY TO FIGURE 1.

REF. NO.	PART NAME AND ATTACHING HARDWARE	PART NUMBERS		
		CITABRIA LEAF	CITABRIA OLEO	
11	Eyebolt - Spreader End		88-C-706	
	Washer		AN960PD616	
	Nut		AN365-624	
	Tie Rod Assy. - Spreader		3393-8700	
	Wirepull - Spreader		88-C-708-3.8-42	
	Spacer		88-C-710	
	Bolt		AN6-24A	
	Washer		AN960PD616	
	Nut		AN365-624	
	12-13	Float Deck Attach. Forward L/R		
		Fitting - Forward Float Swivel		62628
Bolt			AN6-34A	
Washer			AN960PD616	
14-15	Float Deck Attach. Aft L/R			
	Fitting - Aft Float Swivel		62630-1R/-2L	
	Fitting - Diagonal Float Swivel		62629-1	
	Bolt		AN6-42A	
	Washer		AN960PD616	
16-17	Nut		AN365-624	
	Fuselage Attachment-Forward L/R			
	Fitting - Fwd. Fuselage Attach. L/R	62631		
	Fitting - Fwd. Fuselage Swivel L/R	62632	68701-1L/-2R	
	Bolt	AN5-33A	68703	
	Washer	AN960PD516	AN960PD616	
	Washer (Shim)		AN960PD616	
	Nut	AN365-524	AN365-624	
	Drag Tube (Long)		68702-1	
	Drag Tube (Short)		68702-2	
18-19	Fuselage Attachment Aft L/R			
	Fitting Aft Fuselage L/R		62634	
	Strap		62637	
	Bolt		AN4-11A	
	Nut		AN365-428	
	Washer		AN960PD416	

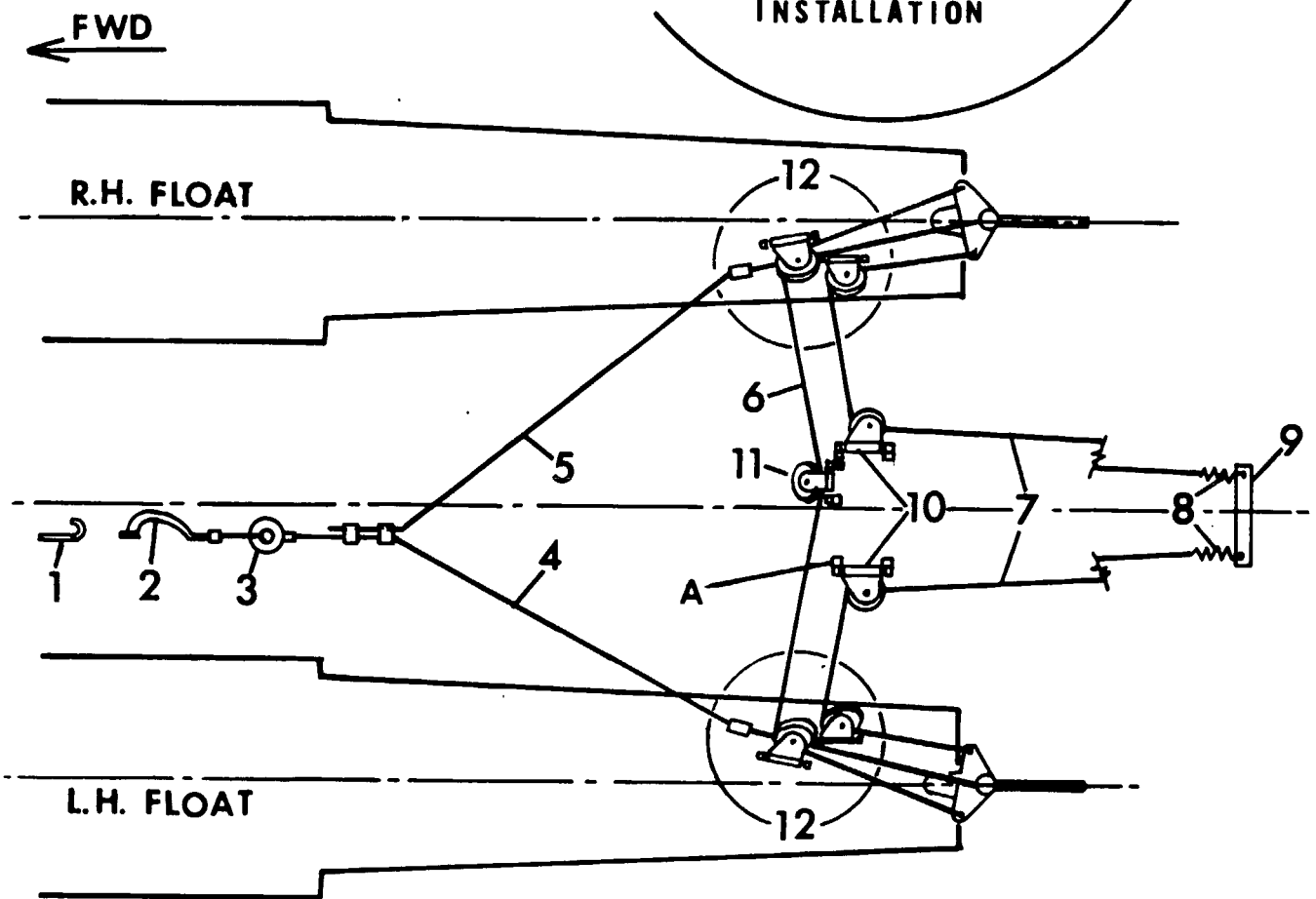
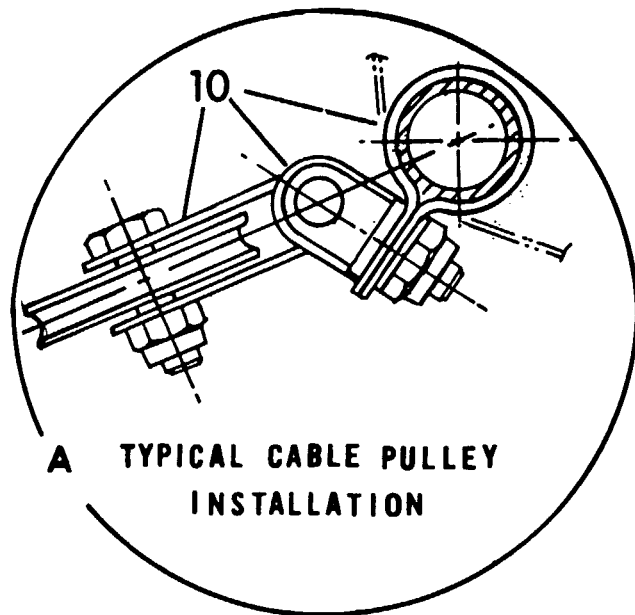


Figure #2
 EDO WATER RUDDER CONTROLS
 (Schematic)

(CONFIGURATION "B")

TABLE 2. EDO WATER RUDDER CONTROLS (CONFIGURATION "B")
 FOR CHAMPION CITABRIA LEAF & OLEO GEAR AIRPLANES ON MOD. 089/089A-2000 FLOATS
 (Installation Assembly Model 089/089A31 & 32)

KEY TO FIGURE 2.

REF. NO.	PART NAME AND ATTACHING HARDWARE	PART NUMBERS Figure in () Indicates Quantity per Installation
1	Hook - Retracting Cable Handle Screw, Tube Attachment Screw, Chain Attachment Nut	47954 (1) AN504-6-8 (2) AN526-632-8 (1) AN365-632 (1)
2	Handle, Retract Screw Chain Attachment	0367-1 (1) AN504-6-8 (1)
3	Fairlead Tube Assy. Screw, Floor Attachment Nut Washer (Under Nut) Washer (Under Floor)	62753 (1) AN526-1032-12 (3) AN365-1032 (3) AN960PD10 (3) AN970-3 (3)
4	Cable Assy. - Retract (Long) Nicro Press Sleeve	3340-189-3355 (1) 28-2-G (3)
5	Cable Assy. - Retract (Short)	3340-125-3355 (1)
6	Cable Assy. - Interfloat	3343-150-3353 (1)
7	Cable Assy. - Rudder Control	3343-162-3351 (2)
8	Spring	D-376 (2)
9	Extension, Rudder Horn Bolt Washer Nut	32682 (1) AN3-7A (2) AN960PD10 (4) AN365-1032 (2)
10	Pulley Bracket Assy. (Fuselage) Consisting Of Pulley Bracket Sub-Assembly Pin, Flat Head Pin, Cotter Eyebolt Washer Nut Clamp, Tube	60-W-911 (2) 60-W-911-1 (2) AN394-73 (2) AN381-2-8 (2) 00-W-805 (4) AN960PD416 (4) AN365-428 (4) 2258-6 (4)
11	Pulley Bracket Assy. (Interfloat) (For Breakdown See Item #10)	60-W-911 (1)

TABLE 2. EDO WATER RUDDER CONTROLS (CONFIGURATION "B")
 FOR CHAMPION CITABRIA LEAF & OLEO GEAR AIRPLANES ON MOD. 089/089A-2000 FLOATS
 (Installation Assembly Models 089/089A31 & 32)

KEY TO FIGURE 2.

REF. NO.	PART NAME AND ATTACHING HARDWARE	PART NUMBERS Figure in () Indicates Quantity per Installation
12	Deck Hardware, Water Rudder Control Consisting Of Pulley Bracket Assy. (For Breakdown See Item #10) Spacer (Inside Float on Eyebolt) Fairlead Assy. Consisting Of Fairlead Bracket Spacer, Fairlead Screw Washer Nut	89-Ws-505 (2) 60-W-911 (4) 92-Ws-506-1 (2) 68-W-654- (2) 0494 (4) 68-W-654-1 (2) 2712 (2) AN526-1032-18 (2) AN960PD10 (2) AN365-1032 (2)