

Figure #1  
EDO ATTACHMENT GEAR

(CONFIGURATION "B")

TABLE 1. EDO ATTACHMENT GEAR (CONFIGURATION "B")  
 FOR PIPER PA-12 & PIPER PA-20/22 AIRPLANES ON MOD. 089/089A-2000 FLOATS  
 (Installation Assembly Models 089/089A21 & 24)

KEY TO FIGURE 1.

REF. NO.	PART NAME AND ATTACHING HARDWARE	PART NUMBERS	
		PIPER PA-12	PIPER PA-20/22
1-2	Strut - Forward L/R Bolt - Upper Bolt - Lower Washer Nut	89-S-181	16271 AN6-16A AN6-16A AN960PD616 AN365-624
3-4	Strut - Diagonal L/R Bolt - Upper Bolt - Lower Washer Nut	89-S-144 AN5-15A AN5-15A	16273 AN5-14A AN5-14A AN960PD516 AN365-524
5-6	Strut - Aft L/R Bolt - Upper Bolt - Lower Washer Nut	89-S-182 AN5-15A AN5-15A	16275 AN5-14A AN5-14A AN960PD516 AN365-524
7	Tie Rod Assy. - Forward Wirepull Forward Float L/R Spacer Bolt Washer Nut Wirepull Forward Fuselage L/R Bolt Washer Nut Spacer (Under Bolt Head)	88-C-708-1.5-24      88-C-708-2.5-20 AN6-23A  88-C-710	88-C-708-3.4-26 88-C-710 AN6-26A AN960PD616 AN365-624 16279 AN6-33A AN960PD616 AN365-624 3392-4975
8	Tie Rod Assy. - Aft Wirepull Aft Float L/R Spacer Bolt Washer Nut Wirepull Aft Fuselage L/R	3394-4625 88-C-709-1.3-24	3394-4800 88-C-709-1.8-25 88-C-710 AN6-26A AN960PD616 AN365-624
9-10	Spreader Assy. - Forward/Aft Tube - Spreader Fitting - Spreader End Bolt Washer Nut Plate - Spreader End	Part of Aft Fus. Fitting (See Ref. No. 18-19)	89-C-703 89-C-703-1 88-C-704 AN6DD24A AN960PD616 AN315D6R 88-C-705

TABLE 1. EDO ATTACHMENT GEAR  
 FOR PA-12 WITH PA-18 LAND PLANE GEAR  
 (Installation Assembly Model 089/089A21)

KEY TO FIGURE 1 ITEM 16

REF. NO.	PART NAME AND ATTACHING HARDWARE	PART NUMBERS	
		REMOVE FROM PA-12	ADD FOR PA-12
16	Fuselage Attachment - Fwd L/R		
	Fitting - Fwd Fuse Attach LH	89-S-186 (Qty 1)	69471-1L (Qty 1)
	Fitting - Fwd Fuse Attach RH	89-S-186 (Qty 1)	69471-2R (Qty 1)
	Fitting - Fwd Fuse Swivel	89-S-185 (Qty 2)	
	Eyebolt - Diagonal Swivel	60-S-935 (Qty 2)	
	Wirepull		14393 (Qty 2)
	Bolt		AN6-34A (Qty 2)
	Bolt		AN5-25A (Qty 2)

TABLE 1. EDO ATTACHMENT GEAR (CONFIGURATION "B")  
 FOR PIPER PA-12 & PIPER PA-20/22 AIRPLANES ON MOD. 089/089A-2000 FLOATS  
 (Installation Assembly Models 089/089A21 & 24)

KEY TO FIGURE 1.

REF. NO.	PART NAME AND ATTACHING HARDWARE	PART NUMBERS	
		PIPER PA-12	PIPER PA-20/22
11	Eyebolt - Spreader End Washer Nut Tie Rod Assy. - Spreader Wirepull - Spreader Spacer Bolt Washer Nut		88-C-706 AN960PD616 AN365-624 3393-8700 88-C-708-3.8-42 88-C-710 AN6-24A AN960PD616 AN365-624
12-13	Float Deck Attachment Forward L/R Fitting - Forward Float Swivel Bolt Washer Nut	89-S-183	16280 AN6-33A AN960PD616 AN365-624
14-15	Float Deck Attachment Aft L/R Fitting - Aft Float Swivel Bolt Washer Nut	89-S-184 AN6-33A	16281L/82R AN6-37A AN960PD616 AN365-624
16-17	Fuselage Attach. - Forward L/R Fitting - Fwd. Fuselage Attach. L/R Fitting - Fwd. Fuselage Swivel L/R Eyebolt - Diagonal Swivel Bolt Washer Nut Cover Screw Adapter Fitting Instl. Kit	89-S-186 89-S-185 60-S-935  89-S-205 AN530-8-8	16277L/78R  AN6-33A AN960PD616 AN365-624  16294 (PA-22 ONLY)
18-19	Fuselage Attachment Aft L/R Fitting Aft Fuselage L/R Spacer Angle Bolt Saddle Plate Washer Nut "U" Bolt Saddle Plate Washer Nut	89-S-187-1 89-S-187-6 89-S-190 89-S-189  89-S-191 89-S-188 AN960PD416 AN365-428	16283L/84R  05994 05990 AN960PD416 AN365-428

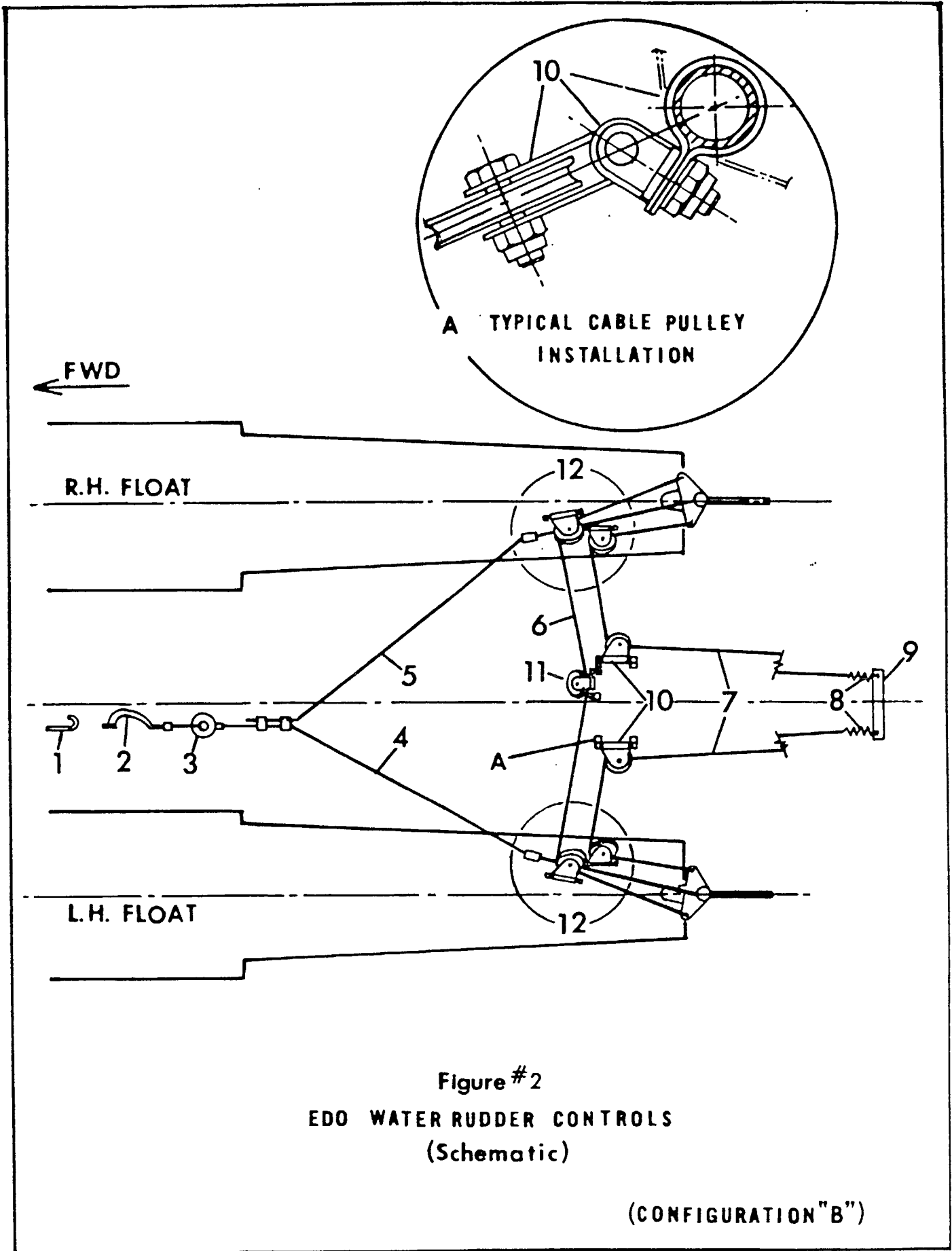


TABLE 2. EDO WATER RUDDER CONTROLS (CONFIGURATION "B")  
 FOR PIPER PA-12 & PA-20/22 ON MODEL 089/089A-2000 FLOATS  
 (Installation Assembly Model 089/089A21 & 24)

KEY TO FIGURE 2.

REF. NO.	PART NAME AND ATTACHING HARDWARE	PART NUMBERS	
		Figure in ( ) Indicates Quantity per Installation Piper PA-12	Figure in ( ) Indicates Quantity per Installation Piper PA-20/22
1	Hook - Retracting Cable Handle	89-Ws-501-4 (1)	06007 (1)
2	Handle, Retract		0367 -1 (1)
3	Fairlead Tube Assy. Screw Washer Nut		89-Ws-501-3 (1) AN515-8-12 (2) AN960D8 (2) AN365-832 (2)
4	Cable Assy. - Retract (Long)		3340-206-3355 (1)
5	Cable Assy. - Retract (Short)		3340-206-3355 (1)
6	Cable Assy. - Interfloat		3343-192-3353 (1)
7	Cable Assy. - Rudder Control		3343-168-3351 (2)
8	Spring		D-376 (2)
9	Extension, Rudder Horn Bolt Washer Nut		92-Ws-508 (1) AN3-7A (2) AN960D10 (4) AN365-1032 (2)
10	Pulley Bracket Assy. (Fuselage) Consisting Of Pulley Bracket Sub-Assembly Pin, Flat Head Pin, Cotter Eyebolt Washer Nut Clamp, Tube		60-W-911 (2) 60-W-911-1 (2) AN394-73 (2) AN381-2-8 (2) 00-W-850 (4) AN960PD416 (4) AN365-428 (4) 2258 -6 (4)
11	Pulley Bracket Assy. (Interfloat) Consisting Of Pulley Bracket Sub-Assembly Pin, Flat Head Pin, Cotter Eyebolt Washer Nut Clamp, Tube		2256 (1) 2256-1 (1) AN394-41 (1) AN381-2-8 (1) 00-W-850 (2) AN960PD416 (2) AN365-428 (2) 2258-4 (2)

TABLE 2. EDO WATER RUDDER CONTROLS (CONFIGURATION "B")  
 FOR PIPER PA-12 & PA-20/22 ON MODEL 089/089A-2000 FLOATS  
 (Installation Assembly Model 089/089A21 & 24)

KEY TO FIGURE 2.

REF. NO.	PART NAME AND ATTACHING HARDWARE	PART NUMBERS	
		Piper PA-12	Piper PA-20/22
12	Deck Hardware, Water Rudder Control Consisting OF Pulley Bracket Assy. (For Breakdown See Item #10) Spacer (Inside Float on Eyebolt) Fairlead Assy. Consisting OF Fairlead Bracket Spacer, Fairlead Screw Washer Nut	89-Ws-505 (2) 60-W-911 (4) 92-Ws-506-1 (2) 68-W-654 (2) 0494 (4) 68-W-654-1 (2) 2712 (2) AN526-1032-18 (2) AN960PD10 (2) AN365-1032 (2)	Figure in ( ) Indicates Quantity per Installation