

Figure #1  
EDO ATTACHMENT GEAR

(CONFIGURATION "B")

TABLE 1. EDO ATTACHMENT GEAR (CONFIGURATION "B")  
 FOR PIPER PA 18 SERIES AIRPLANES ON MOD. 089/089A-2000 FLOATS  
 (Installation Assembly Models 089/089A23)

KEY TO FIGURE 1

REF. NO.	PART NAME AND ATTACHING HARDWARE	PART NUMBERS
1-2	Strut - Forward L/R Bolt - Upper Bolt - Lower Washer Nut	14397 AN6-17A AN6-17A AN960PD616 AN365-624
3-4	Strut - Diagonal L/R Bolt - Upper Bolt - Lower Washer Nut	14399 AN5-15A AN5-15A AN960PD516 AN365-524
5-6	Strut - Aft L/R Bolt - Upper Bolt - Lower Washer Nut	14401 AN5-14A AN5-14A AN960PD516 AN365-524
7	Tie Rod Assy. - Forward Wirepull Forward Float L/R Spacer Bolt Washer Nut Wirepull Forward Fuselage L/R Bolt Washer (Under Bolt Head) Washer (Under Nut) Nut Bushing (On PA18 & 18A150 Only) Bushing (Not on PA18 & 18A150)	3394-4800 88-C-709-3.5-27 88-C-710 AN6-26A AN960PD616 AN365-624 14393 AN4-25A AN960PD416 AN960-416 AN365-428 14412 14413
8	Tie Rod Assy. - Aft Wirepull Aft Float L/R Spacer Bolt Washer Nut Wirepull Aft Fuselage L/R	3394-4625 88-C-709-1.2-29 88-C-710 AN6-26A AN960PD616 AN365-624 Part of Aft Fus. Attachment Ftg. (See Ref. No. 18-19)
9-10	Spreader Assy. - Forward/Aft Tube - Spreader Fitting - Spreader End Bolt Washer Nut Plate - Spreader End	89-C-703 89-C-703-1 88-C-704 AN6DD24A AN960PD616 AN315D6R 88-C-705

INTENTIONALLY LEFT BLANK

TABLE 1. EDO ATTACHMENT GEAR (CONFIGURATION "B")  
 FOR PIPER PA 18 SERIES AIRPLANES ON MOD. 089/089A-2000 FLOATS  
 (Installation Assembly Models 089/089A23)

KEY TO FIGURE 1

REF. NO.	PART NAME AND ATTACHING HARDWARE	Part Numbers
11	Eyebolt - Spreader End Washer Nut Tie Rod Assy. - Spreader Wirepull - Spreader Spacer Bolt Washer Nut	88-C-706 AN960PD616 AN365-624 3393-8700 88-C-708-3.8-42 88-C-710 AN6-24A AN960PD616 AN365-624
12-13	Float Deck Attach. Forward L/R Fitting - Forward Float Swivel Bolt Washer Nut	14394 AN6-33A AN960PD616 AN365-624
14-15	Float Deck Attach. Aft L/R Fitting - Aft Float Swivel Bolt Washer Nut	14395L/14396R AN6-34A AN960PD616 AN365-624
16-17	Fuselage Attachment - Forward L/R Fitting - Fwd. Fuselage Swivel L/R Bolt Washer Nut	14391L/14392R AN6-34A AN960PD616 AN365-624
18-19	Fuselage Attachment Aft L/R Fitting Aft Fuselage L/R Angle Bolt Saddle Plate Washer Nut "U" Bolt Washer Nut	14403 14408 05990 AN960PD416 AN365-428 14409 AN960PD10 AN365-1032

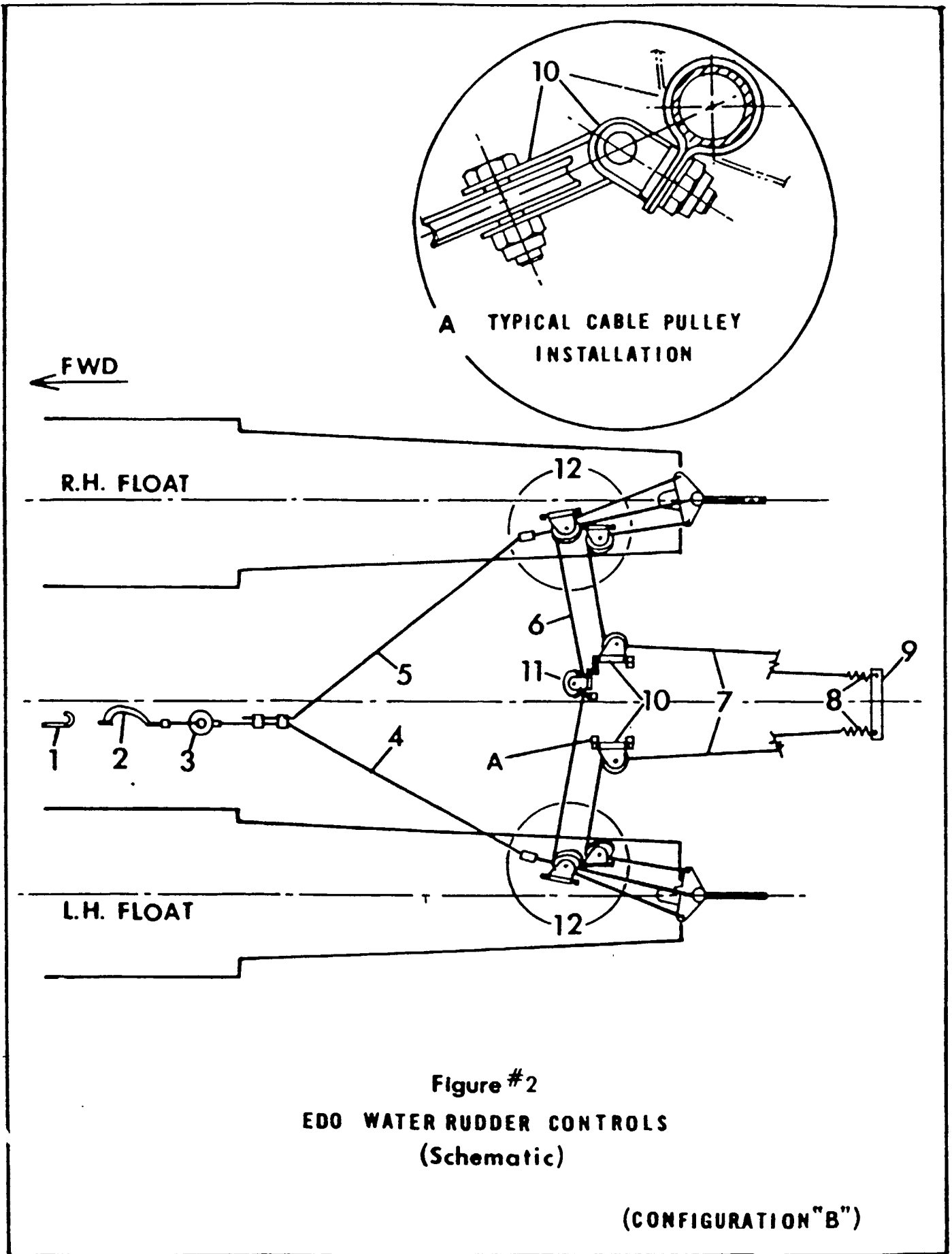


TABLE 2. EDO WATER RUDDER CONTROLS (CONFIGURATION "B")  
 FOR PIPER PA 18 SERIES AIRPLANES ON MOD. 089/089A-2000 FLOATS  
 (Installation Assembly Models 089/089A23)

KEY TO FIGURE 2.

REF. NO.	PART NAME AND ATTACHING HARDWARE	PART NUMBERS Figure in ( ) Indicates Quantity per Installation
1	Hook - Retracting Cable Handle Screw Washer Nut	60-W-043 (1) AN526-1032-12 (1) AN960-10 (1) AN365-1032 (1)
2	Handle, Retract Screw, Chain Attachment	0367 (1) AN504-6-8 (1)
3	Fairlead Tube Assy. Screw Floorboard Attachment Washer Nut	92-Ws-509 (1) AN525-832-12 (3) AN960-8 (3) AN365-832 (3)
4	Cable Assy. - Retract (Long) Micro Press Sleeve	3340-216-3355 (1) 28-2-G
5	Cable Assy. - Retract (Short)	3340-216-3355 (1)
6	Cable Assy. - Interfloat	3343-192-3353 (1)
7	Cable Assy. - Rudder Control	3340-224-3350 (2)
8	Spring	D-376 (2)
9	Extension, Rudder Horn Bolt Washer Nut	92-Ws-508 (1) AN4-6A (2) AN960-D416 (2) AN365-428 (2)
10	<ul style="list-style-type: none"> <li>Pulley Bracket Assy. (Fuselage)</li> <li style="padding-left: 20px;">Consisting Of</li> <li style="padding-left: 40px;">Pulley Bracket Sub-Assembly</li> <li style="padding-left: 40px;">Pin, Flat Head</li> <li style="padding-left: 40px;">Pin, Cotter</li> <li style="padding-left: 40px;">Eyebolt</li> <li style="padding-left: 40px;">Washer</li> <li style="padding-left: 40px;">Nut</li> <li>Clamp, Tube</li> </ul>	<ul style="list-style-type: none"> <li>60-W-911 (2)</li> <li>60-W-911-1 (2)</li> <li>AN394-73 (2)</li> <li>AN381-2-8 (2)</li> <li>00-W-850 (4)</li> <li>AN960PD416 (4)</li> <li>AN365-428 (4)</li> <li>2258-6 (4)</li> </ul>

INTENTIONALLY LEFT BLANK

TABLE 2. EDO WATER RUDDER CONTROLS (CONFIGURATION "B")  
 FOR PIPER PA 18 SERIES AIRPLANES ON MOD. 089/089A-2000 FLOATS  
 (Installation Assembly Models 089/089A23)

KEY TO FIGURE 2.

REF. NO.	PART NAME AND ATTACHING HARDWARE	PART NUMBERS Figure in ( ) Indicates Quantity per Installation
11	Pulley Bracket Assy. (Interfloat) Consisting Of Pulley Bracket Sub-Assembly Pin - Flat Head Pin - Cotter Eyebolt Washer Nut Clamp, Tube	2256 (1)  2256-1 (1) AN394-41 (1) AN381-2-8 (1) 00-W-850 (2) AN960PD416 (2) AN365-428 (2) 2258-4 (2)
12	Deck Hardware, Water Rudder Control Consisting Of Pulley Bracket Assy. (For Breakdown See Item #10) Spacer (Inside Float on Eyebolt) Fairlead Assy. Consisting Of Fairlead Bracket Spacer, Fairlead Screw Washer Nut	89-Ws-505 (2)  60-W-911 (4)  92-Ws-506-1 (2) 68-W-654 (2)  0494 (4) 68-W-654-1 (2) 2712 (2) AN526-1032-18 (2) AN960PD10 (2) AN365-1032 (2)